

RESOLUTION NO. 2026-

A RESOLUTION OF THE VILLAGE OF PINECREST, FLORIDA, AUTHORIZING THE VILLAGE MANAGER TO ENTER INTO A CONTRACT WITH CHOICE ENGINEERING CONSULTANTS, INC. FOR THE DESIGN OF SW 120 ST AND SW 77 AVE INTERSECTION (TRUE NORTH CLASSICAL ACADEMY – BET SHIRA CAMPUS PROJECT); PROVIDING FOR AN EFFECTIVE DATE.

WHEREAS, the Village Council adopted Resolution 2025-35 authorizing the Village Manager to “piggyback” on an existing agreement and enter into an agreement with Choice Engineering Consultants for Traffic Operation Studies; and

WHEREAS, pursuant to Section 2-287 of the Code of Ordinances, the Village Manager is authorized to execute contracts, as entered into by other governmental authorities, provided that the governmental authority has followed a competitive bidding procedure leading to the award of the bid or contract in question; and

WHEREAS, the Village Manager wishes to enter into a contract with Choice Engineering Consultants, Inc. for the design of SW 120 ST and SW 77 Ave Intersection Improvements;

NOW, THEREFORE, BE IT RESOLVED BY THE VILLAGE COUNCIL OF PINECREST, FLORIDA, AS FOLLOWS:

Section 1. That the Village Council hereby authorizes the Village Manager to enter into an agreement with Choice Engineering Consultants, Inc. FOR the design of SW 120 ST and SW 77 Ave Intersection Improvements in amount not to exceed the funding available in the approved annual budget.

Section 2. This resolution shall take effect immediately upon adoption.

PASSED AND ADOPTED this 10th day of March, 2026.

Joseph M. Corradino, Mayor

Attest:

Priscilla Torres, MMC
Village Clerk

Approved as to Form and Legal Sufficiency:

Mitchell Bierman
Village Attorney



PINECREST
MEMORANDUM

Public Works Department

DATE: March 3, 2026

TO: Yocelyn Galiano, ICMA-CM, LEED GA

FROM: David J. Mendez, P.E., Public Works Director

RE: Improvements to 77 Ave and 120 Street Intersection (Bet Shira Project)

The Public Works Department is requesting approval to execute a professional services agreement with Choice Engineering Consultants, Inc. for the preparation of construction documents for corridor improvements along SW 120 Street and SW 77 Avenue, adjacent to the True North Classical Academy – Bet Shira Campus.

The scope of services includes roadway design and improvements at the SW 77 Avenue and SW 120 Street intersection.

Choice Engineering Consultants, Inc. was procured through the Village's piggyback of the State of Florida Department of Transportation Contract, a competitively awarded professional services agreement executed on September 27, 2022, and valid through September 27, 2027. The Village negotiated the scope and fee with the consultant, including a reduction in the proposed fee to ensure alignment with comparable projects.

I recommend approval to execute the professional services agreement with Choice Engineering Consultants, Inc. in the amount of \$306,752.83.

Engineering Services
Preparation of Construction Documents

Scope of Services, Schedule, and Fee

For

SW 120 St and SW 77 Avenue Corridor Improvements

From West of SW 77 Ave to East of SW 74 Ave

True North Classical Academy

In the Village of Pinecrest, Miami-Dade County, FL



PINECREST

By:

Choice Engineering Consultants, Inc.

12855 SW 132 Street, Suite 200

Miami, Florida 33186

1. PROJECT UNDERSTANDING

The Village of Pinecrest (The Village) has requested Development of Construction Plans for the proposed corridor modifications including the addition of two (2) new driveways along SW 120 Street and the inclusion of a right turn lane for school access. Improvements along SW 77 Avenue include turning lane extensions and intersection return modifications. Additionally, drainage improvements will be required as a result of the proposed roadway configurations as shown in the approved Traffic Impact Study dated 1/31/2025 (LANGAN EOR). The purpose of this effort is to prepare a complete set of construction plans for the new pedestrian crossing.

2. PROJECT DESCRIPTION

Choice will utilize the approved concept as a basis for the design unless otherwise directed by The Village.

General Recommended Improvements:

Roadway

- Mill and resurface the existing roadway pavement.
- Evaluate cross slope corrections.
- Widen (Center Widening) to provide eastbound right turn lane into North Classical Academy.
- Channelize the proposed school driveways.
- Reconstruct sidewalk as needed along both sides of SW 120 Street.
- Realign SW 120 St eastbound and westbound approaches to SW 77 Ave to accommodate new lane configurations adjacent to True North Classical Academy.
- Improve turning radius at the NE corner of SW 77 Ave.
- Widen and realign northbound and southbound approach of SW 77 Avenue to provide a northbound right turn lane.
- Adjust existing utility manholes and valves affected by milling and resurfacing and sidewalk reconstruction.
- Upgrade deficient pedestrian curb ramps and blended transitions and related components such as detectable warning surfaces, pavement markings, pedestrian crossing signs and plaques.

Drainage

- Analyze drainage impacts associated with the proposed widening.
- Provide closed drainage system as required to mitigate additional impervious areas.
- Regrade existing swales as necessary

Signing and Pavement Markings

- Provide high emphasis crosswalks at the signalized intersection and midblock crossing crosswalks. Refer to concept plans0.
- Upgrade all substandard ground-mounted signs to comply with the applicable editions of the Florida Greenbook, FDOT Standard Plans, the FDOT Traffic Engineering Manual (TEM), FDOT Design Manual (FDM), and the Manual on Uniform Traffic Control Devices (MUTCD).
- Replace and upgrade all pavement markings to meet the latest FDOT Standard Plans for Road Construction and FDOT Design Manual.

Signalization

- Replace loops affected by milling and resurfacing operations.
- Provide new countdown pedestrian signals and install ADA-compliant pedestrian pushbuttons and detector signs.
- Replace signal pull boxes impacted by the reconstruction of pedestrian curb ramps.
- Replace all missing and/or non-ADA compliant signs within the project limits.
- Coordinate with MDTSS – The Village will not provide a new Electrical Service Disconnect or Meter.

Lighting (N/A)

- There are no lighting improvements as part of this project.

Landscape (N/A)

- There are no landscape improvements as part of this project.

The design will include a roadway analysis to balance the required widening for the introduction of an eastbound right turn lane into the True North Classical Academy, buffered sidewalk and inclusion of auxiliary lanes, drainage analysis to mitigate the additional impervious areas and drainage concerns, new signing and pavement markings, including School Zone markings and signalization improvements at the intersection of SW 120 Street and SW 77 Ave. The design will account for roadway widening, construction of curb and gutter, sidewalk and curb ramp reconstruction, swale regrading, special emphasis markings, signing and pavement markings and signalization.

Design will follow the latest applicable state and local design standards and procedures, and final plans will be uploaded to the County site for final review and approval. Coordination will also be done with the Village's Parks and Recreation Department to ensure the proposed crosswalk provides proper access to the Red Road Linear Park and with the Transit Division of Miami-Dade for the relocation of the existing transit stop.

2.1 Project General and Roadway Activities

Public Involvement:

Support The Village in the production of exhibits and public meeting attendance.

Specifications Package Preparation:

As required by The Village.

Plan Type:

Roadway Plans

Typical Section:

2 Typical Sections

- SW 120 Street
- SW 77 Avenue
- 4 Typical Section Details

Pavement Designs:

- 2 Pavement Designs
 - Milling and Resurfacing
 - Widening

Cross Slope Correction:

Analyze existing cross slope along SW 120 St and along SW 77 Ave and correct substandard cross slopes as needed.

2.2 Drainage

Drainage System Type:

The project's existing drainage system consists of a combined closed system of storm drains and retention roadside swale areas. The proposed widening will require swale regrading and potentially the implementation of French drain cells and ditch bottom inlets at some locations to provide for retained runoff depletion. There are some locations with flat grades that do not drain well and will need to be further analyzed once the survey is obtained.

Coordination with The Village will be required to clean out inlets and repair damaged inlet tops through their maintenance contractor.

2.3 Utilities

Choice will conduct utility coordination efforts certifying that all necessary arrangements for utility work on this project have been made and will not conflict with the physical construction schedule.

Utility Contact Plans will be submitted to each Utility Agency Owner (UAO) to obtain official redlines to be reflected in the contract plans.

Expected Utilities:

- AT&T / Distribution
- Breezeline
- Comcast
- Crown Castle
- Florida City Gas
- Florida Gas Transmission
- FPL - Dade
- Lumen
- MCI / Verizon
- Miami-Dade County Water & Sewer
- Miami-Dade County IT Dept
- Verizon Wireless

2.4 Environmental Permits

Expected Permits: *To be determined*

Choice will support The Village in obtaining any environmental permits required due to the proposed improvements.

2.5 Signing and Pavement Markings

No Sign Structures are included in this project.

Signing and Pavement Marking Plans are required for this project along SW 120 St and along SW 77 Ave, within the project limits. Existing signs include ground-mounted signs within the sidewalk and swale area along the project corridor. There are also signs mounted on overhead mast-arms at the signalized intersection. Faded, damaged or substandard signs were observed within the project limits. Several signs were found within the swale area not meeting the standard placement per Index 700-101. There are missing signs or signs not placed at the correct location as per the FDOT Speed Zoning Manual. There are two School Zones with School Crossings (True North Classical Academy and Pаметto High School). Existing pavement markings are in fair condition, with faded striping as well as raised reflective pavement markers that are missing or with low reflectivity.

2.6 Signalization

One signalized intersection: SW 77 Ave and SW 120 Street.

The signal maintaining agency is Miami-Dade County. Miami-Dade County's preference is to provide actuation for all the vehicular lanes including the major street. Additionally, the existing service disconnect, is not metered and it is not The Village's intention to upgrade them. Choice will coordinate with Miami-Dade County to advise them of The Village's intent and project scope.

2.7 Lighting (N/A)

There is no street lighting within the project limits. There are no lighting improvements as part of this project.

2.8 Landscape (N/A)

There are no landscape improvements as part of this project. Tree removal will be coordinated with The Village and be part of clearing and grubbing.

2.9 Surveying, R/W Mapping and Subsurface Utility Engineering (SUE)

Surveying, R/W Mapping and SUE Services will be provided by our Subconsultant, Hadonne Corp.

2.10 Geotechnical

Geotechnical Services will be provided by our Subconsultant, Geosol.

2.11 Project Schedule

Within ten (10) days after the Notice-To-Proceed, and prior to beginning work, Choice will provide a detailed project activity/event schedule for The Village.

The proposed schedule will allow for a four (4) week review time for each phase submittal and any other submittals as appropriate.

Periodically, throughout the life of the contract, the project schedule and payout and fiscal progress curves will be reviewed and, with the approval of The Village, adjusted as necessary to incorporate changes in the Scope of Services and progress to date.

The approved schedule and schedule status report, along with progress and payout curves, will be submitted with a monthly progress report.

The schedule shall be submitted in an FDOT system-compatible format.

Anticipated Project Schedule

- Design Documents Submittal: **TBD**
- 60% Plans Submittal: **TBD**
- 90% Plans Submittal: **TBD**
- 100% Plans Submittal: **TBD**

3. FEE AND BILLING

The Village. The total lump sum to complete all items described in the scope of services above is **\$306,752.83**. Additional optional services, such as support in development of the bid package, and post-design services will be negotiated and billed separately as a Limiting Amount Fee under a separate Task Work Order. Fee will be invoiced upon each submittal of the plans and will be based on percentage plans completed.



CLOSURE

In addition to the matters set forth herein, our Agreement shall include and shall be subject to the Terms and Conditions presented in Attachment “A” and hereby incorporated herein. As used in the Terms and Conditions, the term “the Consultant” shall refer to Choice Engineering Consultants, Inc. and the term, “the Client” shall refer to The Village of Pinecrest. If you concur in the foregoing and wish to direct us to proceed with the services, please have authorized persons execute both copies of this Agreement in the spaces provided below, retain one copy and return the other to us for our files along with the retainer. Fees and times stated in this Agreement are valid for sixty (60) days after the date of this letter. We appreciate this opportunity to provide these services for you. Please contact us if you have any questions.

Sincerely,

CHOICE CONSULTING ENGINEERS, INC.

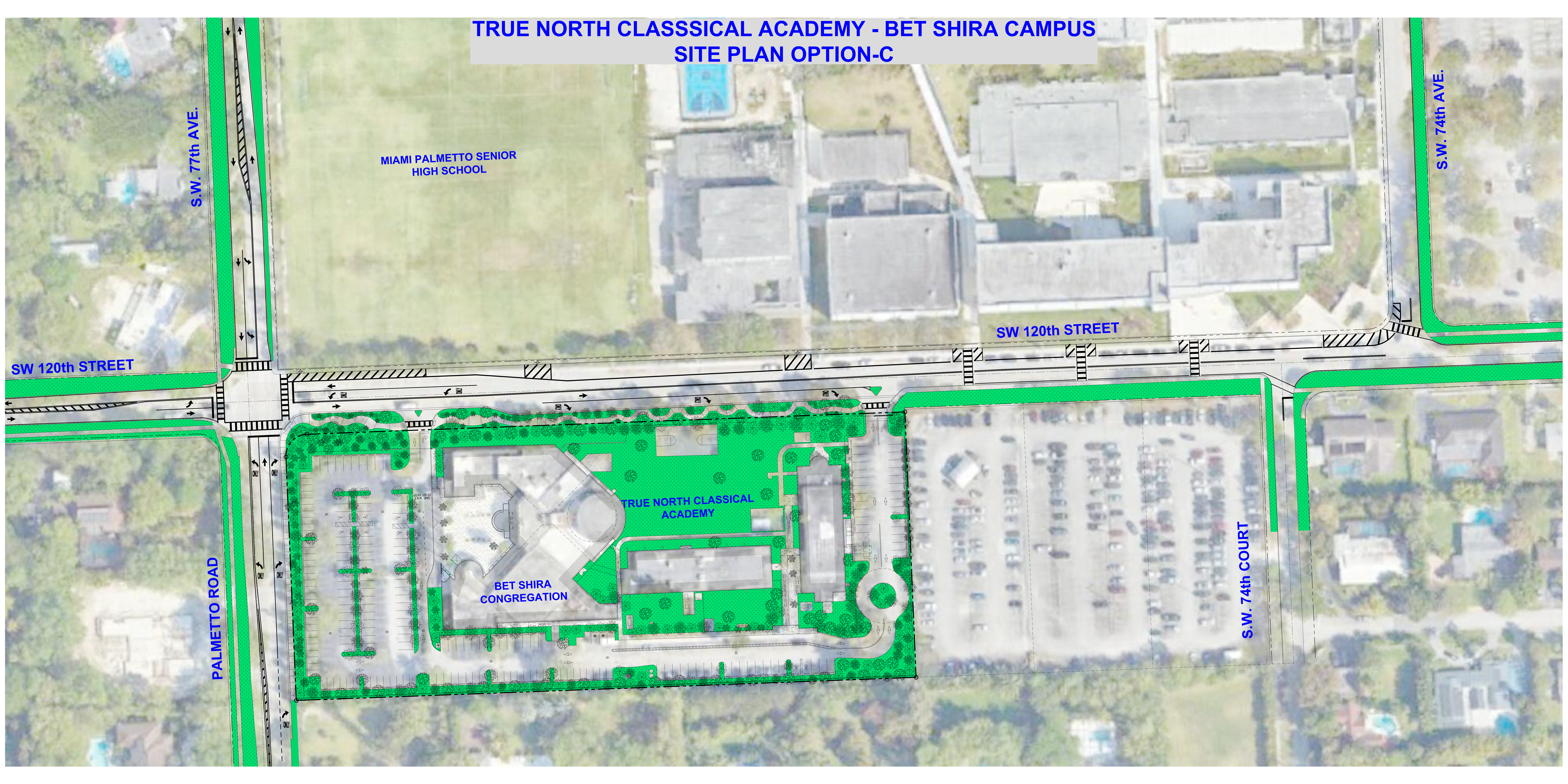
Rafael S. Aguilar, P.E.
Senior Project Manager
CF/file

Agreed on this 14th day of January 2026

Concurred by: _____

David J. Mendez
Director of Public Works

**TRUE NORTH CLASSICAL ACADEMY - BET SHIRA CAMPUS
SITE PLAN OPTION-C**



S.W. 77th AVE.

MIAMI PALMETTO SENIOR
HIGH SCHOOL

S.W. 74th AVE.

SW 120th STREET

SW 120th STREET

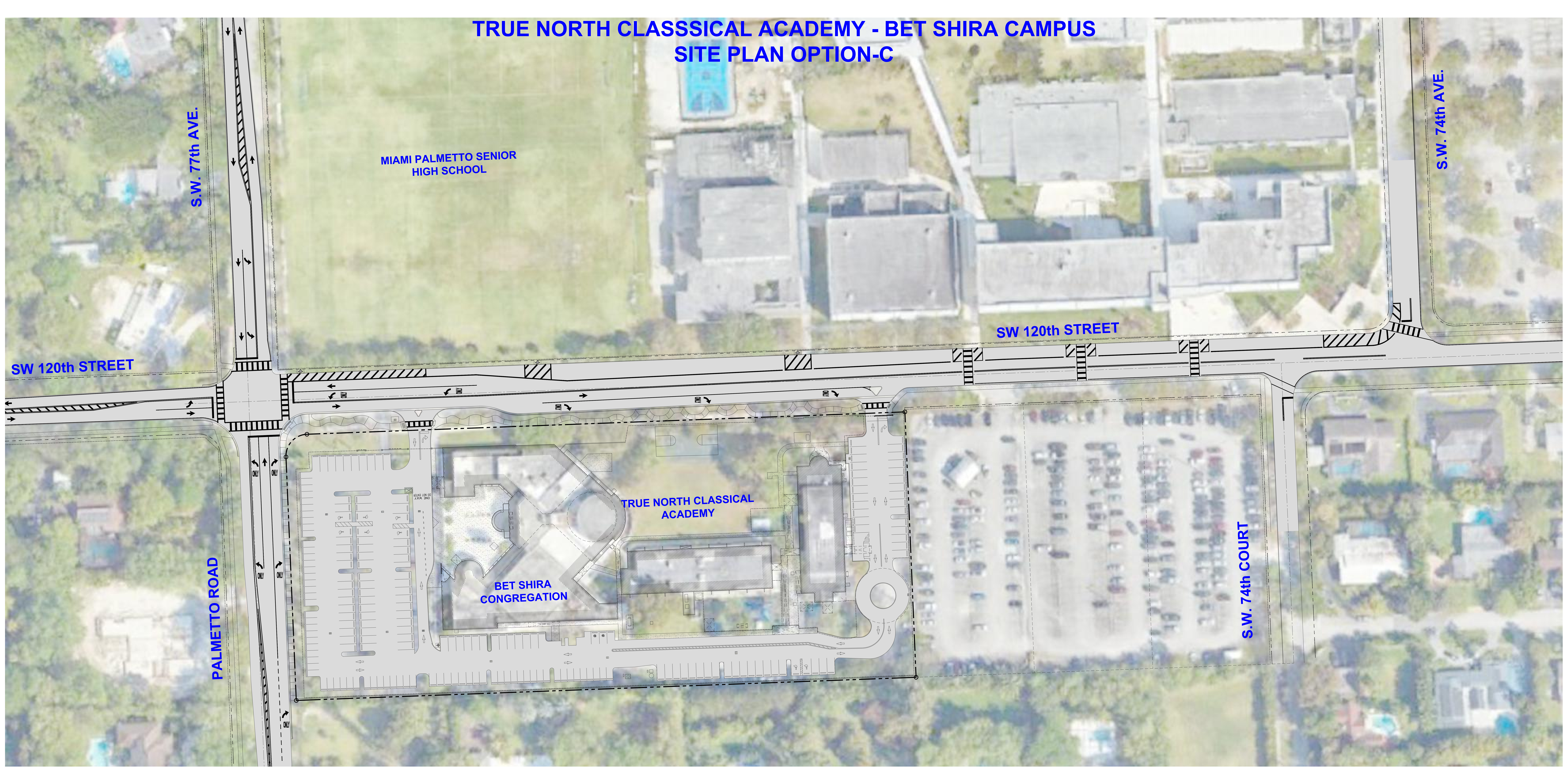
PALMETTO ROAD

TRUE NORTH CLASSICAL
ACADEMY

BET SHIRA
CONGREGATION

S.W. 74th COURT

**TRUE NORTH CLASSICAL ACADEMY - BET SHIRA CAMPUS
SITE PLAN OPTION-C**



S.W. 77th AVE.

MIAMI PALMETTO SENIOR
HIGH SCHOOL

S.W. 74th AVE.

SW 120th STREET

SW 120th STREET

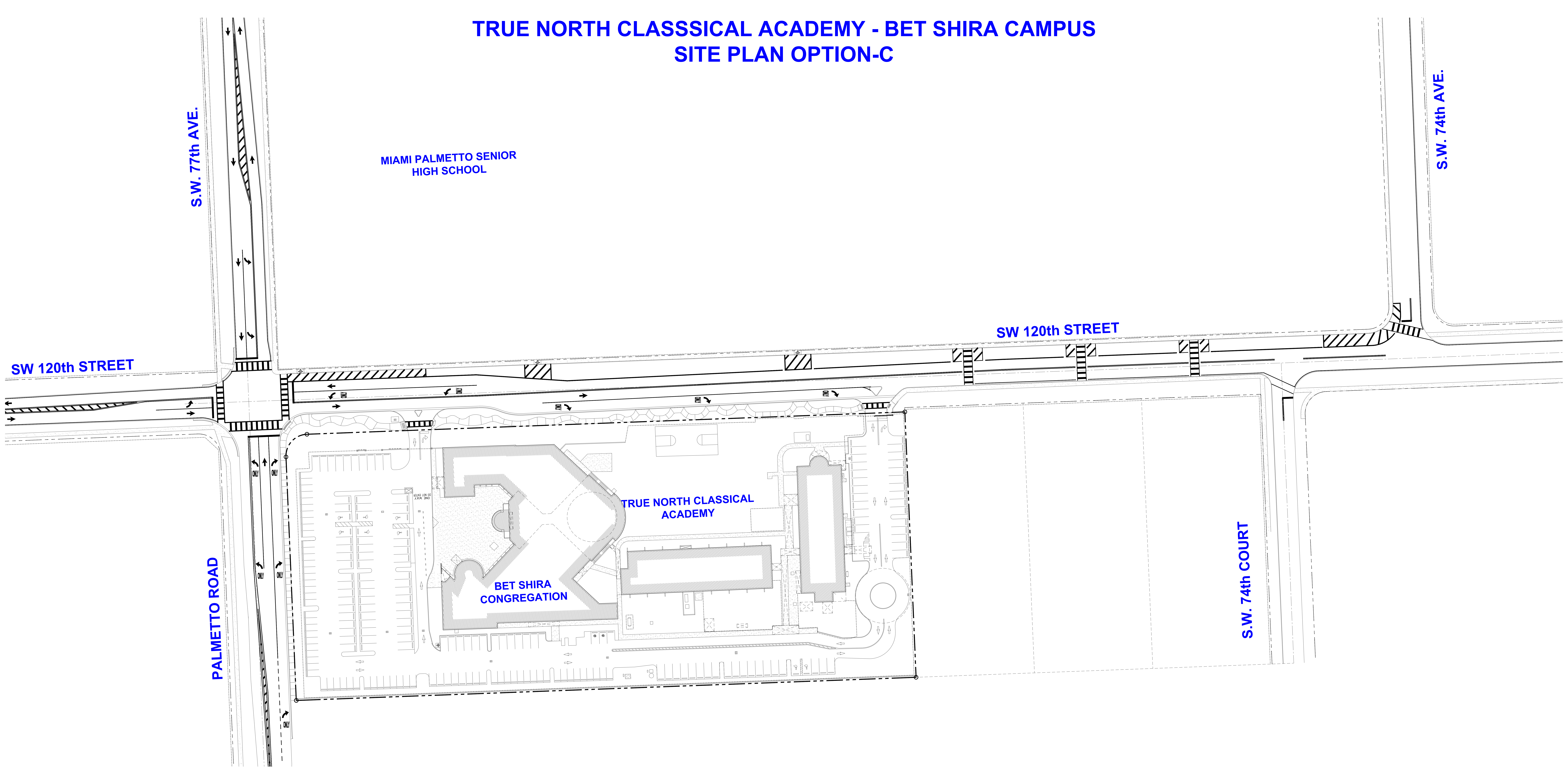
PALMETTO ROAD

TRUE NORTH CLASSICAL
ACADEMY

BET SHIRA
CONGREGATION

S.W. 74th COURT

TRUE NORTH CLASSICAL ACADEMY - BET SHIRA CAMPUS SITE PLAN OPTION-C



S.W. 77th AVE.

MIAMI PALMETTO SENIOR
HIGH SCHOOL

S.W. 74th AVE.

SW 120th STREET

SW 120th STREET

PALMETTO ROAD

TRUE NORTH CLASSICAL
ACADEMY

BET SHIRA
CONGREGATION

S.W. 74th COURT



No.	DATE	REVISION	BY
3	11.08.24	CRC ZONING COMMENTS	MS / IAF

DRAWN BY: APPROVED BY:
RL

DATE: SCALE:
2023 AS SHOWN

KEYPLAN

PERMIT SUBMITTAL

SEAL / SIGNATURE

ROLANDO LLANES,
AR - 0013160

This drawing is the property of CIVICA and is not to be reproduced or copied in whole or part. It is not to be used on any other project and is to be returned on request.

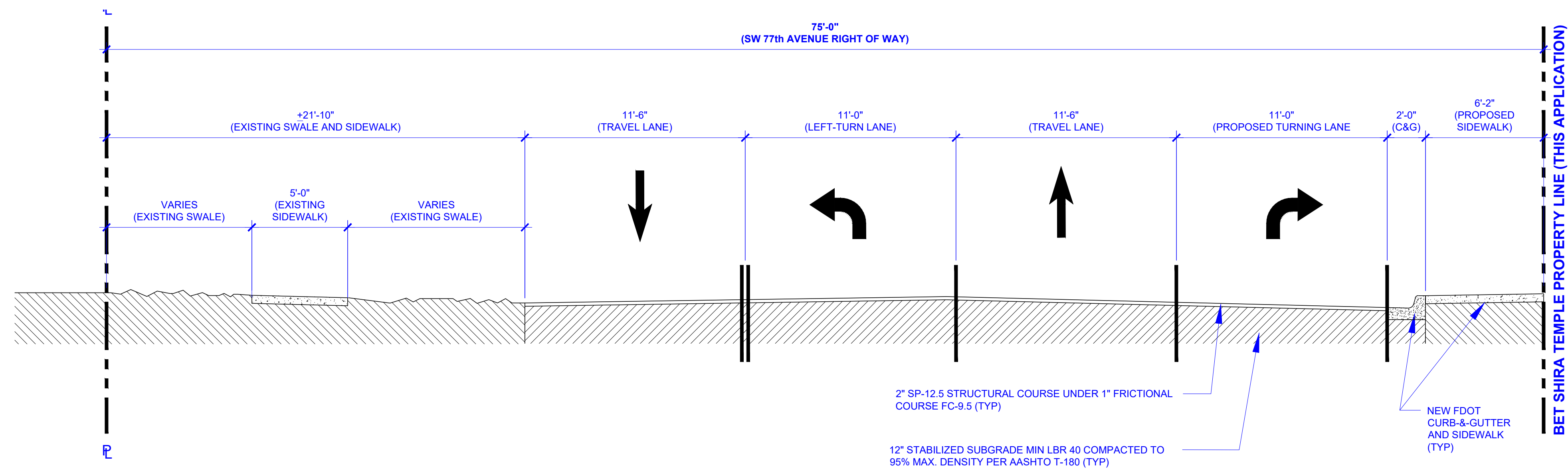
COPYRIGHT © 2025

SHEET TITLE

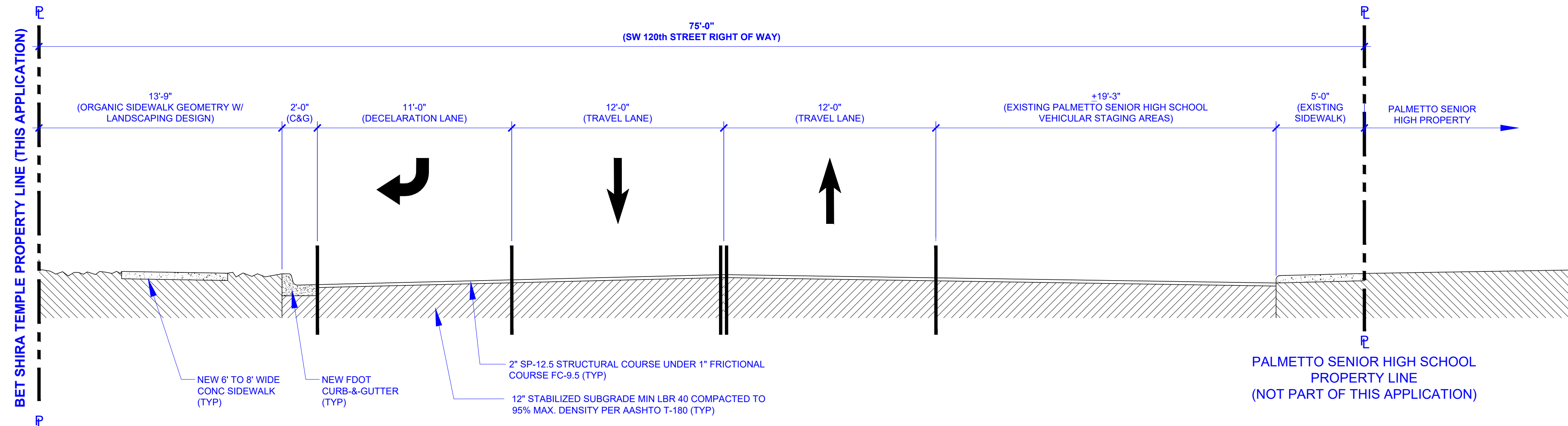
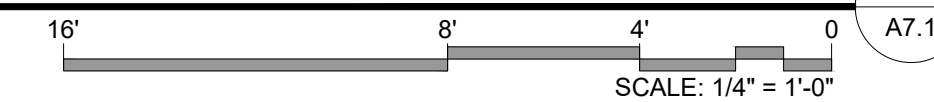
**TYPICAL
ROW SECTION
DETAILS**

SHEET NUMBER

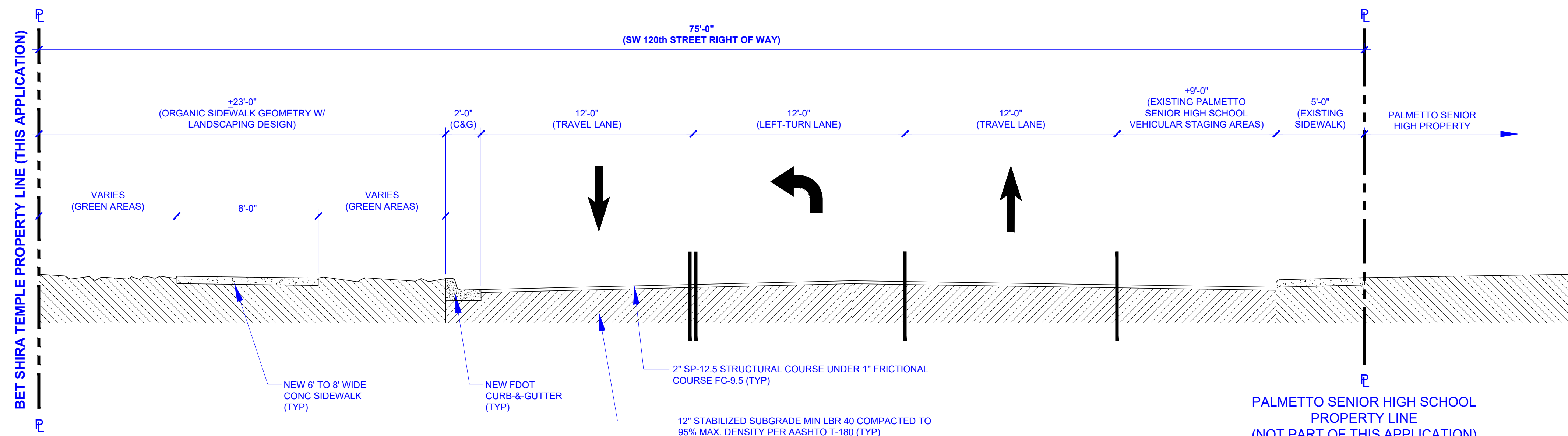
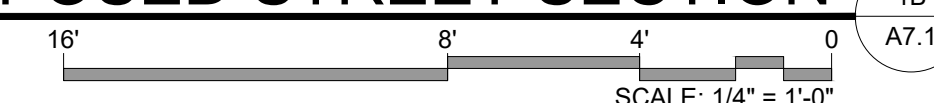
A-7.1



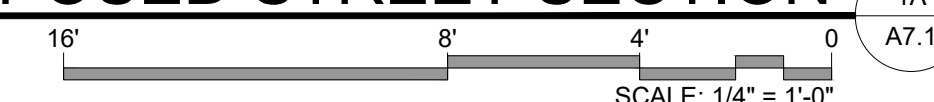
S.W. 77 AVENUE ROW - PROPOSED STREET SECTION



S.W. 120th STREET ROW - PROPOSED STREET SECTION



S.W. 120th STREET ROW - PROPOSED STREET SECTION





Date	Description	No.
Revisions		

LANGAN
 Langan Engineering and
 Environmental Services, Inc.

110 East Broward Boulevard, Suite 1500
 Fort Lauderdale, FL 33301

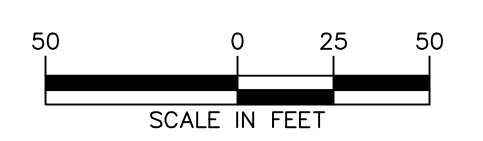
T: 954.320.2100 F: 954.320.2101 www.langan.com
 FL CERTIFICATE OF AUTHORIZATION NO. 00006601/LB8172/LB8198

Project
**PINECREST AT BET
 SHIRA K8 CHARTER
 SCHOOL**

MIAMI-DADE COUNTY FLORIDA
 Drawing Title

CONCEPT SKETCH

Project No. 330118701	Drawing No. KT101
Date DECEMBER 2024	
Drawn By RSM	
Checked By MGP	



ATTACHMENT A
Terms and Conditions

Choice Engineering Consultants, Inc.**TERMS AND CONDITIONS**

- 1) **Consultant's Scope of Services and Additional Services.** The Consultant's undertaking to perform professional services extends only to the services specifically described in this Agreement. However, if requested by the Client and agreed to by the Consultant, the Consultant will perform additional services ("Additional Services"), and such Additional Services shall be governed by these provisions. Unless otherwise agreed to in writing, the Client shall pay the consultant for the performance of any Additional Services an amount based upon the Consultant's then-current hourly rates plus an amount to cover certain direct expenses including in-house duplicating, local mileage, telephone calls, postage, and word processing. Other direct expenses will be billed at 1.15 times cost. Technical use of computers for design, analysis, GIS, and graphics, etc., will be billed at \$25.00 per hour.
- 2) **Miscellaneous Provisions.** This agreement is to be governed by the law of the State of Florida. This Agreement contains the entire and fully integrated agreement between the parties and supersedes all prior and contemporaneous negotiations, representations, agreements, or understandings, whether written or oral. Except as provided in Section 1, this Agreement can be supplemented or amended only by a written document executed by both parties. Provided, however, that any conflicting or additional terms on any purchase order issued by the Client shall be void and are hereby expressly rejected by the Consultant. Any provision in this Agreement that is unenforceable shall be ineffective to the extent of such unenforceability without invalidating the remaining provision. The non-enforcement of any provisions by either party shall, not constitute a waiver of that provision nor shall it affect the enforceability of that provision or of the remainder of this Agreement. (i) **Client's Responsibilities.** In addition to other responsibilities described herein or imposed by law, the Client shall:
 - (a) Designate in writing a person to act as its representative with respect to this Agreement, such person having complete authority to transmit instructions, receive information, and make or interpret the Client's decisions.
 - (b) Provide all information and criteria as to the Client's requirements, objectives, and expectations for the project including all numerical criteria that are to be met and all standards of development, design, or construction.
 - (c) Provide to the Consultant all previous studies, plans, or other documents pertaining to the project and all new data reasonably necessary in the Consultant's opinion, such as site survey and engineering data, environmental impact assessments or statements, zoning, or other land use regulations, etc., upon all of which the Consultant may rely.
 - (d) Arrange for access to the site and other private or public property as required for the Consultant to provide its services,
 - (e) Review all documents or oral reports presented by the Consultant and render in writing decisions pertaining thereto within a reasonable time so as not to delay the services of the Consultant.
 - (f) Furnish approvals and permits from governmental authorities having jurisdiction over the project and approvals and consents from other parties as may be necessary for completion of the Consultant's services.
 - (g) Cause to be provided such independent accounting, legal, insurance, cost estimating and overall feasibility services as the Client may require, or the Consultant may reasonably request in furtherance of the project development.

- (h) Give prompt written notice to the consultant whenever the Client becomes aware of any development that affects the scope and timing of the Consultant's services or any defect or noncompliance in any aspect of the project.
 - (i) Bear all costs incident to the responsibilities of the Client.
- 3) **Period of Services.** Unless otherwise stated herein, the Consultant will begin work timely after receipt of an executed copy of this Agreement and will complete the services in a reasonable time. This Agreement is made in anticipation of conditions permitting continuous and orderly progress through completion of the services. Times for performance shall be extended as necessary for delays or suspensions due to circumstances that the Consultant does not control. If such delay or If such delay or suspension extends for more than six months (cumulatively), Consultant's compensation shall be renegotiated.
- 4) **Method of Payment.** Compensation shall be paid to the Consultant in accordance with the following provisions:
 - (a) Invoices will be submitted by the Consultant to the Client periodically for services performed and expenses incurred. Payment of each invoice will be due within 25 days of receipt. The Client shall also pay to the Consultant all transaction taxes, if any, whether state, local, or federal, levied with respect to amounts paid hereunder, including but not limited to sales tax. The Consultant shall be compensated in U.S. dollars. Interest will be added to accounts not paid within 25 days at the maximum rate allowed by law. If the Client fails to make any payment due the Consultant under this or any other agreement within 30 days after the Consultants transmittal of its invoice, the Consultant may, after giving notice to the Client, suspend services under this Agreement until all amounts due are paid in full.
 - (b) If the Client objects to an invoice, it must advise the Consultant in writing giving its reasons within 14 days of receipt of the invoice or the Client's objections will be waived, and the invoice shall conclusively be deemed due and owing. (c) The Client agrees that the payment to the Consultant is not subject to any contingency or condition. The Consultant may negotiate payment of any check tendered by the Client, even if the words "in full satisfaction" or words intended to have similar effect appear on the check without such negotiation being an accord and satisfaction of any disputed debt and without prejudicing any right of the Consultant to collect additional amounts from the Client.
- 5) **Use of Documents.** All documents, including but not limited to drawings, specifications and data or programs stored electronically, prepared by the Consultant are related exclusively to the services described in this Agreement, and may be used only if the Client has satisfied all its obligations under this Agreement. They are not intended or represented to be suitable for use, partial use or reuse by the Client or others on extensions of this project or on any other project. Any modifications made by the Client to any of the Consultant's documents, or any use, partial use or reuse of the documents without written authorization or adaptation by the Consultant will be at the Client's sole risk and without liability to the Consultant, and the Client shall indemnify, defend and hold the Consultant harmless from all claims, damages, losses and expenses, including but not limited to attorneys' fees, resulting therefrom. Any authorization or adaptation will entitle the Consultant to further compensation at rates to be agreed upon by the Client and the Consultant. Any electronic files not containing an electronic seal or provided only for the convenience of the Client, and use of them is at the Client's sole risk. In the case of any defects in the electronic files or any discrepancies between them and the hardcopy of the documents prepared by the Consultant, the hardcopy shall govern. Only printed copies of documents conveyed by the Consultant may be relied upon. Because data stored in electronic media format can deteriorate

or be modified without the Consultant's authorization, the Client has 60 days to perform acceptance tests, after which it shall be deemed to have accepted the data.

- 6) **Opinions of Cost.** Because the Consultant does not control the cost of labor, materials, equipment or services furnished by others, methods of determining prices, or competitive bidding or market conditions, any opinions rendered as to costs, including but not limited to opinions as to the costs of construction and materials, shall be made on the basis of its experience and represent its judgment as an experienced and qualified professional, familiar with the industry. The Consultant cannot and does not guarantee that proposals, bids, or actual costs will not vary from its opinions of cost. If the Client wishes greater assurance as to the amount of any cost, it shall employ an independent cost estimator. The Consultant's services required to bring costs within any limitation established by the Client will be paid for as Additional Services.
- 7) **Termination.** The obligation to provide further services under this Agreement may be terminated by either party upon seven days' written notice in the event of substantial failure by the other party to perform in accordance with the terms hereof through no fault of the terminating party, or upon thirty days' written notice for the convenience of the terminating party. If any material change occurs in the ownership of the Client, the Consultant shall have the right to immediately terminate this Agreement. In the event of any termination, the Consultant shall be paid for all services rendered and expenses incurred to the effective date of termination, and other reasonable expenses incurred by the Consultant as a result of such termination. If the Consultant's compensation is a fixed fee, the amount payable for services will be a proportional amount of the total fee based on the ratio of the amount of the services performed, as reasonably determined by the Consultant, to the total amount of services which were to have been performed.
- 8) **Insurance.** The Consultant carries Workers' Compensation insurance, professional liability insurance, and general liability insurance. If the Client directs the Consultant to obtain increased insurance coverage, the Consultant will take out such additional insurance, if obtainable, at the Client's expense.
- 9) **Standard of Care.** In performing its professional services, the Consultant will use that degree of care and skill ordinarily exercised, under similar circumstances, by reputable members of its profession in the same locality at the time the services are provided. No warranty, express or implied, is made or intended by the Consultant undertaking herein or its performance of services, and it is agreed that the Consultant is not a fiduciary with respect to the Client.
- 10) **LIMITATION OF LIABILITY.** In recognition of the relative risks and benefits of the Project to both the Client and the Consultant, the risks have been allocated such that the Client agrees, to the fullest extent of the law, and notwithstanding any other provision of this Agreement or the existence of applicable insurance coverage, that the total liability, in the aggregate, of the Consultant and the Consultants' officers, directors, employees, agents, and subconsultants to the Client: or to anyone claiming by, through, or under the Client, for any and all claims losses, costs or damages whatsoever arising out of, resulting from or in any way related to the services under this Agreement from any cause or causes, including but not limited to, the negligence, professional errors or omissions, strict liability or breach of contract or any warranty, express or implied, of the Consultant or the Consultants' officers, directors, employees, agents, and subconsultants, shall not exceed twice the total compensation received by the Consultant under this Agreement or \$50,000, whichever is greater. Higher Limits of liability may be negotiated for additional fee. Under no circumstances shall the Consultant be liable for lost profits or consequential damages, for extra costs or other consequences due to changed conditions or for costs

related to the failure of contractors to perform work in accordance with the plans and specifications. This Section 10 is intended solely to limit the remedies available to the Client, and nothing in this Section 10 shall require the Client to indemnify the Consultant.

- 11) **Certifications.** The Consultant shall not be required to execute any certifications or other documents that might, in the judgment of the Consultant, increase the Consultant's risk or affect the availability, applicability, or cost of its insurance.
- 12) **Dispute Resolution.** All claims by the Client arising out of this Agreement or its breach shall be submitted first to mediation in accordance with the Construction industry Mediation Rules of the American Arbitration Association as a condition precedent to litigation. Any mediation or civil action by Client must be commenced within one year of the accrual of the cause of action asserted but in no event later than allowed by applicable statutes.
- 13) **Hazardous Substances and Conditions.**
 - (a) Services related to determinations involving hazardous substances or conditions, as defined by federal or state law, are limited to those tasks expressly stated in the scope of services. In any event, Consultant shall not be a custodian, transporter, handler, arranger, contractor, or remediator with respect to hazardous substances and conditions. Consultant's services will be limited to professional analysis, recommendations, and reporting, including, when agreed to, plans and specifications for isolation, removal, or remediation.
 - (b) The Consultant shall notify the Client of hazardous substances or conditions not contemplated in the scope of services of which the Consultant becomes aware. Upon such notice by the Consultant, the Consultant may stop affected portions of its services until the hazardous substance or condition is eliminated. The parties shall decide if Consultant is to proceed with its services and if Consultant is to conduct testing and evaluation, and the parties may enter into further agreements as to the additional scope, fee, and terms for such services.
 - (c) Except to the extent of negligence, if any, on the part of the Consultant in performing services expressly undertaken in connection with hazardous substances and conditions, the Client agrees to hold harmless, indemnify, and defend the Consultant from and against any and all claims, losses, damages, liability, and costs in any way arising out or connected with the presence, discharge, release, or escape of hazardous substances or conditions of any kind, or environmental liability of any nature, in any manner related to services of the Consultant.
- 14) **Construction Phase Services.**
 - (a) If the Consultant's services include the preparation of documents to be used for construction and the Consultant is not retained to make periodic site visits, the Client assumes all responsibility for interpretation of the documents and for construction observation, and the Client waives any claims against the Consultant in any way connected thereto.
 - (b) If the Consultant provides construction phase services, the Consultant shall have no responsibility for any contractor's means, methods, techniques, equipment choice and usage, sequence, schedule, safety programs, or safety practices, nor shall Consultant have any authority or responsibility to stop or direct the work of any contractor. The Consultant's visits will be for the purpose of endeavoring to provide the Client a greater degree of confidence that the completed work of its contractors will generally conform to the construction documents prepared by the Consultant. Consultant neither guarantees the performance of contractors, nor assumes responsibilities for any contractor's failure to perform its work in accordance with the contract documents.
 - (c) The Consultant is not responsible for any duties assigned to the design professional in the construction contract that are not expressly provided for in this Agreement. The Client agrees that each

contract with any contractor shall state that the contractor shall be solely responsible for job site safety and for its means and methods; that the contractor shall indemnify the Client and the Consultant for all claims and liability arising out of job site accidents; and that the Client and the Consultant shall be made additional insured under the contractor's general liability insurance policy.

- 15) No Third-Party Beneficiaries; Assignment and Subcontracting. This Agreement gives no rights or benefits to anyone other than the Client and the Consultant, and all duties and responsibilities undertaken pursuant to this Agreement will be for the sole benefit of the Client and the Consultant. The Client shall not assign or transfer any rights under or interest in this Agreement, or any claim arising out of the performance of services by the consultant, without the written consent of the Consultant. The Consultant reserves the right to augment its staff with subconsultants as it deems appropriate due to project logistics, schedules, or market conditions. If the Consultant exercises this right, the Consultant will maintain the agreed upon billing rates for services identified in the contract, regardless of whether the services are provided by in-house employees, contract employees, or independent subconsultants.
- 16) Confidentiality. The Client consents to the use and dissemination by the Consultant of photographs of the project and to the use by the Consultant of facts, data and Information obtained by the Consultant in the performance of its services. If, however, any facts, data and information are specifically identified in writing by the Client as confidential, the Consultant shall use reasonable care to maintain the confidentiality of that material.
- 17) Miscellaneous Provisions. This agreement is to be governed by the law of the State of Florida. This Agreement contains the entire and fully integrated agreement between the parties and supersedes all prior and contemporaneous negotiations, representations, agreements, or understandings, whether written or oral. Except as provided in Section 1, this Agreement can be supplemented or amended only by a written document executed by both parties. Provided, however, that any conflicting or additional terms on any purchase order issued by the Client shall be void and are hereby expressly rejected by the Consultant. Any provision in this Agreement that is unenforceable shall be ineffective to the extent of such unenforceability without invalidating the remaining provision. The non-enforcement of any provisions by either party shall, not constitute a waiver of that provision nor shall it affect the enforceability of that provision or of the remainder of this Agreement.

**VILLAGE OF PINECREST STAFF HOUR ESTIMATION
WORKSHEET PACKAGE**

**SW 120 Street Corridor Improvements
From West of SW 77 Ave to East of SW 74 Ave**



PINECREST

MARCH 2026



Project Information Sheet

Village of Pinecrest Project No.: TBD Contractor Project Identification Number: TBD
 Name of Prime / Subconsultant: Choice Engineering Consultants County: Miami-Dade
 Project Description: SW 120 St Corridor Improvements - From W of SW 77 Ave to E of SW 74 Ave
 Street 1: SW 120 Street Street 2: SW 77 Avenue Street 3: _____
 Proposed Design Contract Time: 12 months/days Date of Negotiation: _____

Project Activity:	Estimated By:		Negotiated By: (name - firm)	
	Consultant	FDOT	Consultant	FDOT
3. Project Common & Project General Tasks	Enter name & firm	Enter name & office	Enter name & firm	Enter name & office
4. Roadway Analysis	Enter name & firm	Enter name & office	Enter name & firm	Enter name & office
5. Roadway Plans	Enter name & firm	Enter name & office	Enter name & firm	Enter name & office
6a. Drainage Analysis	Enter name & firm	Enter name & office	Enter name & firm	Enter name & office
6b. Drainage Plans	Enter name & firm	Enter name & office	Enter name & firm	Enter name & office
7. Utilities	Enter name & firm	Enter name & office	Enter name & firm	Enter name & office
19. Signing and Pavement Marking Analysis	Enter name & firm	Enter name & office	Enter name & firm	Enter name & office
20. Signing and Pavement Marking Plans	Enter name & firm	Enter name & office	Enter name & firm	Enter name & office
21. Signalization Analysis	Enter name & firm	Enter name & office	Enter name & firm	Enter name & office
22. Signalization Plans	Enter name & firm	Enter name & office	Enter name & firm	Enter name & office

Project Staff Hour Summary

Name of Consultant:

Choice Engineering Consultants

SW 120 St Corridor Improvements - From W of SW 77 Ave to E of SW 74 Ave

TBD

		Project Staff Hours													
Activity No.	Activity	Choice Engineering Consultants	Enter Name Sub 1	Sub 2	Sub 3	Sub 4	Sub 5	Sub 6	Sub 7	Sub 8	Sub 9	Sub 10	Sub 11	Sub 12	Total Hours
3	Project Common and General Tasks	60													60
4	Roadway Analysis	407													407
5	Roadway Plans	116													116
6a	Drainage Analysis	98													98
6b	Drainage Plans	50													50
7	Utilities	32													32
19	Signing & Pavement Marking Analysis	77													77
20	Signing & Pavement Marking Plans	42													42
21	Signalization Analysis	56													56
22	Signalization Plans	30													30
Project Total		968	0	0	0	0	0	0	0	0	0	0	0	0	968
27	Survey Field Crew Days	0													0

- Notes: 1. Staff hours for prime consultant come directly from each discipline's worksheet.
 2. Staff hours for subconsultants are to be entered manually into columns D through O.
 3. For workbooks prepared by subconsultants, their project hours will be totaled in column C.

ESTIMATE OF WORK EFFORT FOR TECHNICAL PROPOSALS - GRAND TOTAL

Project Number: TBD

Project Name: SW 120 St Corridor Improvements - From W of SW 77 Ave to E of SW 74 Ave

FAP Number: TBD

Date: mm/dd/yyyy Name of Consultant: Choice Engineering Consultants

WORK ACTIVITY	Hours from "Summary" sheet	EMPLOYEE CLASSIFICATION												TOTAL STAFF HOURS		ON CADD
	Grand Total	Project Manager	Project Engineer	Engineering Intern	Engineering Technician	Staff Classification 5	Staff Classification 6	Staff Classification 7	Staff Classification 8	Staff Classification 9	Staff Classification 10	Staff Classification 11	Staff Classification 12	RANGE		PERCENT
	Hours	Hours	Hours	Hours	Hours	Hours	Hours	Hours	Hours	Hours	Hours	Hours	Hours			
3. Project General and Project Common Tasks	60	30	30	0	0	0	0	0	0	0	0	0	0	60	66	
4. Roadway Analysis	407	41	163	122	81	0	0	0	0	0	0	0	0	407	448	
5. Roadway Plans	116	12	46	35	23	0	0	0	0	0	0	0	0	116	128	
6a. Drainage Analysis	98	10	39	29	20	0	0	0	0	0	0	0	0	98	108	
6b. Drainage Plans	50	5	20	15	10	0	0	0	0	0	0	0	0	50	55	
7. Utilities	32	3	13	10	6	0	0	0	0	0	0	0	0	32	35	
8. Environmental Permits, Compliance & Clearances	0	0	0	0	0	0	0	0	0	0	0	0	0	0	0	
19. Signing & Pavement Marking Analysis	77	8	31	23	15	0	0	0	0	0	0	0	0	77	85	
20. Signing & Pavement Marking Plans	42	4	17	13	8	0	0	0	0	0	0	0	0	42	46	
21. Signalization Analysis	56	6	22	17	11	0	0	0	0	0	0	0	0	56	62	
22. Signalization Plans	30	3	12	9	6	0	0	0	0	0	0	0	0	30	33	
27. Survey (Field & Office Support)	0	0	0	0	0	0	0	0	0	0	0	0	0	0	0	
28. Photogrammetry	0	0	0	0	0	0	0	0	0	0	0	0	0	0	0	
29. Mapping	0	0	0	0	0	0	0	0	0	0	0	0	0	0	0	
TOTALS	968	122	393	273	180	0	0	0	0	0	0	0	0	968	1,066	

ESTIMATE OF WORK EFFORT FOR TECHNICAL PROPOSALS - GRAND TOTAL

Financial Project Number: TBD

Project Name: SW 120 St Corridor Improvements - From W of SW 77 Ave to E of SW 74 Ave

FAP Number: TBD

Date: mm/dd/yyyy Name of Consultant: Choice Engineering Consultants

Staff Hour Distribution Percentages - Grand Total														
	Hours from "Summary" sheet Grand Total	Project Manager	Project Engineer	Engineering Intern	Engineering Technician	Staff Classification 5	Staff Classification 6	Staff Classification 7	Staff Classification 8	Staff Classification 9	Staff Classification 10	Staff Classification 11	Staff Classification 12	Total
3. Project General and Project Common Tasks	60	50.0%	50.0%	0.0%	0.0%	0.0%	0.0%	0.0%	0.0%	0.0%	0.0%	0.0%	0.0%	100.00%
4. Roadway Analysis	407	10.0%	40.0%	30.0%	20.0%	0.0%	0.0%	0.0%	0.0%	0.0%	0.0%	0.0%	0.0%	100.00%
5. Roadway Plans	116	10.0%	40.0%	30.0%	20.0%	0.0%	0.0%	0.0%	0.0%	0.0%	0.0%	0.0%	0.0%	100.00%
6a. Drainage Analysis	98	10.0%	40.0%	30.0%	20.0%	0.0%	0.0%	0.0%	0.0%	0.0%	0.0%	0.0%	0.0%	100.00%
6b. Drainage Plans	50	10.0%	40.0%	30.0%	20.0%	0.0%	0.0%	0.0%	0.0%	0.0%	0.0%	0.0%	0.0%	100.00%
7. Utilities	32	10.0%	40.0%	30.0%	20.0%	0.0%	0.0%	0.0%	0.0%	0.0%	0.0%	0.0%	0.0%	100.00%
8. Environmental Permits, Compliance & Clearances	0	0.0%	0.0%	0.0%	0.0%	0.0%	0.0%	0.0%	0.0%	0.0%	0.0%	0.0%	0.0%	0.00%
19. Signing & Pavement Marking Analysis	77	10.0%	40.0%	30.0%	20.0%	0.0%	0.0%	0.0%	0.0%	0.0%	0.0%	0.0%	0.0%	100.00%
20. Signing & Pavement Marking Plans	42	10.0%	40.0%	30.0%	20.0%	0.0%	0.0%	0.0%	0.0%	0.0%	0.0%	0.0%	0.0%	100.00%
21. Signalization Analysis	56	10.0%	40.0%	30.0%	20.0%	0.0%	0.0%	0.0%	0.0%	0.0%	0.0%	0.0%	0.0%	100.00%
22. Signalization Plans	30	10.0%	40.0%	30.0%	20.0%	0.0%	0.0%	0.0%	0.0%	0.0%	0.0%	0.0%	0.0%	100.00%
27. Survey (Field & Office Support)	0	0.0%	0.0%	0.0%	0.0%	0.0%	0.0%	0.0%	0.0%	0.0%	0.0%	0.0%	0.0%	0.00%
28. Photogrammetry	0	0.0%	0.0%	0.0%	0.0%	0.0%	0.0%	0.0%	0.0%	0.0%	0.0%	0.0%	0.0%	0.00%
29. Mapping	0	0.0%	0.0%	0.0%	0.0%	0.0%	0.0%	0.0%	0.0%	0.0%	0.0%	0.0%	0.0%	0.00%

Note: This spreadsheet to be used in Technical Proposal for Districts requiring the Grand Total hours be provided along with percentage distribution by classification.

ESTIMATE OF WORK EFFORT AND COST - PRIME CONSULTANT

Name of Project: SW 120 St Corridor Improvements - From W of SW 77 Ave to E of SW 74 Ave
 County: Miami-Dade
 FPN: TBD
 FAP No.: TBD

Consultant Name: Choice Engineering Consultants
 Consultant No.: enter consultants proj. number
 Date: 3/3/2026
 Estimator: R. Aguilar

Staff Classification	Hours From "SH Summary - Firms"	Project Manager	Project Engineer	Engineering Intern	Engineering Technician	Staff Classification 5	Staff Classification 6	Staff Classification 7	Staff Classification 8	Staff Classification 9	Staff Classification 10	Staff Classification 11	Staff Classification 12	SH By Activity	Salary Cost By Activity	Average Rate Per Task
		\$263.63	\$199.93	\$125.07	\$88.96	\$0.00	\$0.00	\$0.00	\$0.00	\$0.00	\$0.00	\$0.00	\$0.00	\$0.00		
3. Project General and Project Common Tasks	60	30	30	0	0	0	0	0	0	0	0	0	0	60	\$13,907	\$231.78
4. Roadway Analysis	407	41	163	122	81	0	0	0	0	0	0	0	0	407	\$65,862	\$161.82
5. Roadway Plans	116	12	46	35	23	0	0	0	0	0	0	0	0	116	\$18,784	\$161.93
6a. Drainage Analysis	98	10	39	29	20	0	0	0	0	0	0	0	0	98	\$15,840	\$161.63
6b. Drainage Plans	50	5	20	15	10	0	0	0	0	0	0	0	0	50	\$8,082	\$161.65
7. Utilities	32	3	13	10	6	0	0	0	0	0	0	0	0	32	\$5,174	\$161.70
19. Signing & Pavement Marking Analysis	77	8	31	23	15	0	0	0	0	0	0	0	0	77	\$12,518	\$162.57
20. Signing & Pavement Marking Plans	42	4	17	13	8	0	0	0	0	0	0	0	0	42	\$6,791	\$161.69
21. Signalization Analysis	56	6	22	17	11	0	0	0	0	0	0	0	0	56	\$9,085	\$162.23
22. Signalization Plans	30	3	12	9	6	0	0	0	0	0	0	0	0	30	\$4,849	\$161.65
Total Staff Hours	968	122	393	273	180	0	0	0	0	0	0	0	0	968		
Total Staff Cost		\$32,162.86	\$78,572.49	\$34,144.11	\$16,012.80	\$0.00	\$0.00	\$0.00	\$0.00	\$0.00	\$0.00	\$0.00	\$0.00		\$160,892.26	\$166.21

Check = \$160,892.26

Survey Field Days by Subconsultant
 4 - Person Crew:

- Notes:
 1. This sheet to be used by Prime Consultant to calculate the Grand Total fee.
 2. Manually enter fee from each subconsultant. Unused subconsultant rows may be hidden.

SALARY RELATED COSTS:		\$160,892.26
OVERHEAD:	0%	\$0.00
OPERATING MARGIN:	0%	\$0.00
FCCM (Facilities Capital Cost Money):	0.00%	\$0.00
EXPENSES:	0.00%	\$0.00
Survey (Field - if by Prime)	0 4-man crew days @ \$ - / day	\$0.00
SUBTOTAL ESTIMATED FEE:		\$160,892.26
Subconsultant: Hadonne	Survey, R/W, SUE	\$43,238.90
Subconsultant: Geosol	Geotechnical Engineering	\$6,631.78
SUBTOTAL ESTIMATED FEE:		\$210,762.94
Post Desing Services Separately on a Per Hour Basis.		\$0.00
GRAND TOTAL ESTIMATED FEE:		\$210,762.94

Project Activity 3: General Tasks

Estimator: Rafael Aguilar

SW 120 St Corridor Improvements - From W of SW 77 Ave to E of SW 74 Ave

TBD

Representing	Print Name	Signature / Date
Village of Palmetto Bay		
Choice Engineering		

NOTE: Signature Block is optional, per District preference

Task No.	Task	Units	No of Units	Hours/ Unit	Total Hours	Comments
3.1	Public Involvement					
3.1.1	Community Awareness Plan	LS	1	0	0	
3.1.2	Notifications	LS	1	0	0	
3.1.3	Prepare Mailing Lists	LS	1	0	0	
3.1.8	PowerPoint Presentation	LS	1	0	0	
3.1.9	Public Meeting Preparations	LS	1	12	12	Support to the Village for Public Involvement. Preparation of Exhibits - 4Hrs Attendance to Public Meetings (2 ppl @ 3 Hrs) Meeting Resolution and Documentation - 2 Hrs
3.1.10	Public Meeting Attendance/Followup	LS	1	8	8	
3.1.11	Other Agency Meetings	LS	1	4	4	4 Meetings with Village @ 1hrs/meeting - Includes Meeting Minutes and Follow-up
3.1.12	Web Site	LS	1	0	0	
3.1 Public Involvement Subtotal					24	
3.2	Joint Project Agreements	EA	0	0	0	
3.3	Specifications Package Preparation	LS	1	12	12	
3.4	Contract Maintenance and EDMS	LS	1	16	16	4hrs Setup + 1hrs/mth * 12mths
3.5	Value Engineering (Multi-Discipline Team) Review	LS	1	0	0	
3.6	Prime Consultant Project Manager Meetings	LS	1	0	0	
3.7	Plans Update	LS	1	0	0	

Project Activity 3: General Tasks

Task No.	Task	Units	No of Units	Hours/ Unit	Total Hours	Comments
3.8	Post Design Services	LS	1	0	0	To be charged per hour on a per need basis.
3.9	Digital Delivery	LS	1	0	0	
3.10	Risk Assessment Workshop	LS	1	0	0	
3.11	Railroad, Transit, and/or Airport Coordination	LS	1	0	0	
3.12	Other Project General Tasks	LS	1	8	8	4 Meetings with Prime (4@2hrs)
3. Project Common and Project General Tasks Total					60	

3.6 - List of Project Manager Meetings	Units	No of Units	Hours/ Unit	Total Hours	Comments
Roadway Analysis	EA	7	0	0	
Drainage	EA	0	0	0	
Utilities	EA	0	0	0	
Environmental	EA	0	0	0	
Structures	EA	0	0	0	
Signing & Pavement Marking	EA	0	0	0	
Signalization	EA	0	0	0	
Lighting	EA	0	0	0	
Landscape Architecture	EA	0	0	0	
Survey	EA	0	0	0	
Photogrammetry	EA	0	0	0	
ROW & Mapping	EA	0	0	0	
Terrestrial Mobile LiDAR	EA	0	0	0	
Architecture	EA	0	0	0	
Noise Barriers	EA	0	0	0	
ITS Analysis	EA	0	0	0	
Geotechnical	EA	0	0	0	
Progress Meetings	EA	0	0	0	
Phase Reviews	EA	3	1	3	
Field Reviews	EA	0	0	0	
Total Project Manager Meetings		10		3	Total PM Meeting Hours carries to Task 3.6 above

Notes:

1. If the hours per meeting vary in length (hours) enter the average in the hour/unit column.
2. Do not double count agency meetings between permitting agencies.
3. Project manager meetings are calculated in each discipline sheet and brought forward to Column D, except for Photogrammetry.

Project Activity 4: Roadway Analysis

Estimator:

SW 120 St Corridor Improvements - From W of SW 77 Ave to E of SW 74 Ave

TBD

Representing	Print Name	Signature / Date
FDOT District		
Choice Engineering		

NOTE: Signature Block is optional, per District preference

Task No.	Task	Units	No of Units	Hours/ Unit	Total Hours	Comments
4.1	Typical Section Package	LS	1	12	12	2 Typical Sections SW 120 Street SW 77 Ave
4.2	Pavement Type Selection Report	LS	1	0	0	NOT REQUIRED
4.3	Pavement Design Package	LS	1	12	12	Development of Pavement Design 2 Pavement Designs 1) Widening 2) Milling and Resurfacing
4.4	Cross-Slope Correction	LS	1	12	12	Evaluation of Existing Cross Slope Correction Using the Village's Survey
4.5	Horizontal /Vertical Master Design Files	LS	1	154	154	Geometric Modifications for 1 Alternative 1. SW 120 Street (0.4 Miles) 2. SW 77 Ave (0.15 Miles)
4.6	Access Management	LS	1	0	0	
4.7	Roundabout Evaluation	LS	1	0	0	
4.8	Roundabout Final Design Analysis	LS	1	0	0	
4.9	Cross Section Design Files	LS	1	32	32	Cross Sections every 50-ft + Critical Cross Sections
4.10	Traffic Control Analysis	LS	1	40	40	<i>Level II Includes analysis for determining overall phase planning (concept), lane closure analysis, detours, diversions, and creating any miscellaneous traffic control sheets (general notes, minor details, typical sections, and quantities). (LS) 40-120 hrs.</i> <i>2-Lane, Two-Way Undivided requiring temporary pavement to maintain traffic. Analysis required for the two collector streets 80 Hrs</i>
4.11	Master TCP Design Files	LS	1	48	48	Develop master TTCP files showing each phase of the TTCP. Includes all work necessary for designing lane configurations, diversions, lane shifts, signing and pavement markings, temporary traffic control devices, and temporary pedestrian ways. Vehicular TTCP (for Level II and Level III only): 32-48 hours per mainline mile per phase 3 Phases expected along each corridor @ 16 hrs/phase
4.12	Design Variations and Exceptions	LS	1	0	0	NOT REQUIRED
4.13	Design Report	LS	1	0	0	NOT REQUIRED
4.14	Quantities	LS	1	20	20	

Project Activity 4: Roadway Analysis

Task No.	Task	Units	No of Units	Hours/ Unit	Total Hours	Comments
4.15	Cost Estimate	LS	1	6	6	2 Construction Estimates (Development 4hrs; Update 2hrs)
4.16	Technical Special Provisions	LS	1	0	0	
4.17	Other Roadway Analyses	LS	1	0	0	
Roadway Analysis Technical Subtotal					336	

Project Activity 4: Roadway Analysis

Task No.	Task	Units	No of Units	Hours/ Unit	Total Hours	Comments
4.18	Field Reviews	LS	1	9	9	2 Field Reviews 1) Initial - 1hr Travel + 5hrs in field x 1 Person 2) Final - 1hr Travel + 2hrs in field x 1 Person
4.19	Monitor Existing Structures	LS	1	0	0	
4.20	Technical Meetings	LS	1	9	9	Meetings are listed below
4.21	Quality Assurance/Quality Control	LS	%	5%	17	
4.22	Independent Peer Review	LS	%	0%	0	
4.23	Supervision	LS	%	5%	17	
Roadway Analysis Nontechnical Subtotal					52	
4.24	Coordination	LS	%	5%	19	
4. Roadway Analysis Total					407	

Technical Meetings	Units	No of Units	Hours/ Unit	Total Hours	PM Attendance at Meeting Required?	Number	
Typical Section	EA	1	1	1	yes	1	
Pavement	EA	1	1	1	yes	1	
Access Management	EA	0	0	0		0	
15% Line and Grade	EA	1	1	1	yes	1	
Driveways	EA	0	0	0		0	
Local Governments (cities, counties, MPO)	EA	2	1	2	yes	3	
Work Zone Traffic Control	EA	2	1	2	yes	1	
30/60/90/100% Comment Review Meetings	EA	2	1	2	yes	0	
Other Meetings	EA	0	0	0		0	
Subtotal Technical Meetings				9		Subtotal Project Manager Meetings	7
Progress Meetings (if required by FDOT)	EA	0	0	0	<i>PM attendance at Progress Meetings is manually entered on General Task 3</i>	--	
Phase Review Meetings	EA	0	0	0	<i>PM attendance at Phase Review Meetings is manually entered on General Task 3</i>	--	
Total Meetings				9	Total Project Manager Meetings (carries to Tab 3)	7	

Carries to 4.17

Carries to Tab 3

Project Activity 5: Roadway Plans

Estimator:

SW 120 St Corridor Improvements - From W of SW 77 Ave to E of SW 74 Ave

TBD

Representing	Print Name	Signature / Date
FDOT District		
Choice Engineering		

NOTE: Signature Block is optional, per District preference

Task No.	Task	Scale	Units	No. of Units or Sheet	Hours/ Unit or Sheet	Total Hours	Comments
5.1	Key Sheet		Sheet	1	8	8	No Separate Component Key Sheets Key Sheet will cover all components in one plan set.
5.2	Summary of Pay Items Including Quantity Input		Sheet	1	4	4	
5.3	Typical Section Sheets						
5.3.1	Typical Sections		EA	2	6	12	
5.3.2	Typical Section Details		EA	2	2	4	Widening Detail Shoulder Treatment Detail
5.4	General Notes/Pay Item Notes		Sheet	1	4	4	
5.5	Summary of Quantities Sheets		Sheet	0	0	0	
5.6	Project Layout		Sheet	0	0	0	
5.7	Plan/Profile Sheet		Sheet	0	0	0	
5.8	Profile Sheet		Sheet	0	0	0	
5.9	Plan Sheet		Sheet	6	4	24	
5.10	Special Profile		Sheet	0	0	0	
5.11	Back-of-Sidewalk Profile Sheet		Sheet	0	0	0	
5.12	Interchange Layout Sheet		Sheet	0	0	0	
5.13	Ramp Terminal Details (Plan View)		Sheet	0	0	0	
5.14	Intersection Layout Details		Sheet	0	0	0	
5.15	Special Details		EA	0	0	0	
5.16	Cross-Section Pattern Sheet(s)		Sheet	0	0	0	

Project Activity 5: Roadway Plans

Task No.	Task	Scale	Units	No. of Units or Sheet	Hours/ Unit or Sheet	Total Hours	Comments
5.17	Roadway Soil Survey Sheet(s)		Sheet	0	0	0	
5.18	Cross Sections		EA	30	0.4	12	
5.19	Temporary Traffic Control Plan Sheets		Sheet	4	4	16	
5.20	Temporary Traffic Control Cross Section Sheets		EA	0	0	0	
5.21	Temporary Traffic Control Detail Sheets		Sheet	2	4	8	Typical Sections for phasing
5.22	Utility Adjustment Sheets		Sheet	0	0	0	Not Anticipated
5.23	Selective Clearing and Grubbing Sheet(s)		Sheet	0	0	0	
5.24	Project Network Control Sheet(s)		Sheet	2	4	8	
5.25	Environmental Detail Sheets		Sheet	0	0	0	
5.26	Utility Verification Sheet(s) (SUE Data)		Sheet	1	6	6	Hours are for inclusion of information into plans and analysis of results. Inclusion of Sheet into DR + LG Plans - SUE by Contractor or Prime Consultant
Roadway Plans Technical Subtotal						106	
5.27	Quality Assurance/Quality Control		LS	%	5%	5	
5.28	Supervision		LS	%	5%	5	
5. Roadway Plans Total						116	

Project Activity 6a: Drainage Analysis

Estimator:

SW 120 St Corridor Improvements - From W of SW 77 Ave to E of SW 74 Ave

TBD

Representing	Print Name	Signature / Date
FDOT District		
Choice Engineering		

NOTE: Signature Block is optional, per District preference

Task No.	Task	Units	No of Units	Hours/ Unit	Total Hours	Comments
6a.1	Drainage Map Hydrology	Per Map	0	0	0	
6a.2	Base Clearance Report	Per Location	0	0	0	
6a.3	Pond Siting Analysis and Report	Per Basin	0	0	0	
6a.4	Design of Cross Drains	EA	0	0	0	
6a.5	Design of Ditches	Per Ditch Mile	0	0	0	
6a.6	Design of Stormwater Management Facility (Offsite or Infield Pond)	EA	0	0	0	
6a.7	Design of Stormwater Management Facility (Roadside Ditch as Linear Pond)	Per Cell	4	5	20	
6a.8	Design of Floodplain Compensation	Per Floodplain Basin	0	0	0	
6a.9	Design of Storm Drains	EA	1	10	10	2 new 6hrs; 2 modifications 4hrs
6a.10	Optional Culvert Material	EA	0	0	0	
6a.11	French Drain Systems	Per Cell	2	8	16	
6a.12	Drainage Wells	EA	0	0	0	
6a.13	Drainage Design Documentation Report	LS	1	32	32	Mini-Drip
6a.14	Bridge Hydraulic Report	EA	0	0	0	

Project Activity 6a: Drainage Analysis

Task No.	Task	Units	No of Units	Hours/ Unit	Total Hours	Comments
6a.15	Temporary Drainage Analysis	LS	1	0	0	
6a.16	Cost Estimate	LS	1	0	0	
6a.17	Technical Special Provisions	LS	1	0	0	
6a.18	Other Drainage Analysis	LS	1	0	0	
Drainage Analysis Technical Subtotal					78	
6a.19	Field Reviews	LS	1	5	5	1 Field Review (1hr Travel + 4hrs in field)
6a.20	Technical Meetings	LS	1	2	2	Meetings are listed below
6a.21	Environmental Look-Around (ELA) Meeting	LS	1	0	0	
6a.22	Quality Assurance/Quality Control	LS	%	5%	4	
6a.23	Independent Peer Review	LS	%	0%	0	
6a.24	Supervision	LS	%	5%	4	
Drainage Analysis Nontechnical Subtotal					15	
6a.25	Coordination	LS	%	5%	5	
6a. Drainage Analysis Total					98	

Technical Meetings	Units	No of Units	Hours/ Unit	Total Hours	PM Attendance at Meeting Required?	Number
Base Clearance Water Elevation	EA	0	0	0		0
Pond Siting	EA	0	0	0		0
Agency	EA	0	0	0		0
Local Governments (cities, counties)	EA	2	1	2		0
FDOT Drainage	EA	0	0	0		0
Other Meetings	EA	0	0	0		0
Subtotal Technical Meetings				2		0
Progress Meetings (if required by FDOT)	EA	0	0	0	<i>PM attendance at Progress Meetings is manually entered on General Task 3</i>	--
Phase Review Meetings	EA	0	0	0	<i>PM attendance at Phase Review Meetings is manually entered on General Task 3</i>	--
Total Meetings				2	Total Project Manager Meetings (carries to Tab 3)	0

Carries to 6.19

Carries to Tab 3

6b. Drainage Plans

Estimator:

SW 120 St Corridor Improvements - From W of SW 77 Ave to E of SW 74 Ave

TBD

Representing	Print Name	Signature / Date
FDOT District		
Choice Engineering		

NOTE: Signature Block is optional, per District preference

Task No.	Task	Scale	Units	No. of Units or Sheet	Hours/ Unit or Sheet	Total Hours	Comments
6b.1	Drainage Map (Including Interchanges)		Sheet	2	4	8	2 Sheets at 100 Scale
6b.2	Bridge Hydraulics Recommendation Sheets		Sheet	0	0	0	
6b.3	Summary of Drainage Structures		Sheet	1	4	4	
6b.4	Optional Pipe/Culvert Material		Sheet	1	4	4	
6b.5	Drainage Structure Sheet(s) (Per Structure)		EA	6	3	18	
6b.6	Miscellaneous Drainage Detail Sheets		Sheet	1	8	8	French Drain Detail
6b.7	Lateral Ditch Plan/Profile		Sheet	0	0	0	
6b.8	Lateral Ditch Cross Sections		EA	0	0	0	
6b.9	Retention/Detention Ponds Detail Sheet(s)		Sheet	0	0	0	
6b.10	Retention Pond Cross Sections		EA	0	0	0	
6b.11	Erosion Control Plan Sheet(s)		Sheet	0	0	0	
6b.12	SWPPP Sheet(s)		Sheet	1	4	4	
Drainage Plans Technical Subtotal						46	
6b.13	Quality Assurance/Quality Control		LS	%	5%	2	
6b.14	Supervision		LS	%	5%	2	
6. Drainage Plans Total						50	

Project Activity 7: Utilities

Estimator:

SW 120 St Corridor Improvements - From W of SW 77 Ave to E of SW 74 Ave
TBD

Representing	Print Name	Signature / Date
FDOT District		
Choice Engineering		

NOTE: Signature Block is optional, per District preference

Task No.	Task	Units	No of Units	Hours/ Unit	Total Hours	Comments
7.1	Utility Kickoff Meeting	LS	1	0	0	
7.2	Identify Existing Utility Agency Owners (UAO(s))	LS	1	4	4	
7.3	Make Utility Contacts	LS	1	4	4	1hr/Utility 4 UAOs
7.4	Exception Processing	LS	1	0	0	
7.5	Preliminary Utility Meeting	LS	1	0	0	Meeting is listed below
7.6	Individual/Field Meetings	LS	1	0	0	Meetings are listed below
7.7	Collect and Review Plans and Data from UAO(s)	LS	1	8	8	4 UAOs @ 2hrs/UAO
7.8	Subordination of Easements Coordination	LS	1	0	0	
7.9	Utility Design Meeting	LS	1	0	0	Meeting is listed below
7.10	Review Utility Markups & Work Schedules, and Processing of Schedules & Agreements	LS	1	4	4	4 UAOs @ 2hrs/UAO
7.11	Utility Coordination/Followup	LS	1	0	0	
7.12	Utility Constructability Review	LS	1	0	0	
7.13	Additional Utility Services	LS	1	0	0	
7.14	Processing Utility Work by Highway Contractor (UWHC)	LS	1	8	8	
7.15	Contract Plans to UAO(s)	LS	1	4	4	
7.16	Certification/Close-Out	LS	1	0	0	
7.17	Other Utilities	LS	1	0	0	
7. Utilities Total					32	

Technical Meetings	Units	No of Units	Hours/ Unit	Total Hours	PM Attendance at Meeting Required?	Number
--------------------	-------	-------------	-------------	-------------	------------------------------------	--------

Project Activity 7: Utilities

Kickoff (see 7.1)	EA	0	0	0		0
Preliminary Meeting (see 7.5)	EA	0	0	0		0
Individual UAO Meetings (see 7.6)	EA	0	0	0		0
Field Meetings (see 7.6)	EA	0	0	0		0
Design Meeting (see 7.9)	EA	0	0	0		0
Other Meetings (<i>this is automatically added into Utilities Total (cell F27)</i>)	EA	0	0	0		0
Total Meetings				0	Total Project Manager Meetings (carries to Tab 3)	0

Carries to Tab 3

Project Activity 19: Signing and Pavement Marking Analysis

Estimator:

SW 120 St Corridor Improvements - From W of SW 77 Ave to E of SW 74 Ave

TBD

Representing	Print Name	Signature / Date
FDOT District		
Choice Engineering		

NOTE: Signature Block is optional, per District preference

Task No.	Task	Units	No. of Units	Hours/ Units	Total Hours	Comments
19.1	Traffic Data Analysis	LS	1	4	4	Review of Traffic Study
19.2	No Passing Zone Study	LS	1	0	0	
19.3	Reference and Master Design File	LS	1	50	50	Develop master design file showing all signing and pavement markings. Includes all work necessary to create the master design file and design the signing and pavement markings. Lower Range: 30 hours for setup and 40 hours per mile; School Zone Markings along 2 corridors
19.4	Multi-Post Sign Support Calculations	EA	1	0	0	
19.5	Sign Panel Design Analysis	EA	1	0	0	
19.6	Sign Lighting/Electrical Calculations	EA	1	0	0	
19.7	Quantities	LS	1	5	5	
19.8	Cost Estimate	LS	1	0	0	
19.9	Technical Special Provisions	LS	1	0	0	
19.10	Other Signing and Pavement Marking	LS	1	0	0	
Signing and Pavement Marking Analysis Technical Subtotal					59	
19.11	Field Reviews	LS	1	6	6	1 Field Review
19.12	Technical Meetings	LS	1	2	2	Meetings are listed below
19.13	Quality Assurance/Quality Control	LS	%	5%	3	
19.14	Independent Peer Review	LS	%	0%	0	
19.15	Supervision	LS	%	5%	3	
Signing and Pavement Marking Analysis Nontechnical Subtotal					14	
19.16	Coordination	LS	%	5%	4	
19. Signing and Pavement Marking Analysis Total					77	

Project Activity 19: Signing and Pavement Marking Analysis

Task No.	Task	Units	No. of Units	Hours/ Units	Total Hours	Comments	
Technical Meetings		Units	No of Units	Hours/ Unit	Total Hours	PM Attendance at Meeting Required?	Number
	Sign Panel Design	EA	0	0	0		0
	Queue Length Analysis	EA	0	0	0		0
	Local Governments (cities, counties)	EA	2	1	2		0
	Other Meetings	EA			0		0
Subtotal Technical Meetings					2	Subtotal Project Manager Meetings	0
	Progress Meetings (if required by FDOT)	EA	0	0	0	<i>PM attendance at Progress Meetings is manually entered on General Task 3</i>	--
	Phase Review Meetings	EA	0	0	0	<i>PM attendance at Phase Review Meetings is manually entered on General Task 3</i>	--
Total Meetings					2	Total Project Manager Meetings (carries to Tab 3)	0

Carries to 19.12

Carries to Tab 3

Project Activity 20: Signing and Pavement Marking Plans

Estimator:

SW 120 St Corridor Improvements - From W of SW 77 Ave to E of SW 74 Ave

TBD

Representing	Print Name	Signature / Date
FDOT District		
Choice Engineering		

NOTE: Signature Block is optional, per District preference

Task No.	Task	Scale	Units	No of Units	Hours/ Unit	No. of Sheets	Total Hours	Comments
20.1	Key Sheet		Sheet	1	4	1	4	
20.2	Summary of Pay Items Including TRNS•Port Input		LS	1	0		0	
20.3	Tabulation of Quantities		Sheet	1	4	1	4	
20.4	General Notes/Pay Item Notes		Sheet	1	4	1	4	
20.5	Project Layout		Sheet	0	0	0	0	
20.6	Plan Sheet		Sheet	6	4	6	24	
20.7	Typical Details		EA	1	2	1	2	Loop Placement
20.8	Guide Sign Worksheet(s)		EA	0	0		0	
20.9	Traffic Monitoring Site		EA	0	0		0	
20.10	Cross Sections		EA	0	0		0	
20.11	Special Service Point Details		EA	0	0		0	
20.12	Special Details		LS	1			0	
20.13	Interim Standards		LS	1	0		0	
Signing and Pavement Marking Plans Technical Subtotal						10	38	
20.14	Quality Assurance/Quality Control		LS	%	5%		2	
20.15	Supervision		LS	%	5%		2	
20. Signing and Pavement Marking Plans Total						10	42	

Project Activity 21: Signalization Analysis

Estimator:

SW 120 St Corridor Improvements - From W of SW 77 Ave to E of SW 74 Ave
TBD

Representing	Print Name	Signature / Date
FDOT District		
Choice Engineering		

NOTE: Signature Block is optional, per District preference

Task No.	Task	Units	No. of Units	Hours/ Units	Total Hours	Comments
21.1	Traffic Data Collection	LS	1	0	0	
21.2	Traffic Data Analysis	PI	0	0	0	
21.3	Signal Warrant Study	LS	1	0	0	
21.4	System Timings	LS	1	0	0	
21.5	Reference and Master Signalization Design File	PI	1	32	32	
21.6	Reference and Master Interconnect Communication Design File	LS	1	0	0	
21.7	Overhead Street Name Sign Design	EA	0	0	0	
21.8	Pole Elevation Analysis	LS	1	0	0	
21.9	Traffic Signal Operation Report	LS	1	0	0	
21.10	Quantities	LS	1	4	4	
21.11	Cost Estimate	LS	1	0	0	
21.12	Technical Special Provisions	LS	1	0	0	
21.13	Other Signalization Analysis	LS	1	0	0	Voltage Drop Calculations (6hrs) + Service Disconnect with FPL (6hrs)
Signalization Analysis Technical Subtotal					36	
21.14	Field Reviews	LS	1	5	5	1 Field Review
21.15	Technical Meetings	LS	1	8	8	Meetings are listed below
21.16	Quality Assurance/Quality Control	LS	%	5%	2	
21.17	Independent Peer Review	LS	%	0%	0	
21.18	Supervision	LS	%	5%	2	
Signalization Analysis Nontechnical Subtotal					17	

Project Activity 21: Signalization Analysis

21.19	Coordination	LS	%	5%	3	
21. Signalization Analysis Total					56	

Technical Meetings	Units	No of Units	Hours/ Unit	Total Hours	PM Attendance at Meeting Required?	Number
FDOT Traffic Operations	EA	0	0	0		0
FDOT Traffic Design	EA	0	0	0		0
Power Company (service point coordination)	EA	0	0	0		0
Maintaining Agency (cities, counties)	EA	2	1	2		0
Railroads	EA	0	0	0		0
Other Meetings	EA	0	0	0		0
Subtotal Technical Meetings				2	Subtotal Project Manager Meetings	0
Progress Meetings (if required by FDOT)	EA	0	0	0	<i>PM attendance at Progress Meetings is manually entered on General Task 3</i>	--
Phase Review Meetings	EA	3	2	6	<i>PM attendance at Phase Review Meetings is manually entered on General Task 3</i>	--
Total Meetings				8	Total Project Manager Meetings (carries to Tab 3)	0

Carries to 21.15

Carries to Tab 3

Project Activity 22: Signalization Plans

Estimator:

SW 120 St Corridor Improvements - From W of SW 77 Ave to E of SW 74 Ave
TBD

Representing	Print Name	Signature / Date
FDOT District		
Choice Engineering		

NOTE: Signature Block is optional, per District preference

Task No.	Task	Scale	Units	No of Units	Hours/ Unit	No. of Sheets	Total Hours	Comments
22.1	Key Sheet		Sheet	1	4	1	4	
22.2	Summary of Pay Items Including Designer Interface (TRNS+Port) Input		Sheet	1	4	1	4	
22.3	Tabulation of Quantities		Sheet	1	4	1	4	
22.4	General Notes/Pay Item Notes		Sheet	1	4	1	4	
22.5	Plan Sheet		Sheet	1	4	1	4	
22.6	Interconnect Plans		Sheet	0	0	0	0	
22.7	Traffic Monitoring Site		EA	0	0		0	
22.8	Guide Sign Worksheet		EA	0	0		0	
22.9	Special Details		EA	8	1	8	8	Ped Detection Inserts
22.10	Special Service Point Details		EA	0	0		0	
22.11	Mast Arm/Monotube Tabulation Sheet		PI	0	0		0	
22.12	Strain Pole Schedule		PI	0	0		0	
22.13	TCP Signal (Temporary)		EA	0	0		0	
22.14	Temporary Detection Sheet		PI	0	0		0	
22.15	Utility Conflict Sheet		Sheet	0	0	0	0	
22.16	Interim Standards		LS	1	0		0	
Signalization Plans Technical Subtotal						13	28	
22.17	Quality Assurance/Quality Control		LS	%	5%		1	
22.18	Supervision		LS	%	5%		1	
22. Signalization Plans Total						13	30	