

RESOLUTION NO. 2022-

A RESOLUTION OF THE VILLAGE OF PINECREST, FLORIDA, AUTHORIZING THE VILLAGE MANAGER TO ENTER INTO AN INTERLOCAL AGREEMENT WITH MIAMI-DADE TRANSPORTATION PLANNING ORGANIZATION ("TPO") FOR SW 82ND AVENUE COMPLETE STREET PLANNING PROJECT; PROVIDING FOR AN EFFECTIVE DATE.

WHEREAS, on-street parking was not allowed on Southwest 82nd Avenue; and

WHEREAS, on December 12, 2017, the Village Council heard a presentation to do on-street parking on Southwest 82nd Avenue through a complete street design approach, as presented by then Public Works Director Mark Spanioli.

WHEREAS, the Village applied for grant funding through the Transportation Planning Organization ("TPO") to pay for preparation of conceptual plans and preliminary design including intersection improvements.

BE IT RESOLVED BY THE VILLAGE COUNCIL OF THE VILLAGE OF PINECREST, FLORIDA, AS FOLLOWS:

Section 1. That the Village Manager is hereby authorized to enter into an interlocal agreement with Miami-Dade Transportation Planning Organization ("TPO") for SW 82nd Avenue Complete Street Planning Project.

Section 2. This resolution shall be effective immediately upon adoption.

PASSED AND ADOPTED this 1st day of November, 2022.

Joseph M. Corradino, Mayor

Attest:

Priscilla Torres, CMC
Village Clerk

Approved as to Form and Legal Sufficiency:

Mitchell Bierman
Village Attorney




Yocelyn Galiano, ICMA-CM
Village Manager
manager@pinecrest-fl.gov

MEMORANDUM
Office of the Village Manager

DATE: October 26, 2022

TO: The Honorable Mayor and Members of the Village Council

FROM: Yocelyn Galiano, ICMA-CM, Village Manager 

RE: Resolution Authorizing an Interlocal Agreement with Miami-Dade County TPO for Joint Funding of SW 82nd Avenue

The Interlocal Agreement with Miami-Dade County Transportation Planning Organization (TPO) provides a grant to share in the cost to complete the SW 82nd Avenue Complete Street Planning Project. Prior to 2017, SW 82nd Avenue from 120 Street to 124 Street was designated as a "No Parking Area" on the west side of the street. Following a request from adjacent commercial property owners, the Village Council directed that staff remove some of the "no parking" signs and develop a parking solution concept for the area.

Attached for your information is the preliminary conceptual plan that was developed by outside engineering consultants, Stantec, Inc. that were presented to the Village Council on December 12, 2017. During that meeting, the Village Manager indicated the Village would seek third party funding for implementation of the complete street solution on 82nd Avenue.

I hereby respectfully recommend the Village Council adopt the attached resolution authorizing the Village to enter into an Interlocal Agreement with Miami-Dade County TPO providing for a matching grant with an 80%/20% split for the Complete Street Planning of SW 82nd Avenue. The Village's obligation as its grant match is \$13,750 to be paid for out of the Transportation Fund.





Ponce de Leon Boulevard, Suite 900
Coral Gables, Florida 33134
Tel: (305) 445-2900

October 2, 2017

Village of Pinecrest
10800 Red Road
Pinecrest, Florida 33156

**Attention: Mr. Mark Spanioli, P.E.
Director of Public Works**

**Reference: Conceptual-Planning Design for SW 82 Ave from SW 120 Street to SW 124 Street
Village of Pinecrest, Florida**

Dear Mr. Spanioli:

We are pleased to present this proposal for professional engineering services. We appreciate the opportunity to be of service to the Village of Pinecrest.

SCOPE OF PROJECT:

The Village would like to study and implement improvements to this existing corridor. The existing right of way appears to be 70' with a centerline of paved road which is offset to the east. Both side of the existing right of way include a 5' sidewalk.

SCOPE OF SERVICES:

Our scope of work will include a field review of existing conditions; survey is to be provided by the Village in useable AutoCAD format. We will develop conceptual plans on existing conditions with aerials as a background reference. Each option will include one set of plans with layout and striping incorporated together. We will also include one roadway typical section per option and one rendering per option. The design shall incorporate various reconstruction options to include bicycle, pedestrian and on-street parking facilities. The roadway can be re-aligned if required and a shared use path will be reviewed as a possible option.

We will summarize the impacts to existing features and up to three (3) options will be provided. After conceptual plans are approved by Village staff, Stantec will provide the Village with color presentation boards and 3D renderings for presentation purposes. We will attend one (1) council meeting and conduct a brief presentation. An itemized cost estimate for each of the options will be provided to the Village along with the conceptual plans. Our timeline to complete the project after notice to proceed and receipt of survey is six (6) weeks.

Terms and Conditions:

All terms and conditions shall be per our continuing General Engineering Consulting Services contract dated October 1, 2016. Our fees shall be:



October 2, 2017
 Mr. Mark Spanioli, P.E.
 Director of Public Works
 Page 2 of 2

Design Phase (Lump Sum) \$25,896
Reproduction (As-needed) \$ 1,500

TOTAL: \$27,396

We are ready to begin working on this assignment upon your authorization to proceed. If acceptable to you, we will accept a signed copy of this form as your written authorization to proceed.

Thank you,

Stantec Consulting Services Inc.

Sean Compel, P.E., LEED AP
 Senior Associate
 Tel: 305-445-2900
 sean.compel@stantec.com

Village of Pinecrest

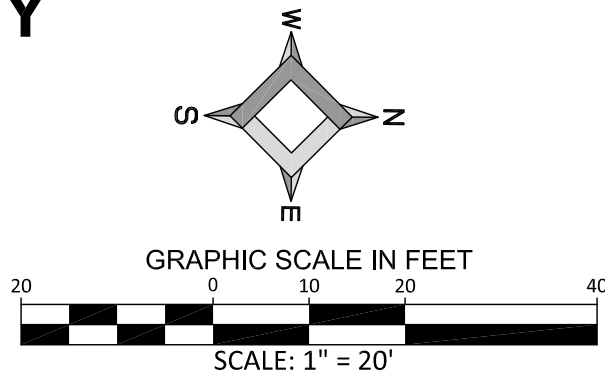
Approved by:

Signature

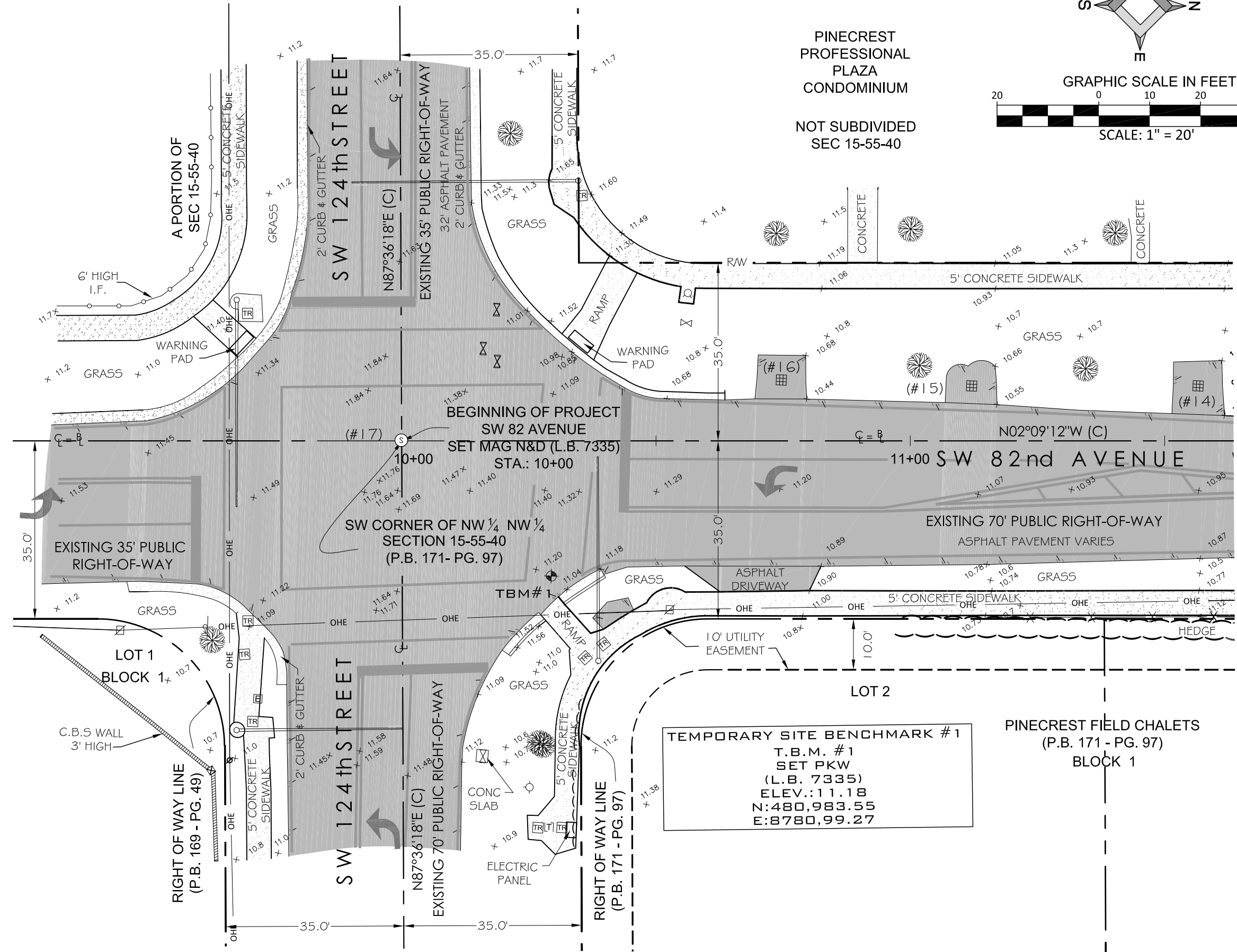
MARK SPANIOLI
 Print Name
 trans
 431.000

10/3/17
 Date

MAP OF TOPOGRAPHIC SURVEY



- LEGEND AND ABBREVIATIONS**
- = PALM TREE
 - = TREE
 - = ORNAMENTAL TREE
 - O.R.B. = OFFICIAL RECORDS BOOK
 - PG. = PAGE
 - ELEV. = ELEVATION
 - TYP. = TYPICAL
 - CATV. = CABLE TELEVISION
 - ELEC. = ELECTRIC
 - SPOT ELEVATION
 - CONC. = CONCRETE
 - C.B.S. = CONCRETE BLOCK STUCCO
 - C.L.F. = CHAIN LINK FENCE
 - W.F. = WOOD FENCE
 - M.F. = METAL FENCE
 - B.W.F. = BARBED WIRE FENCE
 - FF = FINISH FLOOR
 - (R) = RECORD
 - (C) = CALCULATED
 - (M) = MEASURE
 - LB = LICENSE BUSINESS
 - L = LENGTH
 - LA = CENTRAL ANGLE
 - TA = TANGENT
 - PT = POINT OF TANGENCY
 - PC = POINT OF CURVATURE
 - STA. = STATION
 - OLP = ORNAMENTAL LIGHT POLE
 - WLP = WOODEN LIGHT POLE
 - MLP = METAL LIGHT POLE
 - CLP = CONCRETE LIGHT POLE
 - R/W = RIGHT-OF-WAY
 - P.B. = PLAT BOOK
 - SECTION LINE
 - CENTERLINE
 - BASELINE
 - MONUMENT LINE
 - TRAFFIC SIGNAL BOX
 - TRAFFIC SIGNAL CABINET
 - BOLLARD
 - PEDESTRIAN SIGNAL
 - TRAFFIC SIGNAL MAST ARM
 - SIGN
 - CABLE TELEVISION BOX
 - LIGHT POLE
 - ELECTRIC BOX
 - UTILITY POLE
 - ELECTRIC TRANSFORMER
 - GUY ANCHOR
 - ELECTRIC MANHOLE
 - ELECTRIC METER
 - GAS VALVE
 - GAS UTILITY BOX
 - GAS MANHOLE
 - GAS TANK
 - GAS METER
 - COMMUNICATION BOX
 - COMMUNICATION MANHOLE
 - GARBAGE RECEPTACLE
 - HANDICAP PARKING SPACE
 - WATER METER
 - IRRIGATION VALVE
 - WATER VALVE
 - FIRE HYDRANT
 - WATER BOX
 - WATER CONNECTION
 - WATER MANHOLE
 - WATER TANK
 - WATER WELL
 - WATER MARKING FLAG
 - WATER MARKING SIGN
 - STORM MANHOLE
 - STORM METER
 - CATCH BASIN
 - TELEPHONE MANHOLE
 - TELEPHONE BOX
 - NEWSPAPER DISPENSER
 - MAILBOX
 - SANITARY MANHOLE
 - SANITARY BOX
 - SANITARY TANK
 - SANITARY LIFT STATION
 - GREASE TRAP MANHOLE
 - CLEANOUT
 - PARKING METER
 - FIBER OPTIC BOX
 - FIBER OPTIC MARKER SIGN
 - MONITORING WELL
 - FUEL TANK
 - UNKNOWN UTILITY BOX
 - UNKNOWN UTILITY METER
 - UNKNOWN UTILITY MANHOLE
 - UNKNOWN UTILITY VALVE
 - UNKNOWN UTILITY MARKER FLAG
 - SANITARY VALVE
 - RAILROAD SIGN
 - FLAGPOLE



PINECREST PROFESSIONAL PLAZA CONDOMINIUM

NOT SUBDIVIDED SEC 15-55-40

LONGITUDE SURVEYORS

7715 NW 48th STREET
SUITE 310
DORAL, FLORIDA
33166
PH: (305) 463-0912
FAX: (305) 513-5680
FLORIDA CERTIFICATE OF AUTHORIZATION
LB 7335

WWW.LONGITUDESURVEYORS.COM

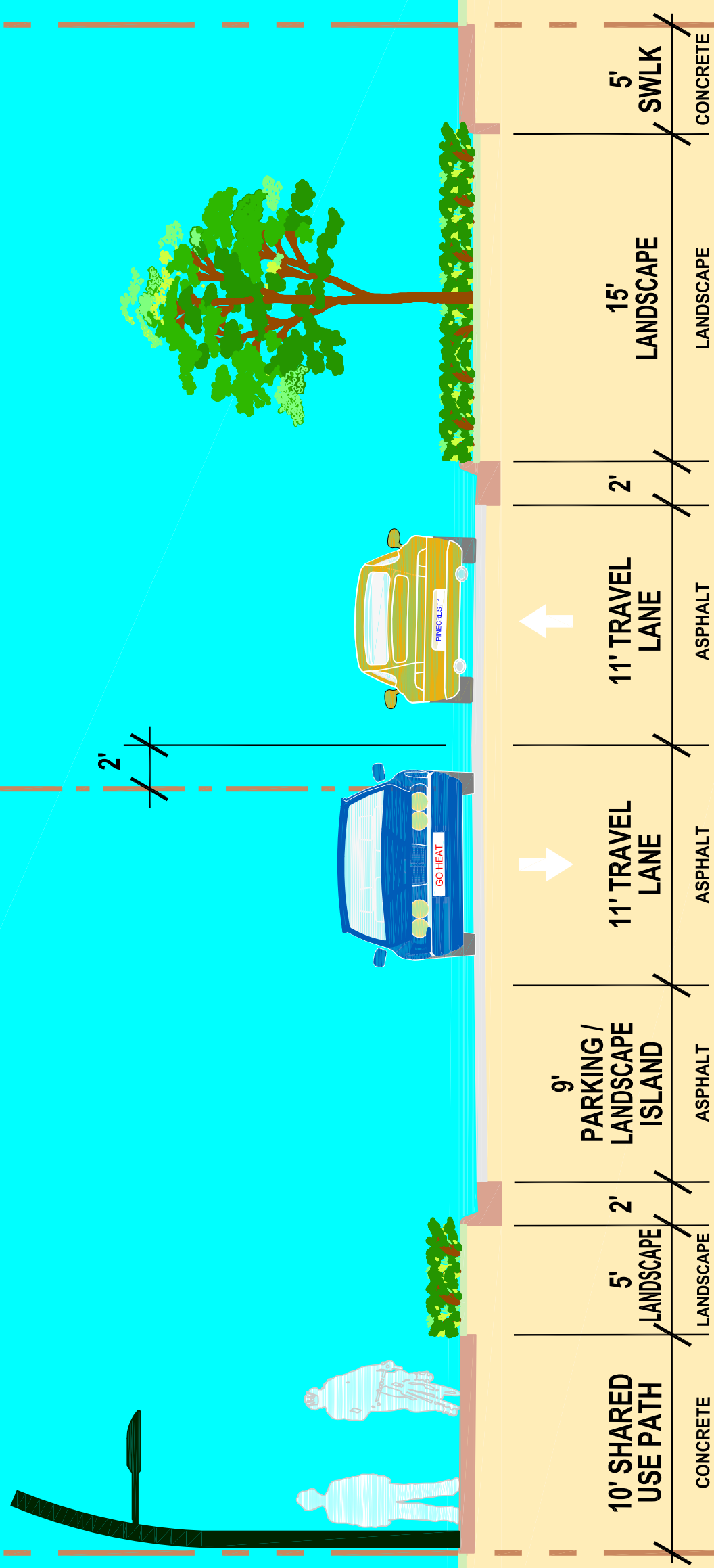
By:	Description
11-02-2017	Add Topographic Survey (Extending 50-feet into each leg of the intersection S.W. 124th Street and S.W. 82nd Av.)

Project Name:	VILLAGE OF PINECREST PUBLIC WORK DEPARTMENT SW 82 AVENUE FROM SW 120 STREET TO SW 124 STREET
Type of Project:	TOPOGRAPHIC SURVEY
Scale:	AS SHOWN
Drawn By:	ACS-SF
Checked By:	EMS
Managed By:	DR
Date:	Nov. 02, 2017
Project No.:	17340.0.01
	CTL-2

70' Right-of-Way (LOOKING NORTH)

35'

35'



SW 82nd Avenue (From SW 120 Street to SW 124 Street)

TYPICAL SECTION OPTION 3