

**RESOLUTION NO. 2024-**

**A RESOLUTION OF THE VILLAGE OF PINECREST, FLORIDA, APPROVING AND ACCEPTING DEDICATION BY RIGHT-OF-WAY MAINTENANCE MAP OF A PORTION OF SW 88<sup>TH</sup> STREET 900 FEET +/- WEST OF 57<sup>TH</sup> AVENUE BY OPERATION OF LAW IN ACCORDANCE WITH SECTION 95.361 , FLORIDA STATUTES; PROVIDING FOR IMPLEMENTATION; AND PROVIDING FOR AN EFFECTIVE DATE.**

WHEREAS, pursuant to Section 95.361, Florida Statutes, where it cannot be determined who constructed a roadway, but the roadway has been maintained by a municipality with public funds for the immediate preceding seven (7) years, the road shall be deemed to be dedicated to the public to the extent of the width that has been maintained by the Village of Pinecrest ("Village"); and

WHEREAS, the Village has maintained the portion of SW 88<sup>th</sup> Street identified in the attached Right-of-Way Maintenance Map (the "Right-of-Way Maintenance Map") located 900 feet +/- West of 57<sup>th</sup> Avenue ("Roadway") for more than seven (7) years; and

WHEREAS, pursuant to Section 95.361, Florida Statutes the dedication to the public vests all rights, title, easement and appurtenances in and to the Roadway in the Village upon the filing of the Right-of-Way Maintenance Map with the office of the Miami-Dade County Clerk of Courts; and

WHEREAS, the Village desires to approve and accept a dedication of the Roadway, by operation of law, as provided for in Section 95.361, Florida Statutes.

NOW, THEREFORE, BE IT RESOLVED BY THE VILLAGE COUNCIL OF THE VILLAGE OF PINECREST, FLORIDA, AS FOLLOWS:

Section 1. Recitals. That each of the above-stated recitals are hereby adopted, confirmed, and incorporated herein.

Section 2. Dedication Approved and Accepted. The Village Council of the Village of Pinecrest hereby approves and accepts, by operation of law, the dedication of Roadway, including those portions of SW 88<sup>th</sup> Street identified in the Right-of-Way Maintenance Map attached hereto as Exhibit "A."

Section 3. Implementation. The Village Mayor, Village Officials, and Village Clerk are authorized to execute any and all documentation and take all action necessary to certify the acceptance of the Roadway dedication, including execution and filing the Right-of-Way Map with Miami-Dade County, Florida, Clerk of Courts, and implement the purposes of this Resolution.

Section 3. Effective Date. This resolution shall take effect immediately upon adoption.

PASSED AND ADOPTED this 19th day of March, 2024.

---

Joseph M. Corradino, Mayor

Attest:

---

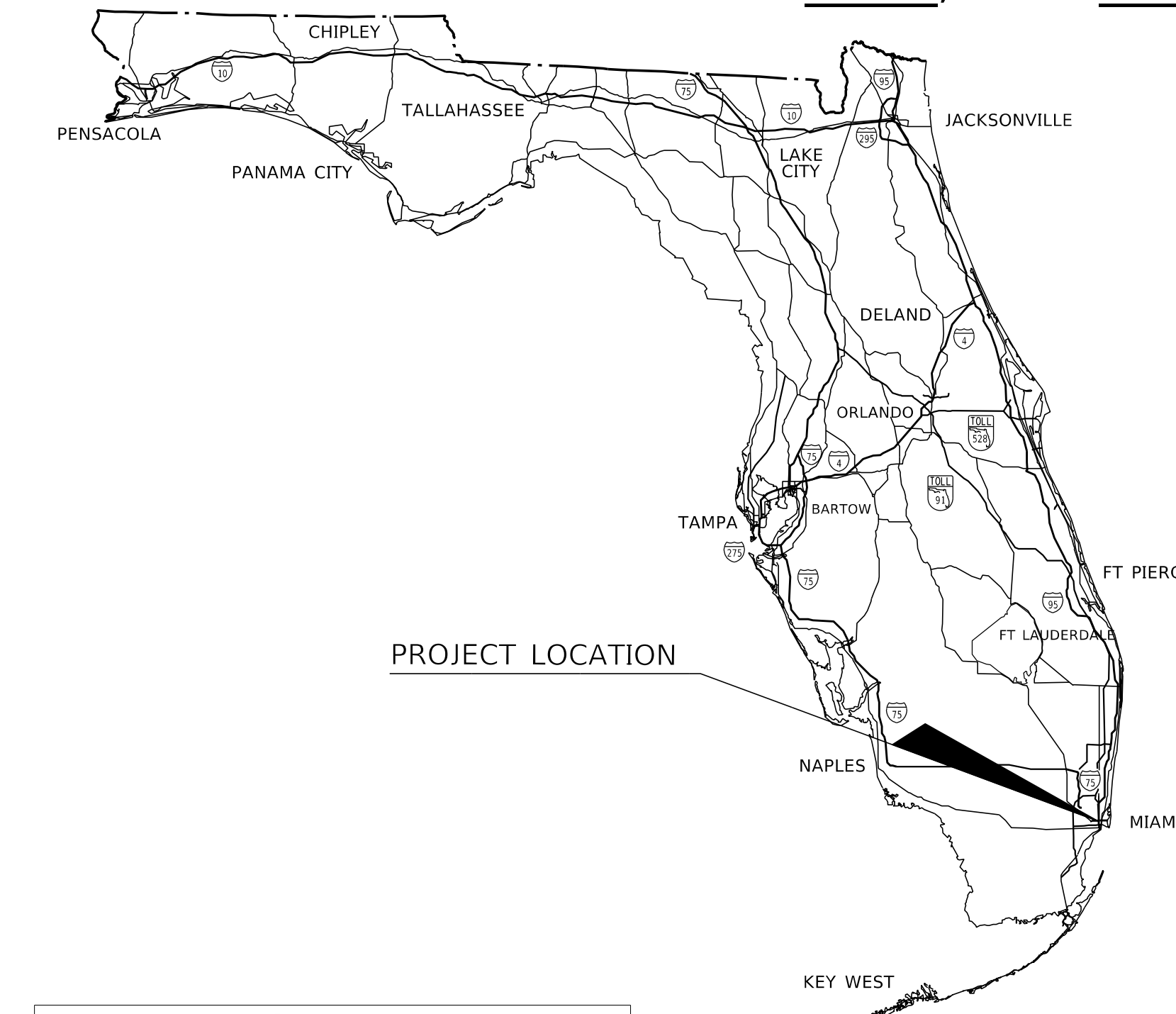
Priscilla Torres, MMC  
Village Clerk

Approved as to Form and Legal Sufficiency:

---

Mitchell Bierman  
Village Attorney

Consent Agenda



VILLAGE OF PINECREST  
MIAMI-DADE, FLORIDA

MAINTENANCE MAP  
SPECIFIC PURPOSE SURVEY

SW 88th STREET

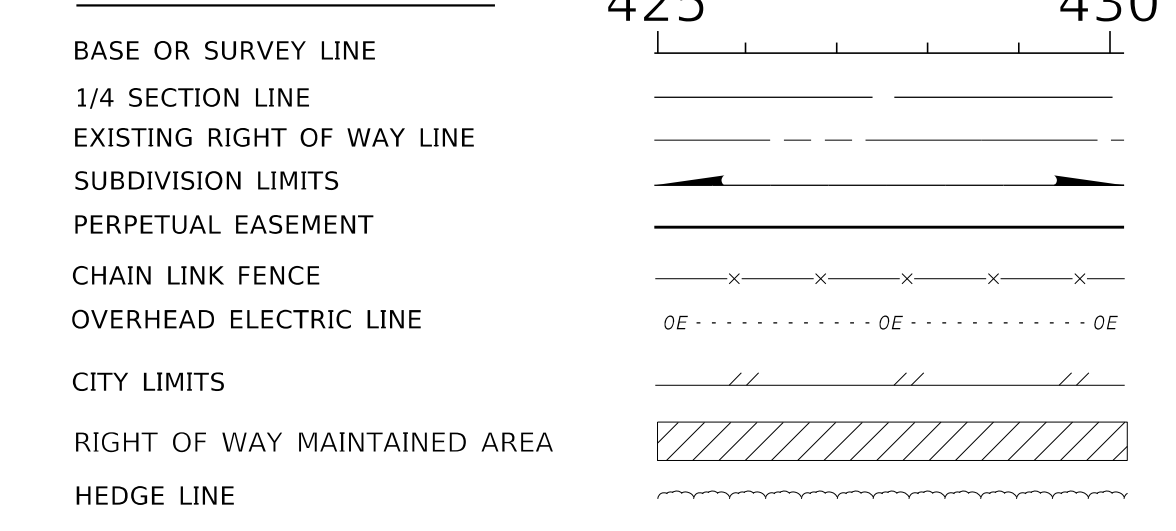
(THE WEST 300' OF THE EAST 1046'+/- )

TRAVERSING THROUGH  
SECTION 1, TOWNSHIP 55 SOUTH, RANGE 40 EAST.

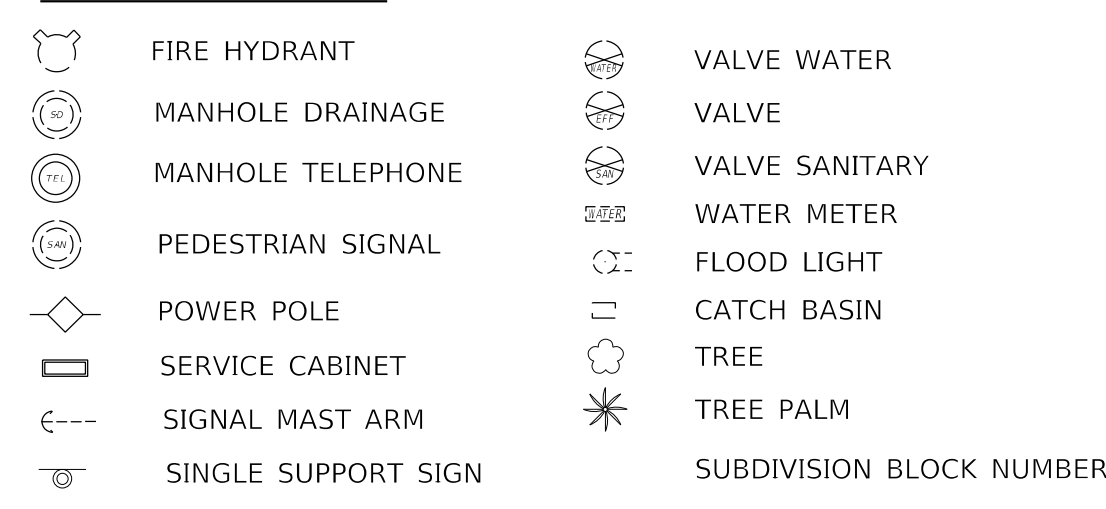
LEGEND

- |   |                                      |
|---|--------------------------------------|
| Δ = CURVE DELTA ANGLE                       | ORB = OFFICIAL RECORD BOOK           |
| A = ARC LENGTH                              | (P) = PLAT DATA                      |
| ASSOC. = ASSOCIATES                         | PB = PLAT BOOK                       |
| AVE. = AVENUE                               | PC = POINT OF CURVATURE              |
| B = BASELINE                                | PG. = PAGE                           |
| BLVD. = BOULEVARD                           | PLS = PROFESSIONAL LAND SURVEYOR     |
| C = CENTERLINE                              | POT = POINT ON TANGENT               |
| CO. = COMPANY                               | P.O.B. = POINT OF BEGINNING          |
| CONC. = CONCRETE                            | P.O.C. = POINT OF COMMENCEMENT       |
| (C) = CALCULATED                            | PROJ. = PROJECT                      |
| DB = DEED BOOK                              | PSM = PROFESSIONAL SURVEYOR & MAPPER |
| D = DEGREE OF CURVE                         | PT = POINT OF TANGENCY               |
| ENG. = DIAMETER                             | R = RADIUS                           |
| E = ENGINEERING                             | RD. = ROAD                           |
| EXIST. = EASTING                            | REF. = REFERENCE                     |
| FDOT = EXISTING                             | RPB = ROAD PLAT BOOK                 |
| FND. = FLORIDA DEPARTMENT OF TRANSPORTATION | RGE. = RANGE                         |
| HWY. = HIGHWAY                              | RT. = RIGHT                          |
| ID. = IDENTIFICATION                        | R/W = RIGHT OF WAY                   |
| L = LENGTH OF CURVE                         | SEC. = SECTION                       |
| LB = LICENSED BUSINESS                      | SQ. FT. = SQUARE FEET                |
| LS = LICENSED SURVEYOR                      | SR = STATE ROAD                      |
| LT. = LEFT                                  | ST. = STREET                         |
| MAINT. = MAINTENANCE                        | STA. = STATION                       |
| N = NOTHING                                 | T = TANGENT                          |
| NO. = NUMBER                                | TWP. = TOWNSHIP                      |
| NTS = NOT TO SCALE                          |                                      |

LINE TYPES



SYMBOLS



MAINTENANCE MAP CERTIFICATION

THIS IS TO CERTIFY THAT SHEETS NUMBERED 1 TO 2, INCLUSIVE, CONSTITUTES THE OFFICIAL MAINTENANCE MAP SHOWING LOCATION AND SURVEY FOR A PORTION OF SW 90TH STREET, VILLAGE OF PINECREST, FLORIDA

THE PROPERTY SHOWN HATCHED ON SAID MAP HAS BEEN VESTED IN THE VILLAGE OF PINECREST, FLORIDA PURSUANT TO THE PROVISIONS OF SECTION 95.361, FLORIDA STATUTES.

PLAT OF "THE AVOCADO LAND CO'S", RECORDED IN PLAT BOOK 2, AT PAGE 44, PUBLIC RECORDS OF MIAMI-DADE COUNTY, FLORIDA.

WARRANTY DEED, DATED MAY 3, 1978, RECORDED IN OFFICIAL RECORDS BOOK 10023, PAGE 2044, PUBLIC RECORDS OF MIAMI-DADE COUNTY FLORIDA.

SURVEYOR'S NOTES

BEARINGS AND COORDINATES ARE RELATIVE TO THE STATE PLANE COORDINATE SYSTEM, FLORIDA EAST COAST ZONE, NORTH AMERICAN DATUM (NAD) OF 1983/1990 ADJUSTMENT, A BEARING OF S 87°33'35" W HAS BEEN ESTABLISHED ALONG THE NORTH LINE OF THE NE 1/4 OF SECTION 1, TOWNSHIP 55 SOUTH, RANGE. 40 EAST.

LEGAL DESCRIPTION WAS FURNISHED BY THIS LAND SURVEYING FIRM.

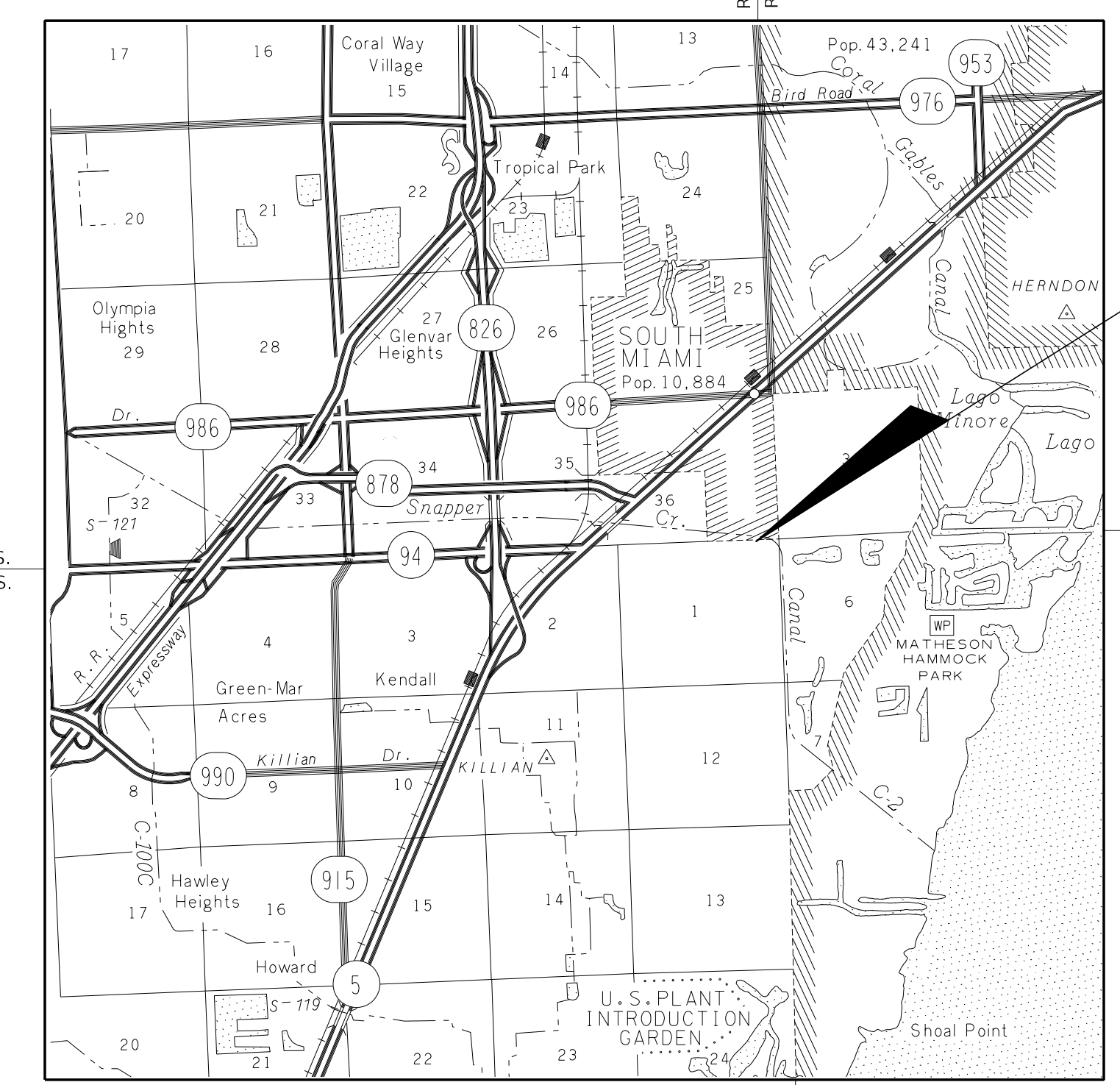
THIS INSTRUMENT WAS PREPARED FOR THE VILLAGE OF PINECREST.

SURVEYOR'S CERTIFICATION

THIS SURVEY WAS PERFORMED FOR THE SPECIFIC PURPOSE OF ESTABLISHING A SURVEY LINE AND LOCATING THE LIMITS OF MAINTAINED RIGHT OF WAY AS IDENTIFIED BY THE MAINTENANCE ENGINEER FOR THE TRANSPORTATION FACILITY SHOWN AND DEPICTED HEREON. I HEREBY CERTIFY THAT TO THE BEST OF MY KNOWLEDGE AND BELIEF THIS IS A TRUE, ACCURATE AND COMPLETE DEPICTION OF A FIELD SURVEY PERFORMED UNDER MY DIRECTION AND COMPLETED ON OCTOBER 25th, 2023. I FURTHER CERTIFY THAT SAID DRAWING IS IN COMPLIANCE WITH THE STANDARDS OF PRACTICE AS SET FORTH BY THE FLORIDA BOARD OF PROFESSIONAL SURVEYORS AND MAPPERS, IN CHAPTER 15-17 FLORIDA ADMINISTRATIVE CODE PURSUANT TO SECTION 472.027, FLORIDA STATUTES.

CARLOS E. ALONSO  
FLORIDA PROFESSIONAL SURVEYOR AND MAPPER NO. 6669  
13960 SW 47th STREET, MIAMI FLORIDA 33175  
DATE: \_\_\_\_\_

NOT VALID WITHOUT SIGNATURE AND ORIGINAL RAISED SEAL



(VICINITY MAP)

SCALE: 1"= 1 MILE  
MIAMI-DADE COUNTY, FLORIDA

THIS MAINTENANCE MAP WAS APPROVED BY RESOLUTION No. \_\_\_\_\_ PASSED AND ADOPTED BY THE VILLAGE OF PINECREST, FLORIDA, THIS \_\_\_\_\_ DAY OF \_\_\_\_\_, AS RECORDED IN OFFICIAL RECORD BOOK \_\_\_\_\_ PAGE \_\_\_\_\_ OF THE PUBLIC RECORDS OF MIAMI-DADE COUNTY, FLORIDA.

INDEX	
SHEET No	SHEET DESCRIPTION
1	COVER
2	DETAIL SHEET

REFERENCES

PLAT OF "THE AVOCADO LAND CO'S" RECORDED IN PLAT BOOK 2, PAGE 44 OF THE PUBLIC RECORDS OF MIAMI-DADE COUNTY, FLORIDA.

APPROVAL VILLAGE OF PINECREST

THIS IS TO CERTIFY THAT THE LIMITS OF THE ROADWAY AS SHOWN SHADED ON THIS MAP HAVE BEEN MAINTAINED CONTINUOUSLY FOR SEVEN (7) YEARS IMMEDIATELY PAST, WITHOUT INTERRUPTION OR DISTURBANCE FOR SW 90th STREET WHEREAS, THE ABOVE REFERENCED RIGHT-OF-WAY IS PART OF THE CITY STREET SYSTEM; AND, WHEREAS, THE ABOVE REFERENCED RIGHT-OF-WAY IS NOT CURRENTLY ON THE AD VALOREM TAX ROLLS FOR MIAMI-DADE COUNTY, FLORIDA AND, NOW THEREFORE, THIS MAP IS BEING RECORDED PURSUANT TO S.95.361 (3) (2022), TO INDICATED THAT TO SUCH STATUTE THAT THE RIGHT-OF-WAY SEGMENT DEEMED DEDICATED TO THE PUBLIC AND THAT SUCH DEDICATION ON VESTS ALL RIGHT, TITLE, EASEMENT, AND APPURTENANCES IN AND TO SUCH ROAD IN THE VILLAGE OF PINECREST, FLORIDA.

THE FOREGOING STATEMENTS AND MAP OF WHICH THIS CERTIFICATION IS PART IS HEREBY DULY CERTIFIED BY THE VILLAGE OF PINECREST, ACTING THROUGH ITS MAYOR, VILLAGE CLERK, AND DIRECTOR OF PUBLIC WORKS, IN EXECUTING THIS CERTIFICATION. HEREBY CERTIFY THAT THE FOREGOING STATEMENTS ARE TRUE AND CORRECT TO THE BEST OF THEIR RESPECTIVE PERSONAL KNOWLEDGE.

THIS MAINTENANCE MAP WAS APPROVED BY THE PUBLIC WORKS DIRECTOR OF THE VILLAGE OF PINECREST, FLORIDA, THIS \_\_\_\_\_ DAY OF \_\_\_\_\_, \_\_\_\_\_.

BY: \_\_\_\_\_ PUBLIC WORKS DIRECTOR  
DAVID J. MENDEZ, P.E.

IN WITNESS WHEREOF, WE HAVE HEREON TO SET OUR HANDS AND AFFIXED THE SEAL OF THE VILLAGE OF PINECREST, FLORIDA, THIS \_\_\_\_\_ DAY OF \_\_\_\_\_, \_\_\_\_\_.

ATTEST: \_\_\_\_\_ VILLAGE CLERK.  
PRISCILLA TORRES

BY: \_\_\_\_\_ MAYOR.  
JOSEPH M. CORRADINO

CLERK OF COURTS CERTIFICATION

FILED FOR RECORD THIS \_\_\_\_\_ DAY OF \_\_\_\_\_, A.D., 20\_\_ AT \_\_\_\_\_ : \_\_\_\_\_ M, IN BOOK \_\_\_\_\_ OF MAP PLATS, AT PAGE \_\_\_\_\_ OF THE PUBLIC RECORDS OF MIAMI-DADE COUNTY, FLORIDA. THIS ROAD MAINTENANCE MAP COMPLIES WITH THE LAWS OF THE STATE OF FLORIDA AND MIAMI-DADE COUNTY, FLORIDA.

JUAN FERNANDEZ-BARQUIN  
CLERK OF CIRCUIT COURT, MIAMI-DADE COUNTY, FLORIDA

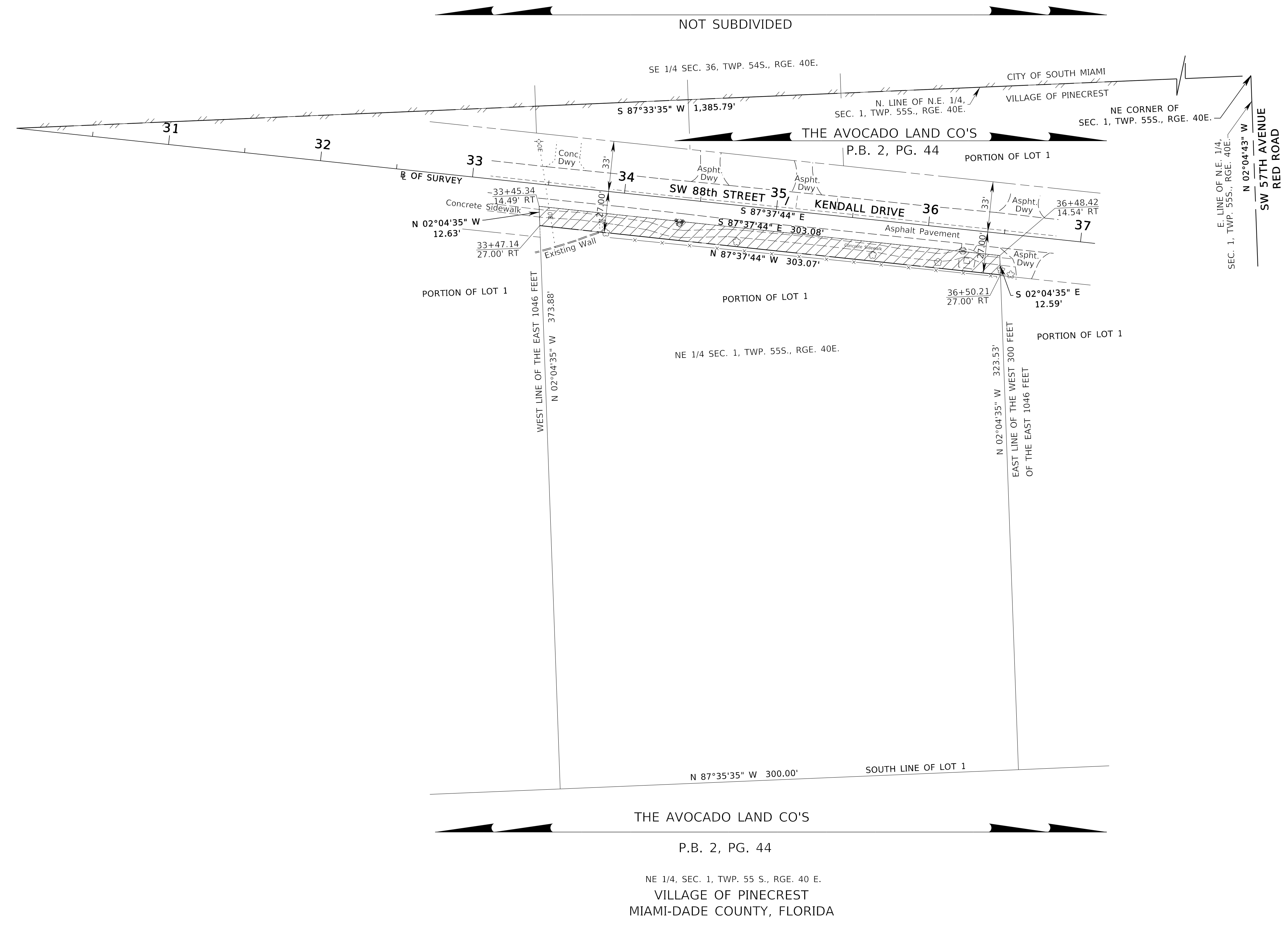
BY: \_\_\_\_\_ DEPUTY CLERK

COVER SHEET

SW 88th STREET / KENDALL DRIVE (900 FEET +/- WEST OF SW 57th AVENUE)

MAINTENANCE MAP	VILLAGE OF PINECREST SURVEYING AND MAPPING	REVISION	BY	DATE	REVISION	BY	DATE	BY	DATE	SUBMITTED BY:	DATE	FED. PROJ. N/A	SECTION N/A	MAPS PREPARED BY: MANUEL G. VERA AND ASSOCIATES 13960 SW 47th STREET, MIAMI FL. 33175 LB#2439	DATA SOURCE: SEE REFERENCES ABOVE SCALE: 1"=1 MILE
										APPROVED BY:	DATE	ROAD NO. SW 88th STREET (KENDALL DRIVE)	MIAMI-DADE COUNTY	MGV JOB NO. 23-698	SHEET 01 OF 02
										CHECKED	CEA	11-23			

SEC. 1, TWP. 55 S., RGE. 40 E.  
 SCALE: 1"=40'



**MAINTENANCE MAP**

VILLAGE OF PINECREST  
 SURVEYING AND MAPPING

REVISION	BY	DATE	REVISION	BY	DATE

BY	DATE	SUBMITTED BY:	DATE
SURVEYED	MGV	11-23	
DRAWN	CEA	11-23	
CHECKED	CEA	11-23	

FED. PROJ. N/A	SECTION N/A
ROAD NO. SW 88th STREET (KENDALL DRIVE)	MIAMI-DADE COUNTY

MAPS PREPARED BY: MANUEL G. VERA AND ASSOCIATES 13960 SW 47th STREET, MIAMI FL. 33175 LB#2439	DATA SOURCE: SEE REFERENCES ON COVER SHEET SCALE: 1"=40'
MGV JOB NO. 23-581	SHEET 02 OF 02

DETAIL SHEET  
 SW 88th STREET / KENDALL DRIVE (900 FEET +/- WEST OF SW 57th AVENUE)