

ORDINANCE NO. 2026-_____

AN ORDINANCE OF THE VILLAGE OF PINECREST, FLORIDA, AMENDING SECTION 36-4 OF THE VILLAGE CODE OF ORDINANCES TO CLARIFY AND CONFIRM (i) THE AUTHORIZATION TO PLACE, INSTALL, AND OPERATE SPEED DETECTION SYSTEMS ON ROADWAYS MAINTAINED AS SCHOOL ZONES, (ii) TRAFFIC ENFORCEMENT PROCEDURES WHEN SPEED DETECTION SYSTEMS ARE UTILIZED TO ENFORCE SCHOOL ZONE SPEED LIMIT VIOLATIONS, AND (iii) HEARING PROCEDURES RELATING TO SUCH SCHOOL ZONE SPEED LIMIT VIOLATIONS; PROVIDING FOR IMPLEMENTATION; PROVIDING FOR SEVERABILITY; PROVIDING FOR CONFLICTS; PROVIDING FOR CODIFICATION; AND PROVIDING FOR AN EFFECTIVE DATE.

WHEREAS, Section 316.008(9), Florida Statutes, provides that a municipality may enforce the applicable speed limit on a roadway properly maintained as a school zone pursuant to Section 316.1895, Florida Statutes:

- Within 30 minutes before through 30 minutes after the start of a regularly scheduled breakfast program;
- Within 30 minutes before through 30 minutes after the start of a regularly scheduled school session;
- During the entirety of a regularly scheduled school session; and
- Within 30 minutes before through 30 minutes after the end of a regularly scheduled school session

through the use of a speed detection system for the detection of speed and capture of photographs or videos for violations in excess of 10 miles per hour over the speed limit in force at the time of the violation; and

WHEREAS, Section 316.008(8)(c), Florida Statutes, provides that “[a] county or municipality must enact an ordinance in order to authorize the placement or installation of a speed detection system on a roadway maintained as a school zone...”; and

WHEREAS, the Village Council of the Village of Pinecrest (the “Village”) adopted Ordinance No. 2024-1 (“Ordinance”), creating Section 36-4 of the Village Code of Ordinances (the “Code”) in order to authorize the placement, installation, and operation of speed detection systems on roadways maintained as school zones, provide traffic enforcement procedures when speed detection systems are utilized to enforce school zone speed limit violations, and establish hearing procedures relating to such school zone speed limit violations; and

WHEREAS, during its consideration of the Ordinance, the Village Council considered a traffic study prepared by Redspeed Florida, LLC entitled “*School Zone Speed Report for the Village of Pinecrest*,” which was incorporated into the Ordinance together with other evidence supporting the installation of speed detection system at each school zone; and

WHEREAS, RedSpeed Florida, LLC has prepared a supplement to the original traffic study entitled “*Supplement to School Zone Speed Report for the Village of Pinecrest*,” clarifying that the traffic data collected in the original traffic study; and

WHEREAS, the Village Council desires to confirm, clarify, and amend Section 36-4 of the Village Code to clarify the specific school zone roadway boundaries which were deemed to constitute a heightened safety risk that warrant additional enforcement measures pursuant to Section 316.008(9), Florida Statutes; and

WHEREAS, the Village Council finds it to be in the best interest of the public, health, safety, and welfare of the citizens to adopt this Ordinance amending the Village’s Code.

NOW, THEREFORE, BE IT ORDAINED BY THE VILLAGE COUNCIL OF THE VILLAGE OF PINECREST, FLORIDA, AS FOLLOWS: ¹

¹ Coding: ~~Strikethrough~~ words are deletions to the existing words. Underlined words are additions to the existing words. Changes between first and second reading are indicated with **yellow highlight** and ~~double-strikethrough~~ or double underline.

Section 1. **Recitals.** That the above stated recitals are hereby adopted and confirmed.

Section 2. **Village Code Amended.** That Section 36-4, “Speed Detection Systems in School Zones,” of the Village Code of Ordinances, Village of Pinecrest, Florida, is hereby amended to read as follows: Exhibit “A” attached hereto and incorporated herein.

Section 3. **Severability.** The provisions of this Ordinance are declared to be severable and if any section, sentence, clause or phrase of this Ordinance shall for any reason be held to be invalid or unconstitutional, such decision shall not affect the validity of the remaining sections, sentences, clauses, and phrases of this Ordinance but they shall remain in effect, it being the legislative intent that this Ordinance shall stand notwithstanding the invalidity of any part.

Section 4. **Conflicts.** All Sections or parts of Sections of the Code of Ordinances, all ordinances or parts of ordinances, and all Resolutions, or parts of Resolutions, in conflict with this Ordinance are repealed to the extent of such conflict.

Section 5. **Codification.** It is the intention of the Village Council, and it is hereby ordained that the provisions of this Ordinance shall become and made a part of the Code of the Village of Pinecrest; that the sections of this Ordinance may be renumbered or re-lettered to accomplish such intention; and that the word "Ordinance" shall be changed to "Section" or other appropriate word.

Section 6. **Effective Date.** This Ordinance shall be effective immediately upon adoption on second reading and shall be applied retroactively to January 9, 2024.

EXHIBIT A

CHAPTER 36 – TRAFFIC

* * *

ARTICLE I. – IN GENERAL

* * *

Section 36-4. Speed Detection Systems in School Zones.

(a) *Purpose and Intent.* The Village desires to protect the public health, safety, and welfare of individuals traveling to and from school in the Village, especially students and their parents and/or legal guardians and school employees. Accordingly, the Village seeks to enforce School Zone speed limits by authorizing the placement and installation of speed detection systems on those School Zone roadways that constitute a heightened safety risk warranting additional enforcement measures pursuant to Section 316.008(9), Florida Statutes.

(b) *Definitions.* The following words, terms and phrases, when used in this section, shall have the meanings ascribed to them in this Section, except where the context clearly indicates a different meaning:

- (1) *Local Hearing Officer* means the Village Special Magistrate or such other qualified person designated by resolution of the Village Council to conduct hearings relating to notice of violations issued pursuant to Sections 316.1896 and 316.0083, Florida Statutes.
- (2) *Person* means a natural person, the registered owner or co-owner of a motor vehicle, or the person identified in an affidavit as having actual care, custody, or control of the motor vehicle at the time of a Violation.

- (3) *Petitioner* means a person who elects to request a hearing before the Local Hearing Officer for the purpose of determining whether a Violation under Section 316.1896, Florida Statutes, has occurred.
- (4) *School Zone* means a roadway located within the Village and maintained as a School Zone pursuant to Section 316.1895, Florida Statutes, that constitutes a heightened safety risk that warrants additional enforcement measures, as determined by the Village Council after consideration of traffic data and other relevant evidence.
- (5) *Speed Detection System* means a portable or fixed automated system used to detect a motor vehicle's speed using radar or LiDAR, and to capture a photograph or video of the rear of a motor vehicle that exceeds the speed limit in force at the time of the Violation.
- (6) *Traffic Infraction Enforcement Officer* means the police department employee or employees designated by the Village who meets the qualifications set forth under Section 316.640(5), and/or any other relevant statute, and is vested with the authority to enforce Violations.
- (7) *Violation* means a person that drives a motor vehicle on a roadway designated as a School Zone at a speed as follows:
 - (A) In excess of 10 miles per hour over the School Zone speed limit which occurs within 30 minutes before through 30 minutes after the start of a regularly scheduled breakfast program in violation of Section 316.1895, Florida Statutes.

(B) In excess of 10 miles per hour over the School Zone speed limit which occurs within 30 minutes before through 30 minutes after the start of a regularly scheduled school session in violation of Section 316.1895, Florida Statutes.

(C) In excess of 10 miles per hour over the posted speed limit during the entirety of a regularly scheduled school session in violation of Section 316.183, Florida Statutes.

(D) In excess of 10 miles per hour over the School Zone speed limit which occurs within 30 minutes before through 30 minutes after the end of a regularly scheduled school session in violation of Section 316.1895, Florida Statutes.

(c) *Findings.* After consideration of the traffic data provided in the “*School Zone Speed Report for the Village of Pinecrest*” prepared by RedSpeed Florida, LLC, as supplemented in the “*Supplement to the School Zone Speed Report for the Village of Pinecrest*” prepared by Redspeed Florida, LLC and the “*School Zone Speed Study Conducted by RedSpeed for Village of Pinecrest January 09th thru 11th, 2024,*” and other relevant evidence presented at the public hearing held on December 12, 2023, and **[DATE]**, the Village Council hereby finds that the following School Zones for the following schools where Speed Detection Systems are to be placed and installed constitute a heightened safety risk that warrant additional enforcement measures pursuant to Section 316.008(9), Florida Statutes:

(1) Gulliver Preparatory School

6575 N Kendall Drive

Pinecrest, FL 33156

a. SW 88th Street (Kendall Drive) from SW 65th Court to approximately 75 feet west of SW 63rd Court.

- b. SW 64th Court from SW 88th Street (Kendall Drive) to approximately 350 feet south of SW 88th Street (Kendall Drive).
- c. SW 67th Avenue (Ludlam Road) from approximately 575 feet north of SW 88th Street (Kendall Drive) to approximately 350 feet south of hypothetical SW 85th Street.

(2) Miami Palmetto Senior High School

7431 SW 120th Street

Pinecrest, Florida 33156

- a. SW 77th Avenue (Palmetto Road) from approximately SW 117th Street to approximately 500 feet south of SW 120th Street.
- b. SW 120th Street from approximately 530 feet east of SW 79th Avenue to approximately SW 73rd Avenue.
- c. SW 74th Avenue from approximately SW 117th Terrace to SW 120th Street.

(3) Palmetto Elementary School (Joint School Zone Roadways with Palmetto Middle School)

12401 SW 74th Avenue

Pinecrest, Florida 33156

- a. SW 124th Street (Chapman Field Drive) from approximately 230 feet west of SW 74th Court to approximately 300 feet west of SW 72nd Avenue.
- b. SW 73rd Avenue from SW 124th Street (Chapman Field Drive) to approximately 50 feet north of SW 129th Street.
- c. SW 128th Street from approximately 160 feet west of SW 74th Avenue to approximately 150 feet east of SW 73rd Avenue.

d. SW 74th Avenue from SW 124th Street (Chapman Field Drive) to approximately 50 feet north of SW 129th Street.

(4) Palmetto Middle School (Joint School Zone Roadways with Palmetto Elementary School)

7351 SW 128th Street

Pinecrest, Florida 33156

a. SW 124th Street (Chapman Field Drive) from approximately 230 feet west of SW 74th Court to approximately 300 feet west of SW 72nd Avenue.

b. SW 73rd Avenue from SW 124th Street (Chapman Field Drive) to approximately 50 feet north of SW 129th Street.

c. SW 128th Street from approximately 160 feet west of SW 74th Avenue to approximately 150 feet east of SW 73rd Avenue.

d. SW 74th Avenue from SW 124th Street (Chapman Field Drive) to approximately 50 feet north of SW 129th Street.

(5) Pinecrest Elementary School

10250 SW 57th Avenue

Pinecrest, Florida 33156

a. SW 57th Avenue (Red Road) from approximately 150 feet north of SW 102nd Street to approximately 300 feet north of SW 107th Street.

b. SW 104th Street from approximately 100 feet east of SW 59th Avenue to SW 57th Avenue (Red Road).

(6) Temple Beth Am

5950 North Kendall Drive

Pinecrest, Florida 33156

- a. SW 88th Street (Kendall Drive) from approximately 400 feet east of SW 61st Avenue to 5811 SW 88th Street (Kendall Drive).
- b. SW 60th Avenue from Kendall Drive to approximately 425 feet south of Kendall Drive.

(7) True North Classical Academy

7500 SW 120th Street

Pinecrest, Florida 33156

- a. SW 120th Street from approximately 530 feet east of SW 79th Avenue to approximately SW 73rd Avenue.
- b. SW 74th Court from approximately SW 123rd Terrace to SW 120th Street.

(d) *Placement and Installation of Speed Detection Systems.* Consistent with and pursuant to Chapter 316, Florida Statutes, the Village Council authorizes the placement, installation, and operation of automated Speed Detection Systems on School Zone roadways, as identified herein under subsection 36-4(c), to enforce Violations.

(e) *Notice of Violation, Designation of Local Hearing Officer, and Hearing Procedures.*

(1) Within thirty (30) days after a Violation, a notice of violation shall be sent by first class mail to the registered owner of the motor vehicle involved in the Violation. The notice of violation must include:

- a. The name and address of the vehicle owner;
- b. a photograph, video, or other recorded image showing the license plate of the motor vehicle;
- c. The make, model, and year of the vehicle;

- d. The date, time, and location of the Violation;
- e. Notice that the infraction charged is pursuant to this section;
- f. The maximum speed at which the motor vehicle was traveling within the School Zone;
- g. The speed limit within the School Zone at the time of the Violation;
- h. A statement that the owner has a right to review, in person or remotely, the photograph or video captured by the Speed Detection System(s) and the evidence of the speed of the motor vehicle detected by the Speed Detection System(s) that constitutes a rebuttable presumption that the motor vehicle was used in a Violation;
- i. Instructions as to the time and the place or website at which the photograph or video and evidence of speed detected captured by the Speed Detection System(s) may be examined and observed;
- j. Information that advises the Violator on the person's right to request a hearing and on all costs related thereto and a form used to request a hearing, or alternatively, a web address to a website that provides such information;
- k. Instructions on all methods of payment of the penalty;
- l. A statement specifying the remedies available under Section 318.14, Florida Statutes;
- m. A statement that the owner must pay a penalty in the amount provided under Section 318.18(3)(d), Florida Statutes, or furnish an affidavit that complies with Section 316.1896(8), Florida Statutes, within thirty (30) days in order

to avoid court fees, costs, and the issuance of a uniform traffic citation against the owner; and

- n. A signed statement by the Traffic Infraction Enforcement Officer that, based on inspection of recorded photographs or video captured by the Speed Detection System(s), the vehicle was involved in and was utilized to commit a Violation.

(2) Except as may be otherwise provided by resolution of the Village Council, the Village shall utilize its special magistrate pursuant to Section 2-141 of the Village Code to serve as the Local Hearing Officer(s) who shall preside over notice of violation hearings, as established by Section 316.1896, Florida Statutes, as amended.

(3) The Village Manager or the Village Manager's designee, shall designate a Traffic Infraction Enforcement Officer(s) to implement the authorizations contained under Section 316.1896(6), Florida Statutes, and, the Village Council shall, by resolution, designate a Village staff member to serve as the clerk to the Local Hearing Officer.

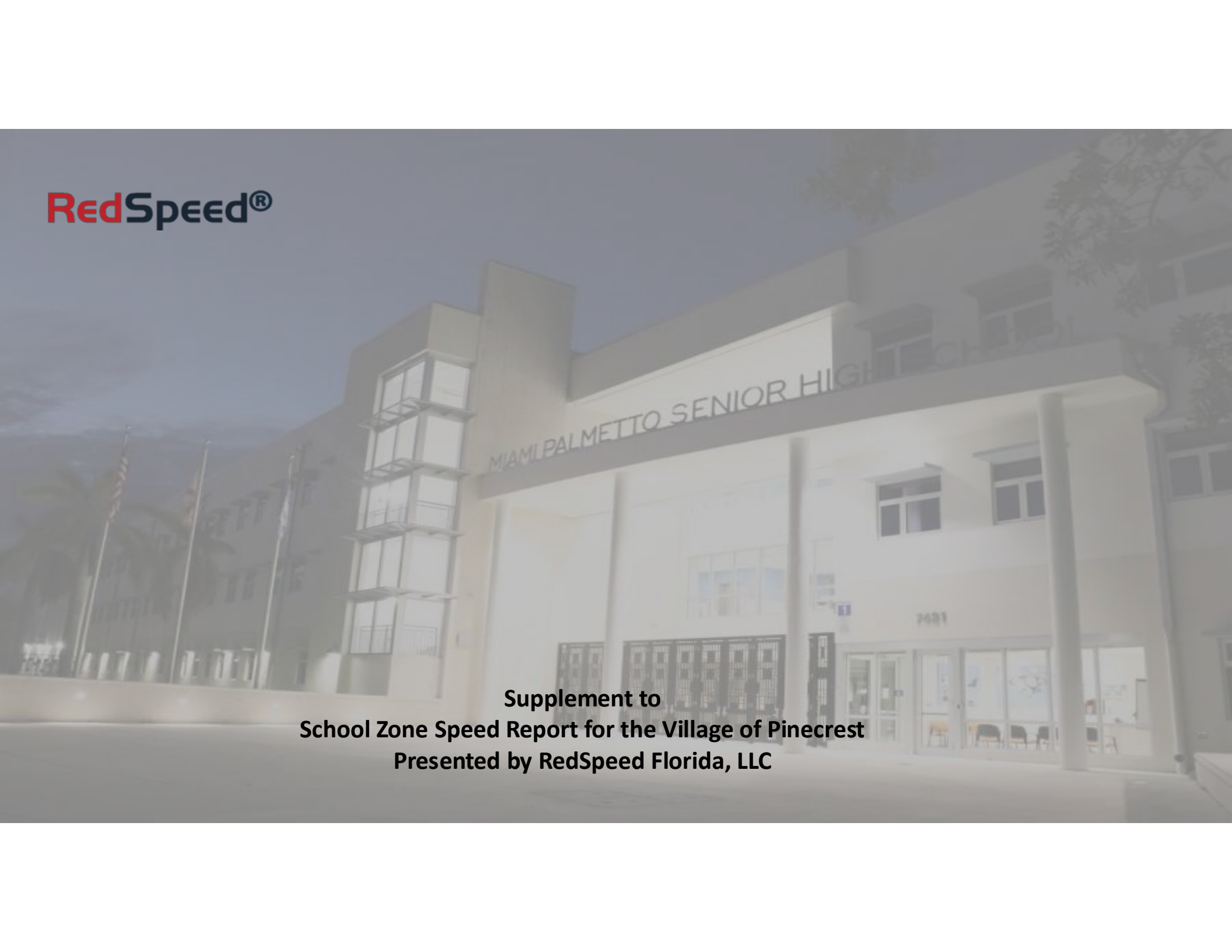
(4) Any Petitioner that elects to request a hearing shall be scheduled for a hearing by the clerk of the Local Hearing Officer, with notice of the hearing to be sent to the Petitioner by first-class mail. Upon receipt of the notice, the Petitioner may reschedule the hearing once by submitting a written request to reschedule to the clerk of the Local Hearing Officer, at least five calendar days before the day of the originally scheduled hearing. The Petitioner may cancel his or her appearance before the Local Hearing Officer by paying the penalty assessed by Section 316.1896(2), Florida Statutes, as amended, plus the administrative costs established under Section 316.0083(5)(c), Florida Statutes, before the start of the hearing.

(5) All testimony at the hearing shall be under oath and shall be recorded. The Local Hearing Officer shall take testimony from a Traffic Infraction Enforcement Officer and the Petitioner, and may take testimony from others. The Local Hearing Officer must review the photograph or video captured by the Speed Detection System and the evidence of the speed of the motor vehicle detected by the Speed Detection System. Formal rules of evidence do not apply, but due process shall be observed and govern the proceedings.

(6) At the conclusion of the hearing, the Local Hearing Officer must determine whether a Violation has occurred, in which case the Local Hearing Officer shall uphold or dismiss the Violation. The Local Hearing Officer shall issue a final administrative order including the determination and, if the notice of the violation is upheld, must require the Petitioner to pay the penalty assessed under Section 316.18(3)(d), Florida Statutes, as amended, and may also require the Petitioner to pay the Village's costs, not to exceed the amount established under Section 316.0083(5)(e), Florida Statutes. The final administrative order shall be mailed to the Petitioner by first-class mail.

(7) An aggrieved party may appeal a final administrative order consistent with the process provided under Chapter 162, Florida Statutes.

(f) *Supplemental Authority.* The provisions of this Section supplement the enforcement of Sections 316.1895 and 316.183, Florida Statutes, by law enforcement officers and does not prohibit law enforcement officers from issuing uniform traffic citations for violations of Sections 316.1895 or 316.183.

The background of the slide is a photograph of the Miami Palmetto Senior High School building. The building is a large, multi-story structure with a modern architectural style, featuring a prominent entrance with columns and a sign that reads "MIAMI PALMETTO SENIOR HIGH SCHOOL". The image is slightly faded and has a dark overlay to make the text stand out.

**Supplement to
School Zone Speed Report for the Village of Pinecrest
Presented by RedSpeed Florida, LLC**

Traffic Studies Demonstrate a Safety Need at Village of Pincrest Schools

- RedSpeed traffic studies demonstrated daily drivers exceeding the posted speed at *Pincrest* area schools.
- RedSpeed systems typically reduce speeding by 60-90% over the first year of implementation.
- Only RedSpeed offers integrated ALPR (Flock or vendor city's choice) with all camera systems.

<u>Schools Studied</u>	<u>Street</u>	<u>Violators</u>
Gulliver Preparatory School	SW 64 th Ct	548
Gulliver Preparatory School	SW 88 th St	8,662
Palmetto Elementary School and Palmetto Middle School (Joint School Zone)	Chapman Field Dr	1,361
Palmetto Elementary School and Palmetto Middle School (Joint School Zone)	SW 73 rd Ave	1,492
Palmetto Elementary School and Palmetto Middle School (Joint School Zone)	SW 74 th Ave	1,326
Palmetto Elementary School and Palmetto Middle School (Joint School Zone)	SW 128 th St	1,401
Palmetto Senior High School	Palmetto Rd	4,597
Palmetto Senior High School	SW 74 th Ave	259
Palmetto Senior High School	SW 120 th St	805
Pincrest Elementary School	SW 57 th Ave	2,425
Pincrest Elementary School	SW 104 th St	5,193
Temple Beth Am	SW 60 th Ave	981
Temple Beth Am	SW 88 th St	6,134
True North Classical Academy	SW 74 th Ct	307
True North Classical Academy	SW 120 th St	807

RedSpeed®



School Zone Speed Study





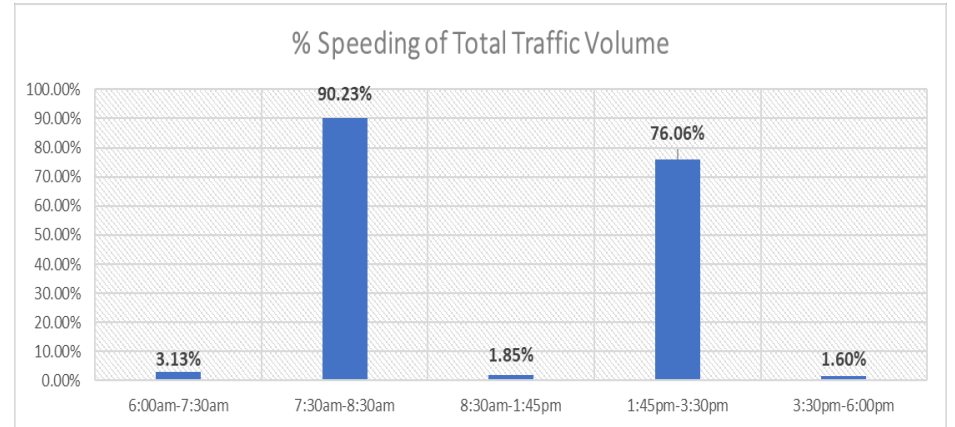
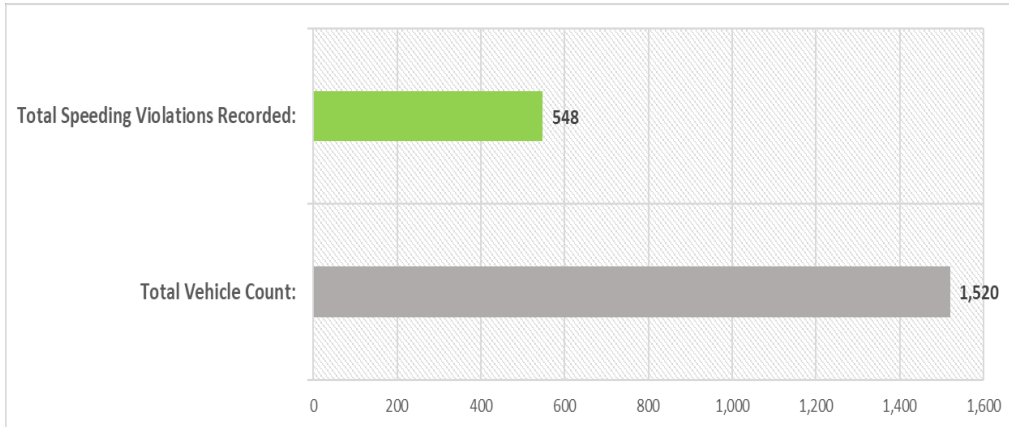
RedSpeed Florida, LLC (RedSpeed) conducted speed studies at **Gulliver Preparatory School** on **SW 64th Ct NB and SB** during the periods and times listed below.

This report was completed given the speed and time limit parameters of:

- School Zone Speed Limit: **15 MPH**
- Regular Zone Speed Limit: **35 MPH**

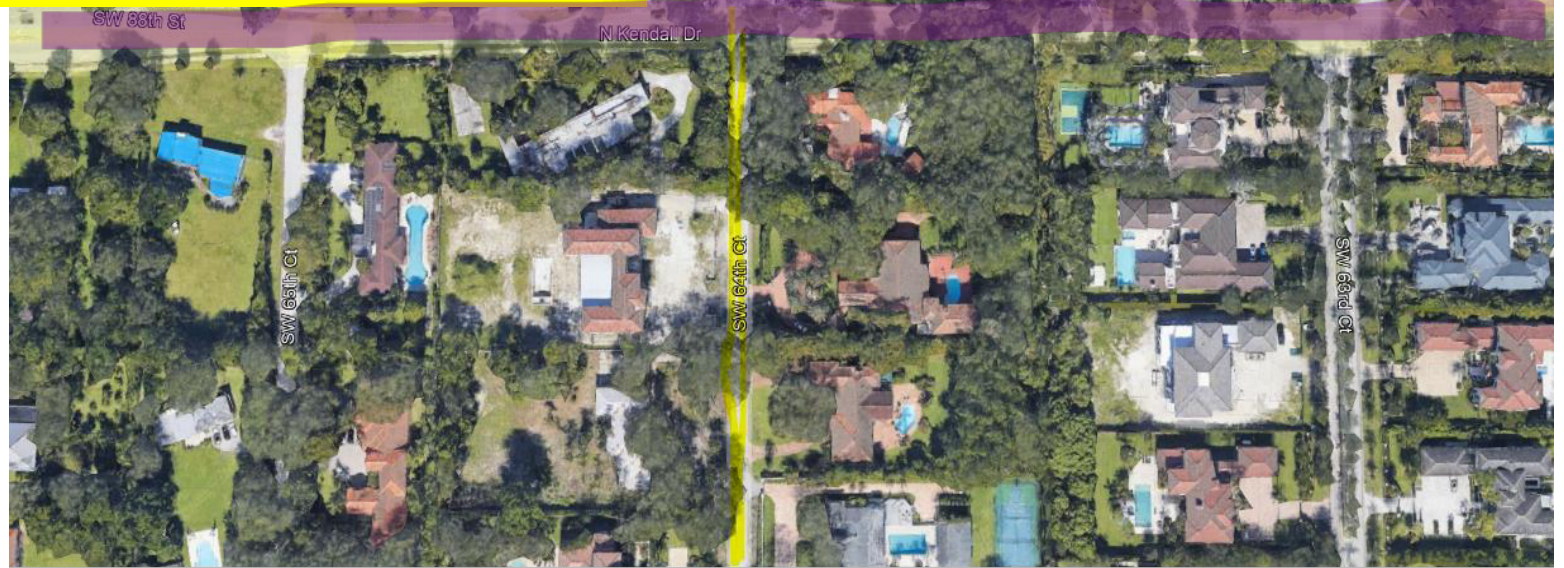
Speeding is defined as any recorded speed 1MPH over the school zone speed limit and 6MPH over the regular speed limit.

Date	6:00 AM – 7:30 AM			7:30 AM - 8:30 AM			8:30 AM - 1:45 PM			1:45 - 3:30 PM			3:30 PM – 6:00 PM		
	Vehicle Count	# of Violators	% Speeding	Vehicle Count	# of Violators	% Speeding	Vehicle Count	# of Violators	% Speeding	Vehicle Count	# of Violators	% Speeding	Vehicle Count	# of Violators	% Speeding
9/26/2023 - 10/2/2023	96	3	3.13%	430	388	90.23%	432	8	1.85%	188	143	76.06%	374	6	1.60%





School Zone Speed Study





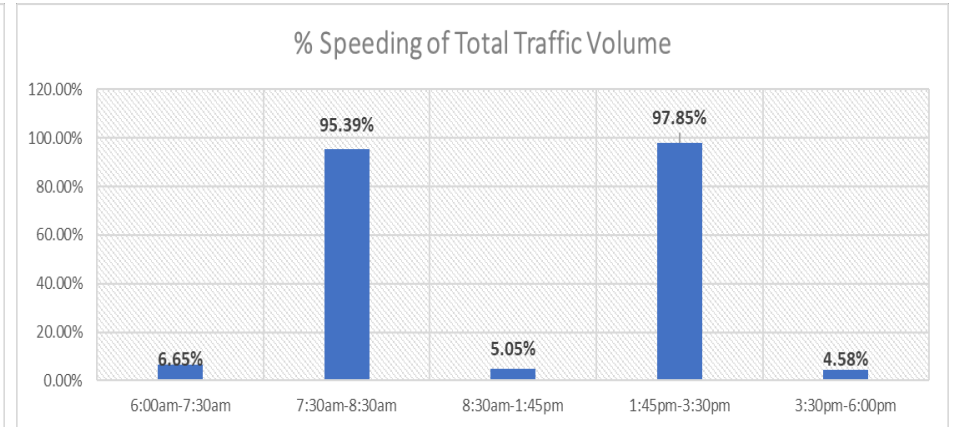
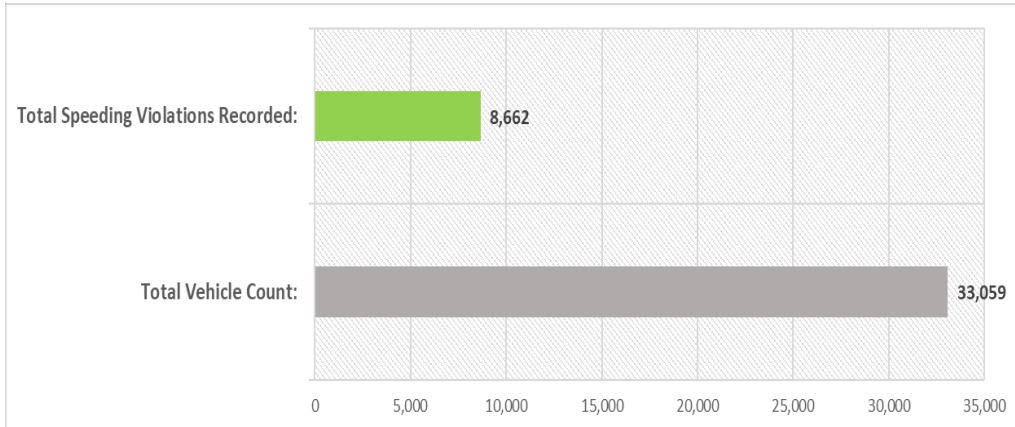
RedSpeed Florida, LLC (RedSpeed) conducted speed studies at **Gulliver Preparatory School** on **SW 88th St EB and WB** during the periods and times listed below.

This report was completed given the speed and time limit parameters of:

- School Zone Speed Limit: **15 MPH**
- Regular Zone Speed Limit: **30 MPH**

Speeding is defined as any recorded speed 1MPH over the school zone speed limit and 6MPH over the regular speed limit.

Date	6:00 AM – 7:30 AM			7:30 AM - 8:30 AM			8:30 AM - 1:45 PM			1:45 - 3:30 PM			3:30 PM – 6:00 PM		
	Vehicle Count	# of Violators	% Speeding	Vehicle Count	# of Violators	% Speeding	Vehicle Count	# of Violators	% Speeding	Vehicle Count	# of Violators	% Speeding	Vehicle Count	# of Violators	% Speeding
9/26/2023 - 10/2/2023	2,753	183	6.65%	2,517	2,401	95.39%	14,084	711	5.05%	5,081	4,972	97.85%	8,624	395	4.58%



RedSpeed®

School Zone Speed Study





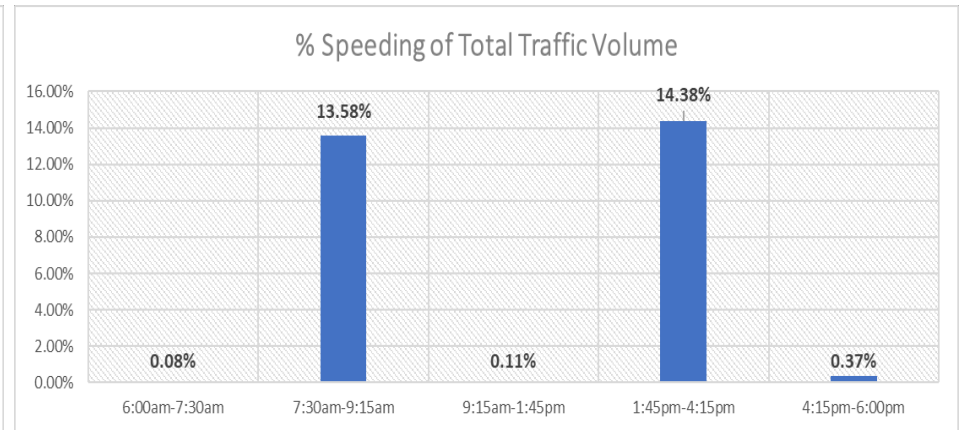
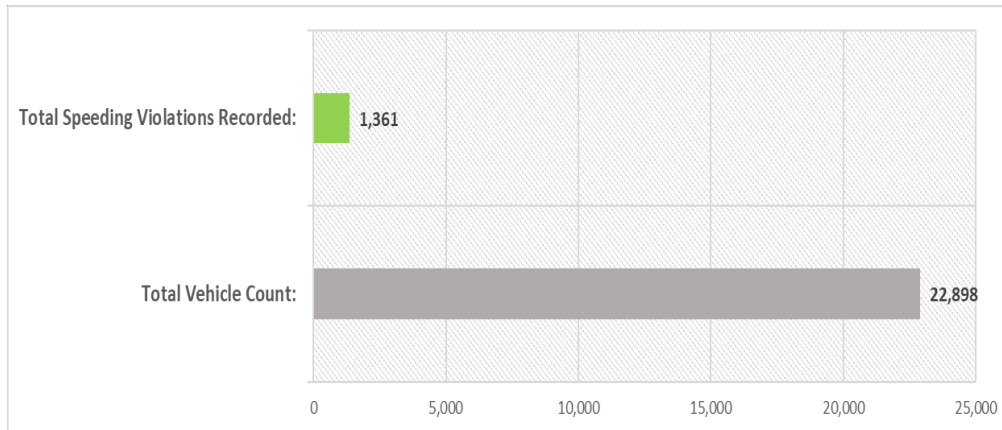
RedSpeed Florida, LLC (RedSpeed) conducted a 5-day speed study at Palmetto Elementary School and Palmetto Middle School (Joint School Zone) on Chapman Field Dr E/B and W/B during the periods and times listed below.

This report was completed given the speed and time limit parameters of:

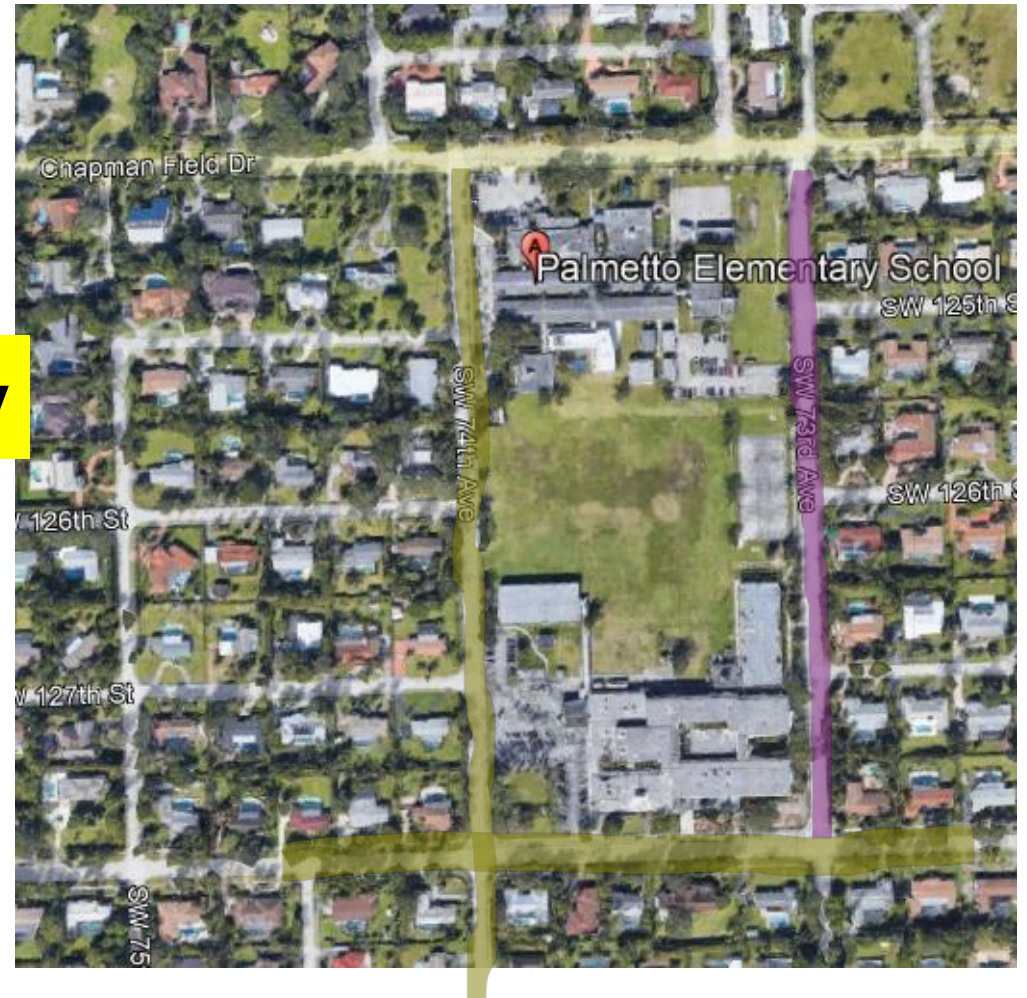
- School Zone Speed Limit: **15 MPH**
- Regular Zone Speed Limit: **35 MPH**

Speeding is defined as any recorded speed 1MPH over the school zone speed limit and 6MPH over the regular speed limit.

Date	6:00 AM – 7:30 AM			7:30 AM - 9:15 AM			9:15 AM - 1:45 PM			1:45 - 4:15 PM			4:15 PM – 6:00 PM		
	Vehicle Count	# of Violators	% Speeding	Vehicle Count	# of Violators	% Speeding	Vehicle Count	# of Violators	% Speeding	Vehicle Count	# of Violators	% Speeding	Vehicle Count	# of Violators	% Speeding
9/26/2023 - 10/2/2023	2,604	2	0.08%	3645	495	13.58%	7,320	8	0.11%	5,861	843	14.38%	3,468	13	0.37%



School Zone Speed Study





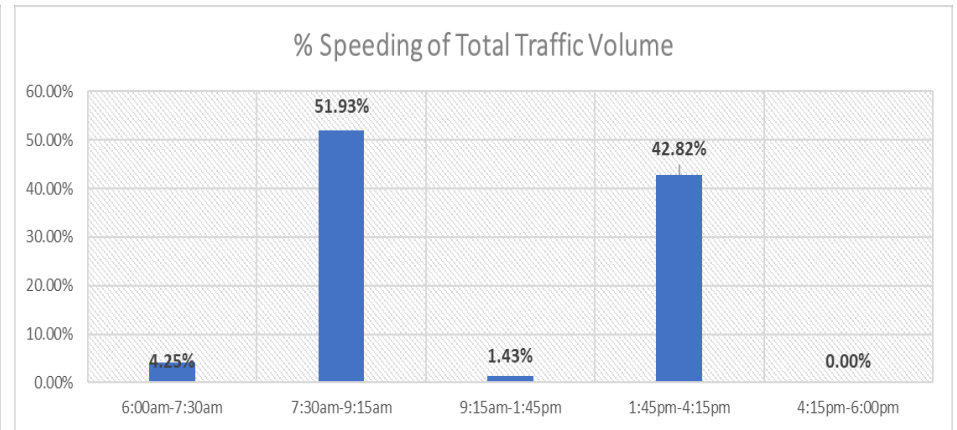
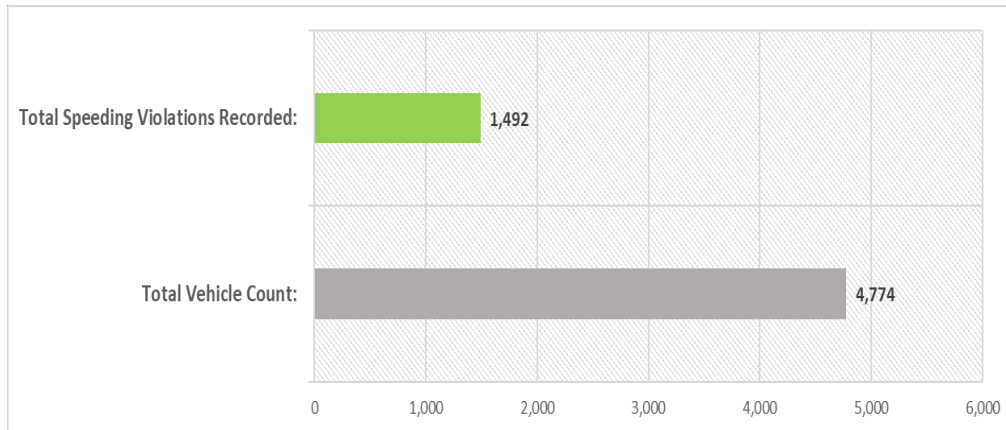
RedSpeed Florida, LLC (RedSpeed) conducted a 5-day speed study at **Palmetto Elementary School and Palmetto Middle School (Joint School Zone)** on **SW 73rd Ave N/B and S/B** during the periods and times listed below.

This report was completed given the speed and time limit parameters of:

- ☐ School Zone Speed Limit: **15 MPH**
- ☐ Regular Zone Speed Limit: **30 MPH**

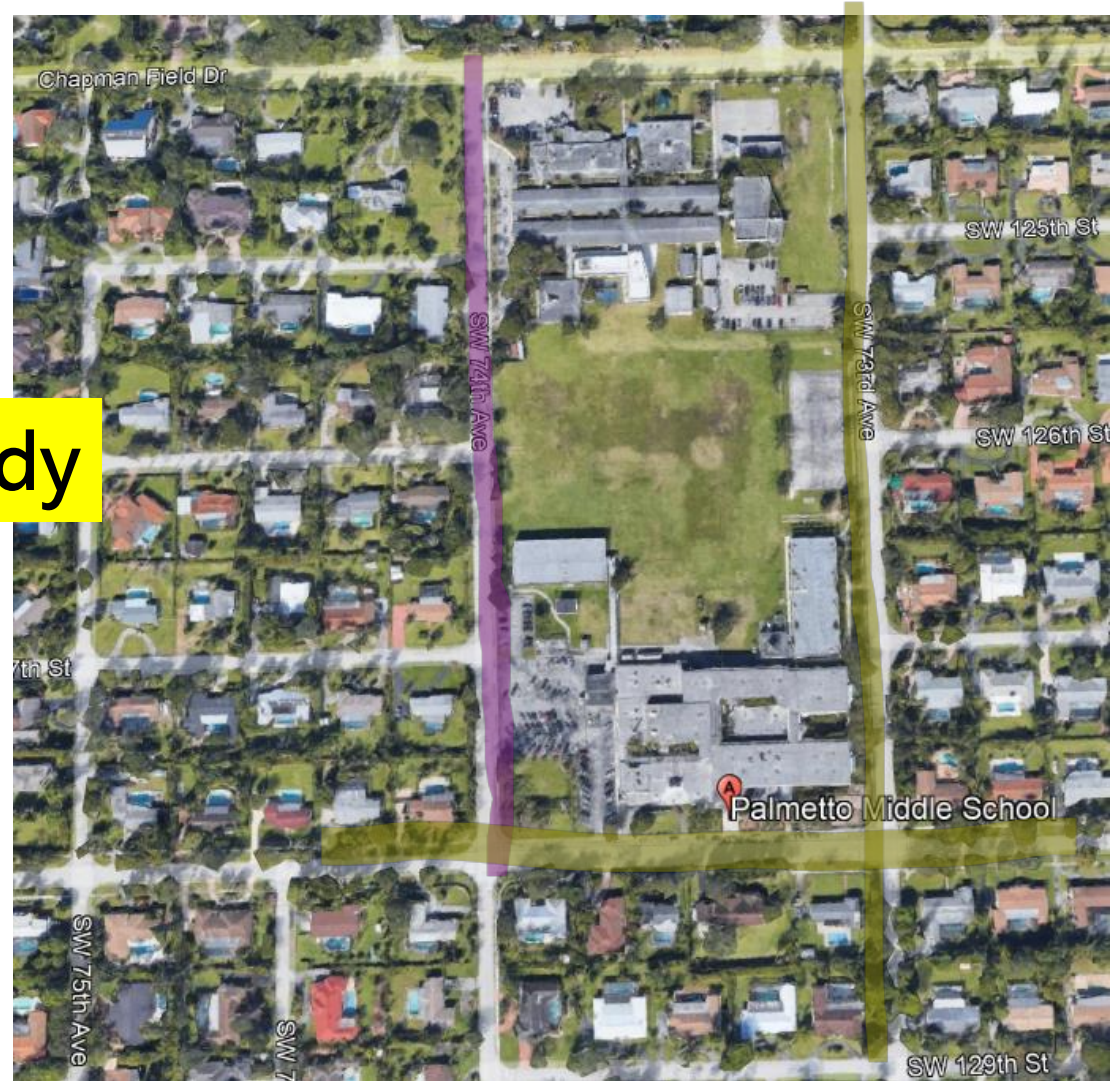
Speeding is defined as any recorded speed 1MPH over the school zone speed limit and 6MPH over the regular speed limit.

Date	6:00 AM – 7:30 AM			7:30 AM - 9:15 AM			9:15 AM - 1:45 PM			1:45 - 4:15 PM			4:15 PM – 6:00 PM		
	Vehicle Count	# of Violators	% Speeding	Vehicle Count	# of Violators	% Speeding	Vehicle Count	# of Violators	% Speeding	Vehicle Count	# of Violators	% Speeding	Vehicle Count	# of Violators	% Speeding
9/26/2023 - 10/2/2023	541	23	4.25%	1,271	660	51.93%	489	7	1.43%	1,873	802	42.82%	600	0	0.00%





School Zone Speed Study





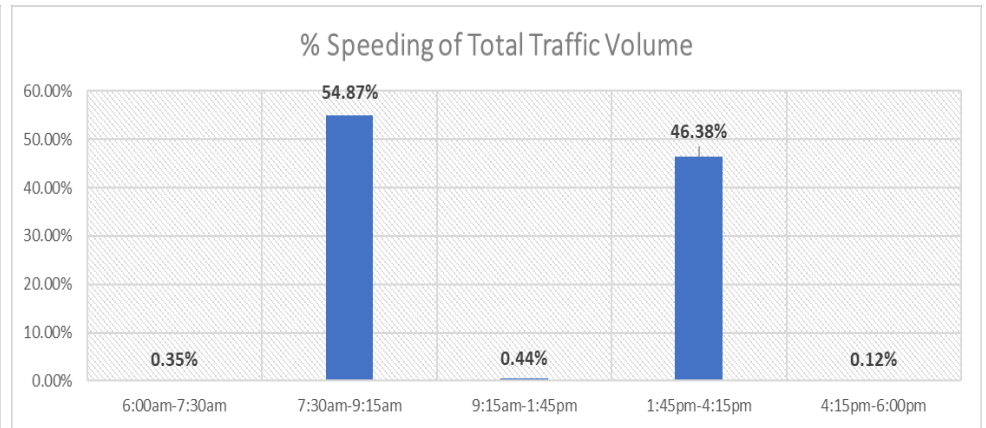
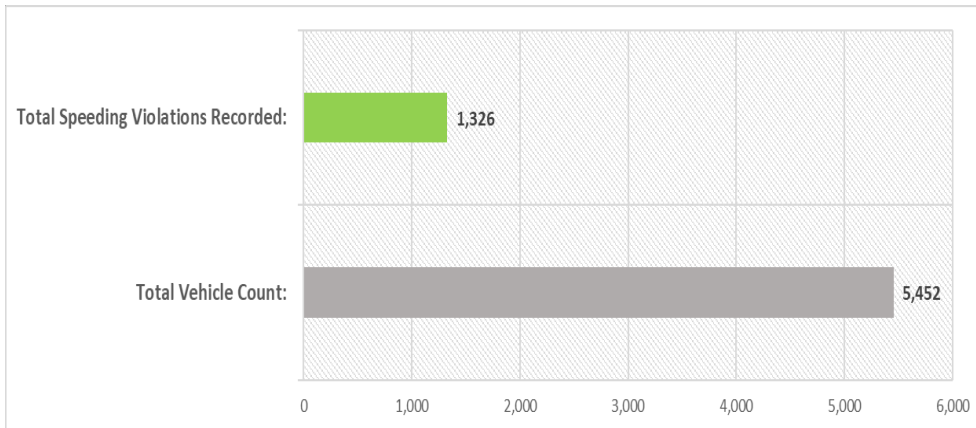
RedSpeed Florida, LLC (RedSpeed) conducted a 5-day speed study at **Palmetto Elementary School and Palmetto Middle School (Joint School Zone)** on **SW 74th Ave N/B and S/B** during the periods and times listed below.

This report was completed given the speed and time limit parameters of:

- School Zone Speed Limit: **15 MPH**
- Regular Zone Speed Limit: **30 MPH**

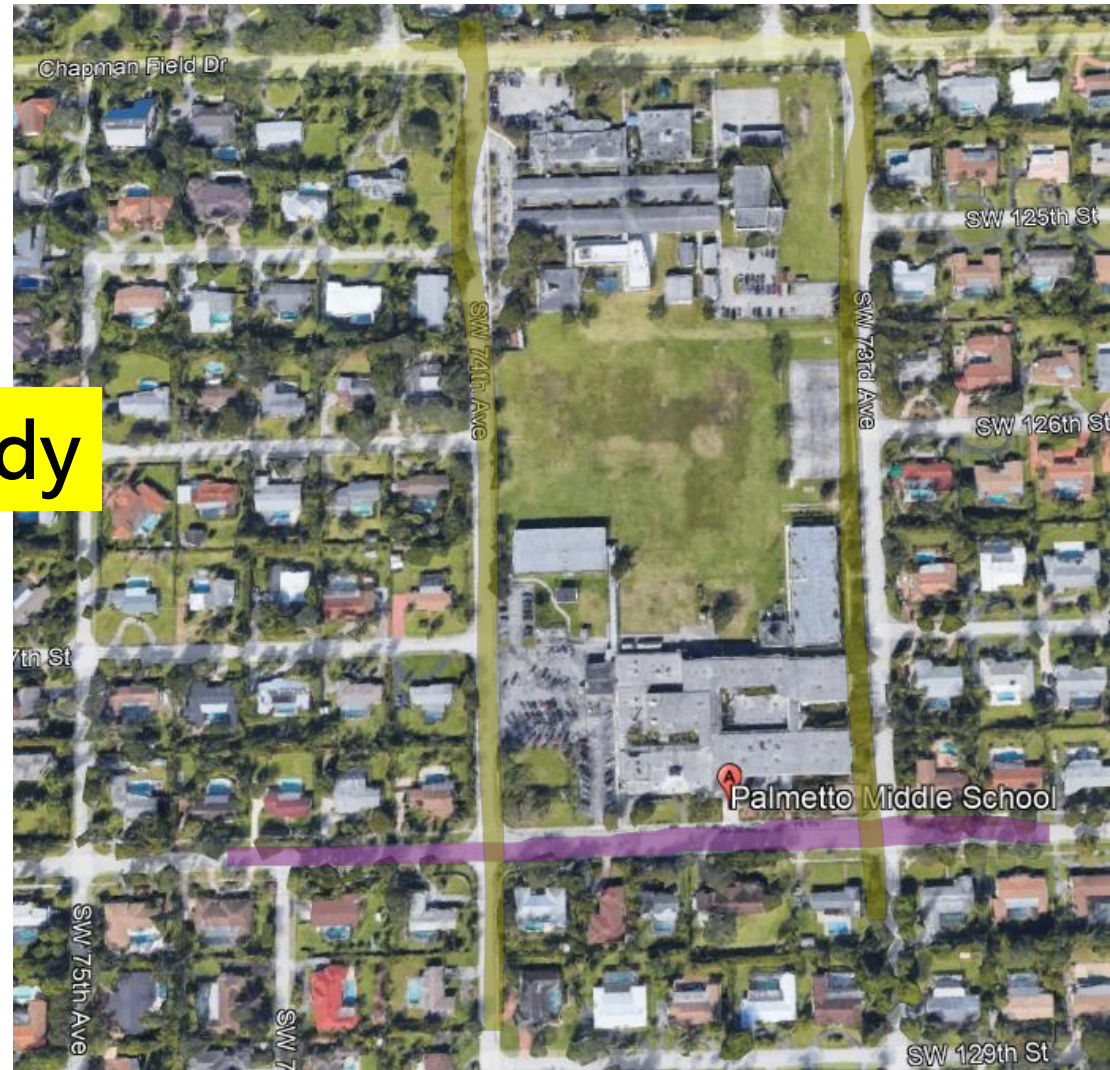
Speeding is defined as exceeding posted speed limit of 15 MPH over the school zone speed limit and 30 MPH over the regular zone speed limit.

Date	6:00 AM – 7:30 AM			7:30 AM - 9:15 AM			9:15 AM - 1:45 PM			1:45 - 4:15 PM			4:15 PM – 6:00 PM		
	Vehicle Count	# of Violators	% Speeding	Vehicle Count	# of Violators	% Speeding	Vehicle Count	# of Violators	% Speeding	Vehicle Count	# of Violators	% Speeding	Vehicle Count	# of Violators	% Speeding
9/26/2023 - 10/2/2023	1,422	5	0.35%	1,817	997	54.87%	676	3	0.44%	690	320	46.38%	847	1	0.12%





School Zone Speed Study



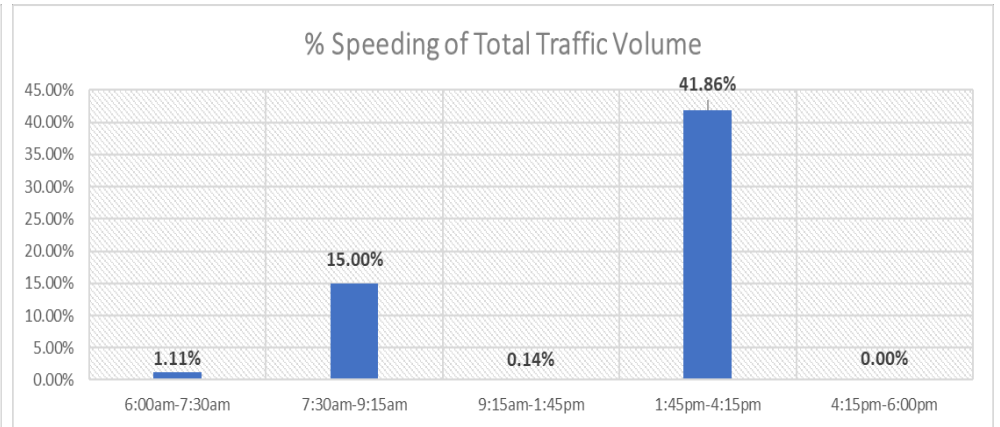
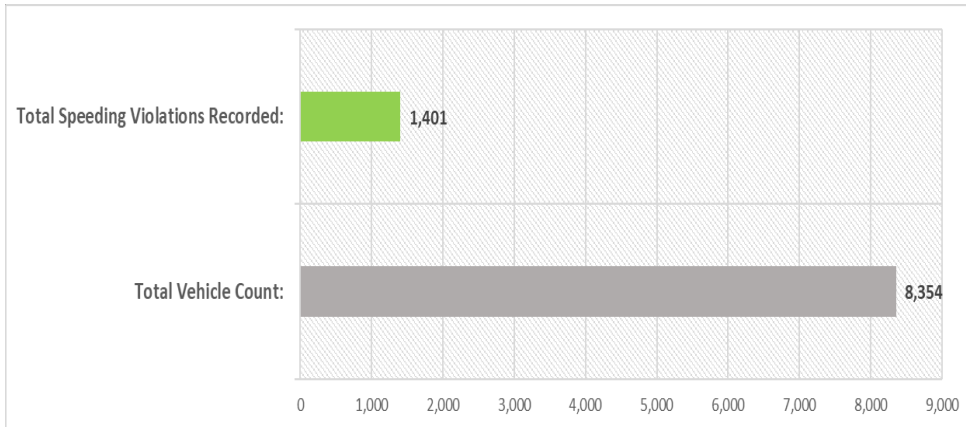


RedSpeed Florida, LLC (RedSpeed) conducted a 5-day speed study at **Palmetto Elementary School and Palmetto Middle School (Joint School Zone)** on **SW 128th St E/B and W/B** during the periods and times listed below.

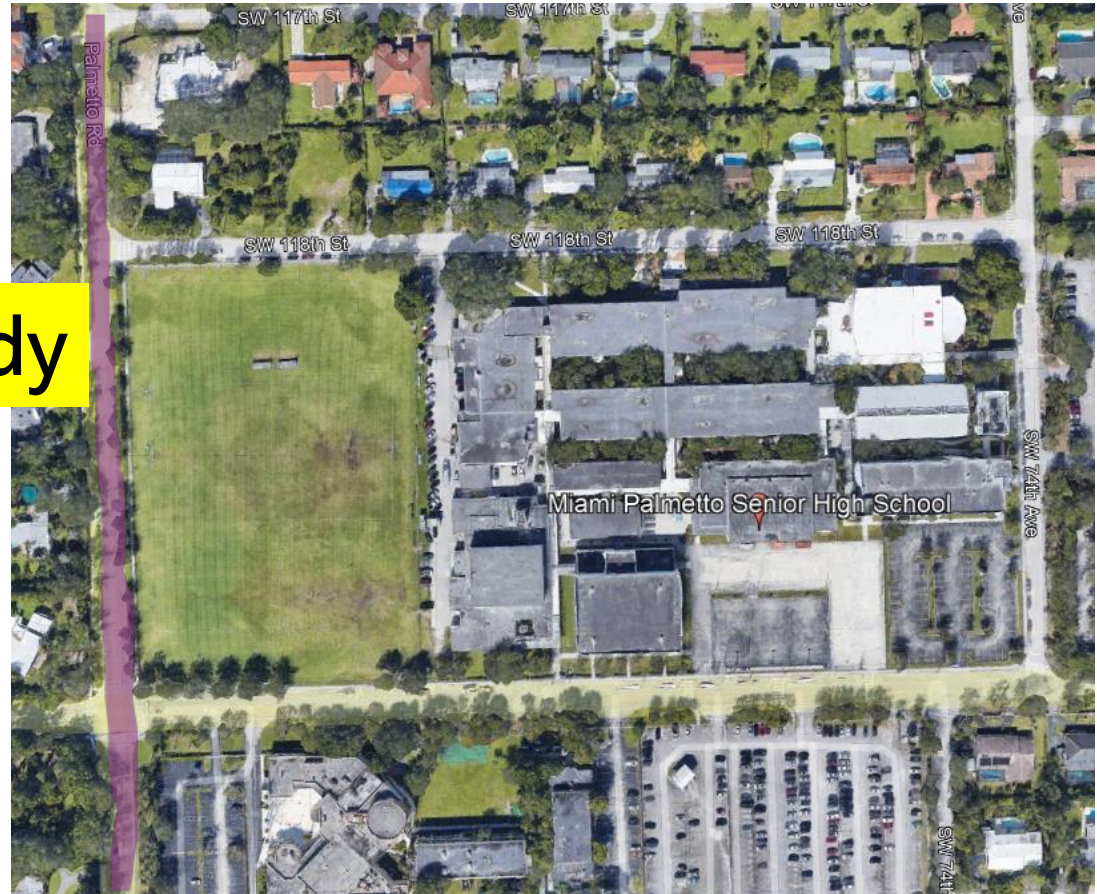
This report was completed given the speed and time limit parameters of:

- School Zone Speed Limit: **15 MPH**
- Regular Zone Speed Limit: **35 MPH**

Date	6:00 AM – 7:30 AM			7:30 AM - 9:15 AM			9:15 AM - 1:45 PM			1:45 - 4:15 PM			4:15 PM – 6:00 PM		
	Vehicle Count	# of Violators	% Speeding	Vehicle Count	# of Violators	% Speeding	Vehicle Count	# of Violators	% Speeding	Vehicle Count	# of Violators	% Speeding	Vehicle Count	# of Violators	% Speeding
9/26/2023 - 10/2/2023	540	6	1.11%	2,914	437	15.00%	1,428	2	0.14%	2,284	956	41.86%	1,188	0	0.00%



School Zone Speed Study





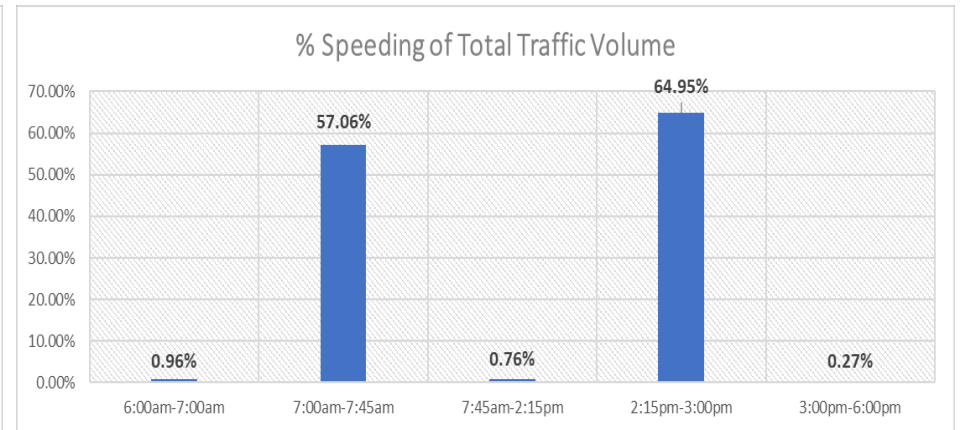
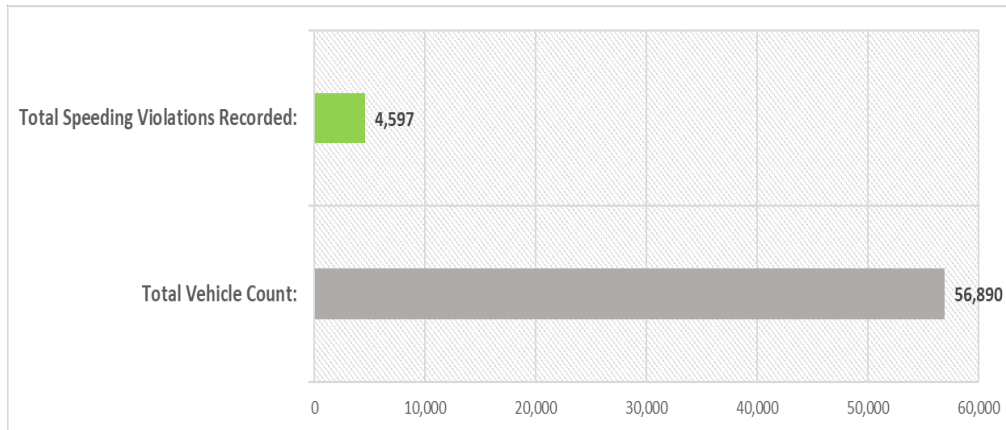
RedSpeed Florida, LLC (RedSpeed) conducted a 5-day speed study at Miami Palmetto Senior High School on Palmetto Rd N/B & S/B during the periods and times listed below.

This report was completed given the speed and time limit parameters of:

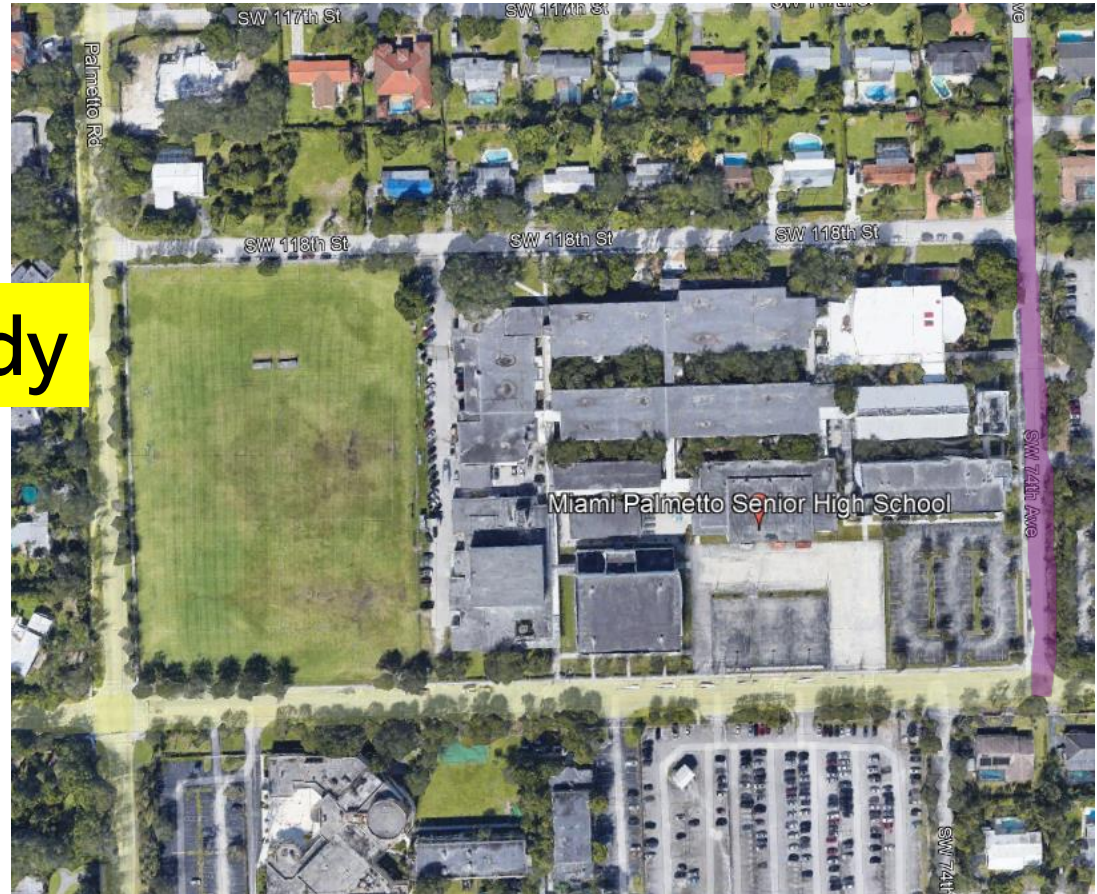
- School Zone Speed Limit: **15 MPH**
- Regular Zone Speed Limit: **35 MPH**

Speeding is defined as any recorded speed 1MPH over the school zone speed limit and 6MPH over the regular speed limit.

Date	6:00 AM – 7:00 AM			7:00 AM - 7:45 AM			7:45 AM - 2:15 PM			2:15 - 3:00 PM			3:00 PM – 6:00 PM		
	Vehicle Count	# of Violators	% Speeding	Vehicle Count	# of Violators	% Speeding	Vehicle Count	# of Violators	% Speeding	Vehicle Count	# of Violators	% Speeding	Vehicle Count	# of Violators	% Speeding
9/26/2023 - 10/2/2023	3,554	34	0.96%	3,549	2,025	57.06%	28,237	216	0.76%	3,501	2,274	64.95%	18,049	48	0.27%



School Zone Speed Study





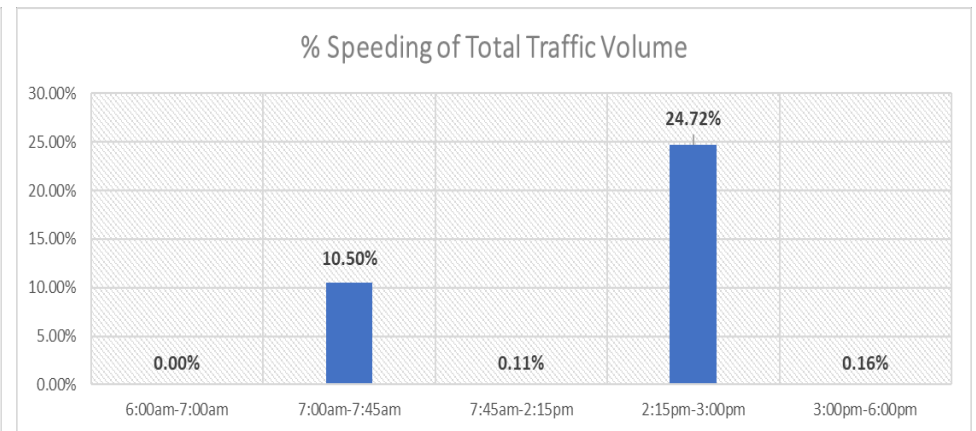
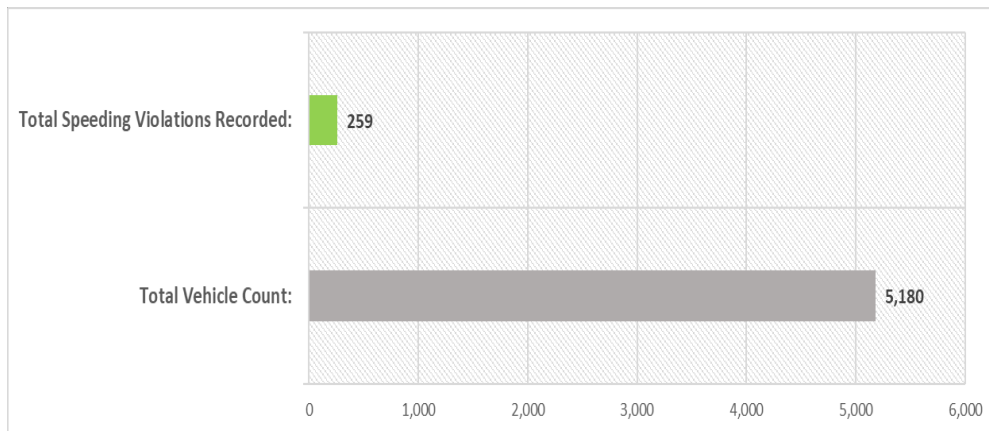
RedSpeed Florida, LLC (RedSpeed) conducted a 5-day speed study at Miami Palmetto Senior High School on SW 74th Ave N/B & S/B during the periods and times listed below.

This report was completed given the speed and time limit parameters of:

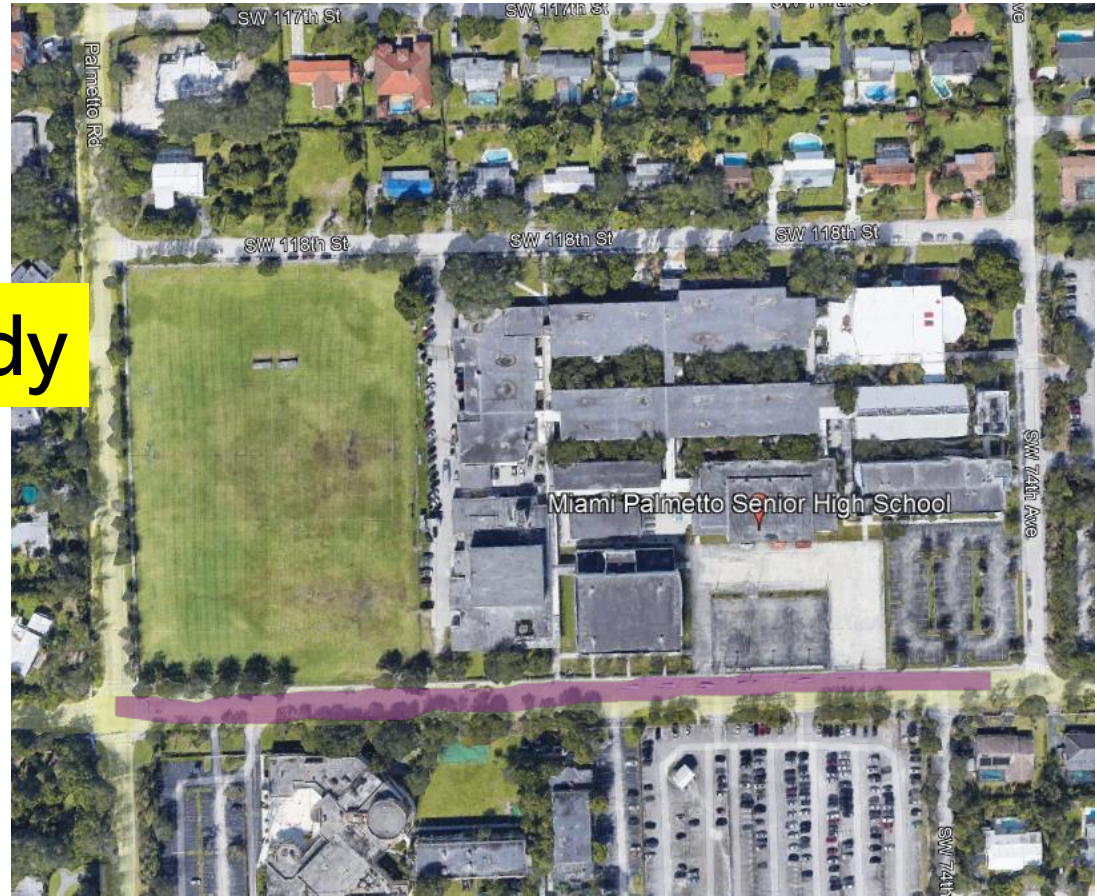
- School Zone Speed Limit: **15 MPH**
- Regular Zone Speed Limit: **30 MPH**

Speeding is defined as any recorded speed 1MPH over the school zone speed limit and 6MPH over the regular speed limit.

Date	6:00 AM – 7:00 AM			7:00 AM - 7:45 AM			7:45 AM - 2:15 PM			2:15 - 3:00 PM			3:00 PM – 6:00 PM		
	Vehicle Count	# of Violators	% Speeding	Vehicle Count	# of Violators	% Speeding	Vehicle Count	# of Violators	% Speeding	Vehicle Count	# of Violators	% Speeding	Vehicle Count	# of Violators	% Speeding
9/26/2023 - 10/2/2023	700	0	0.00%	743	78	10.50%	1,768	2	0.11%	716	177	24.72%	1,253	2	0.16%



School Zone Speed Study





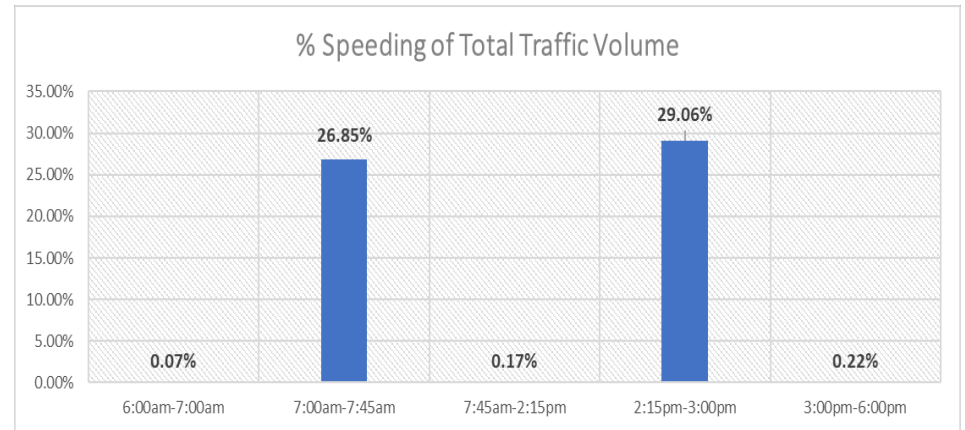
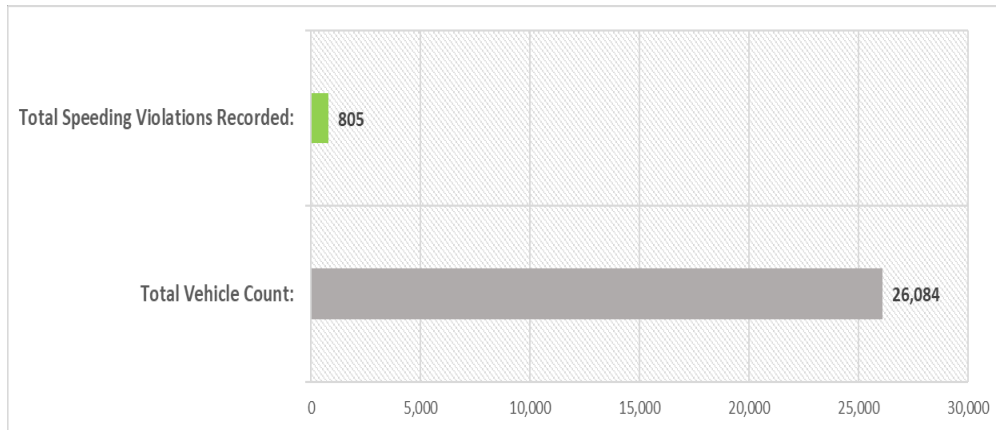
RedSpeed Florida, LLC (RedSpeed) conducted a 5-day speed study at Miami Palmetto Senior High School on SW 120th St E/B & W/B during the periods and times listed below.

This report was completed given the speed and time limit parameters of:

- School Zone Speed Limit: **15 MPH**
- Regular Zone Speed Limit: **35 MPH**

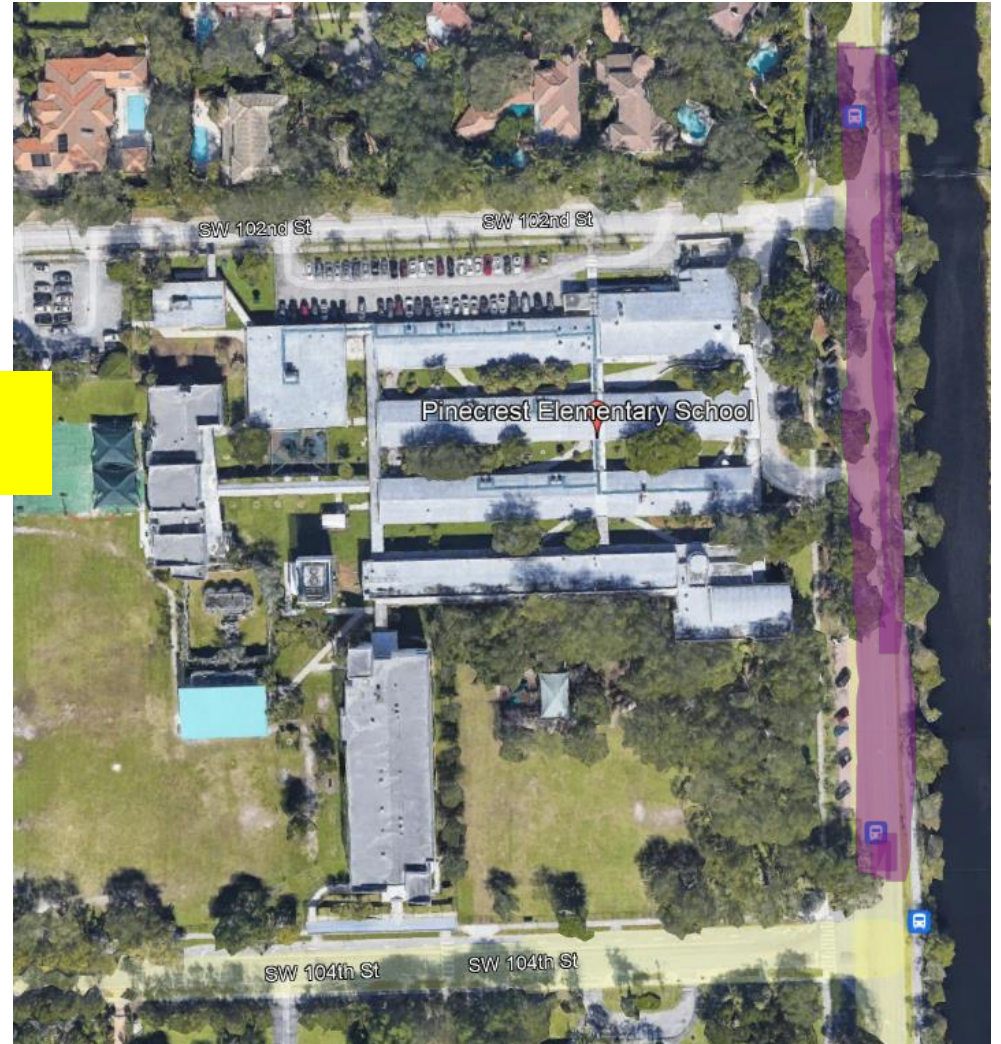
Speeding is defined as any recorded speed 1MPH over the school zone speed limit and 6MPH over the regular speed limit.

Date	6:00 AM – 7:00 AM			7:00 AM - 7:45 AM			7:45 AM - 2:15 PM			2:15 - 3:00 PM			3:00 PM – 6:00 PM		
	Vehicle Count	# of Violators	% Speeding	Vehicle Count	# of Violators	% Speeding	Vehicle Count	# of Violators	% Speeding	Vehicle Count	# of Violators	% Speeding	Vehicle Count	# of Violators	% Speeding
9/26/2023 - 10/2/2023	1,483	1	0.07%	1,322	355	26.85%	13,695	23	0.17%	1,404	408	29.06%	8,180	18	0.22%



RedSpeed®

School Zone Speed Study





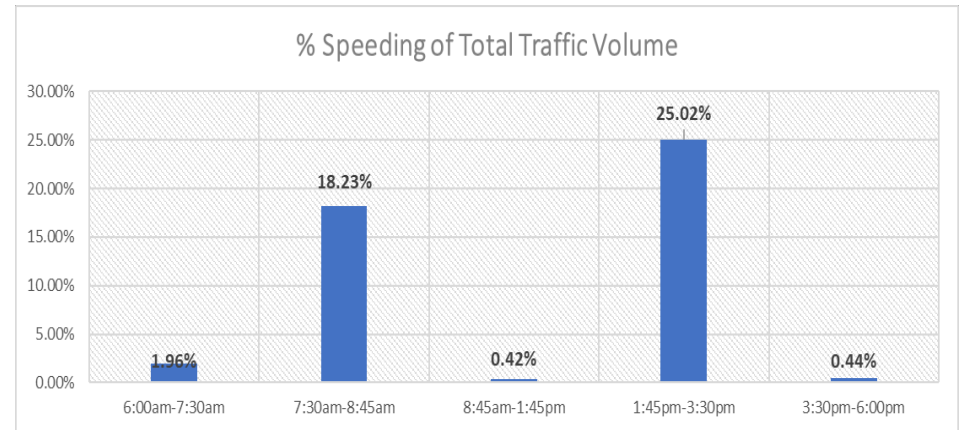
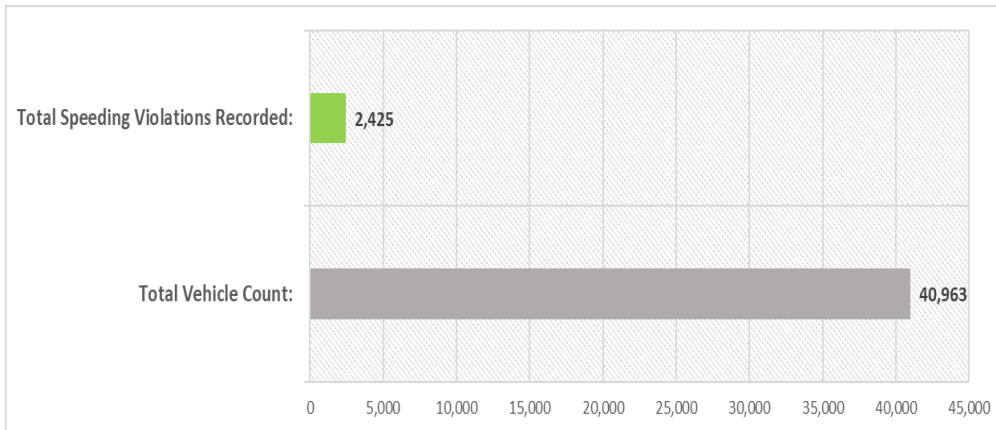
RedSpeed Florida, LLC (RedSpeed) conducted a 5-day speed study at **Pinecrest Elementary School** on **SW 57th Ave N/B & S/B** during the periods and times listed below.

This report was completed given the speed and time limit parameters of:

- School Zone Speed Limit: **15 MPH**
- Regular Zone Speed Limit: **35 MPH**

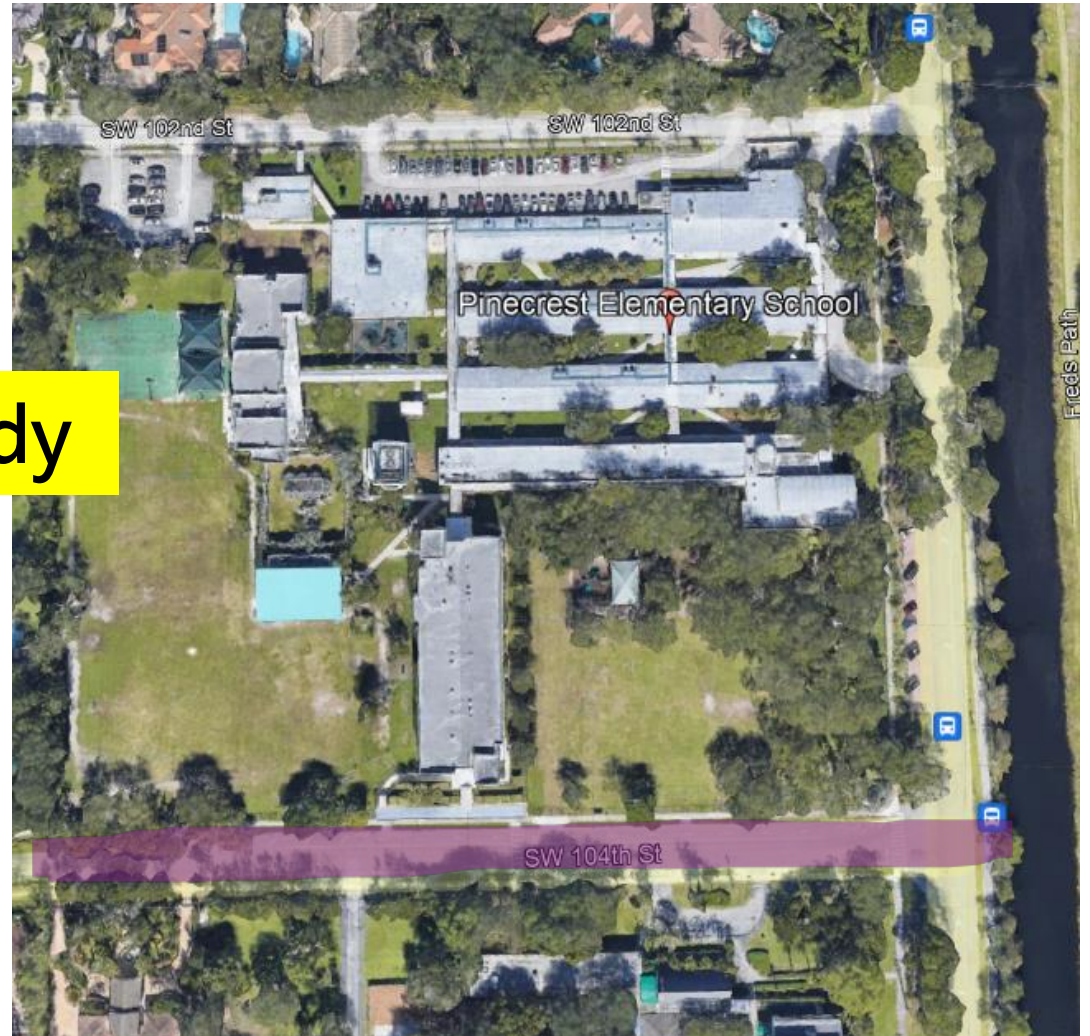
Speeding is defined as any recorded speed 1MPH over the school zone speed limit and 6MPH over the regular speed limit.

Date	6:00 AM – 7:30 AM			7:30 AM – 8:45 AM			8:45 AM - 1:45 PM			1:45 – 3:30 PM			3:30 PM – 6:00 PM		
	Vehicle Count	# of Violators	% Speeding	Vehicle Count	# of Violators	% Speeding	Vehicle Count	# of Violators	% Speeding	Vehicle Count	# of Violators	% Speeding	Vehicle Count	# of Violators	% Speeding
9/26/2023 - 10/2/2023	3,625	71	1.96%	4,613	841	18.23%	14,605	61	0.42%	5,583	1,397	25.02%	12,537	55	0.44%



RedSpeed®

School Zone Speed Study





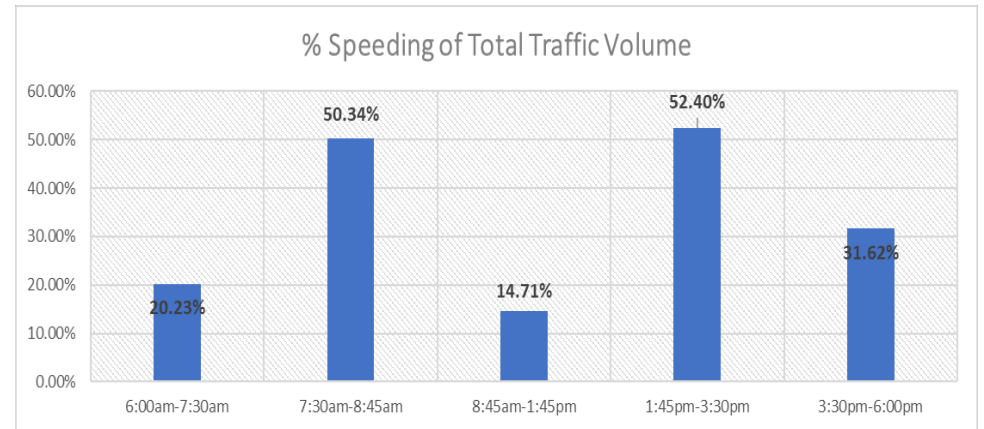
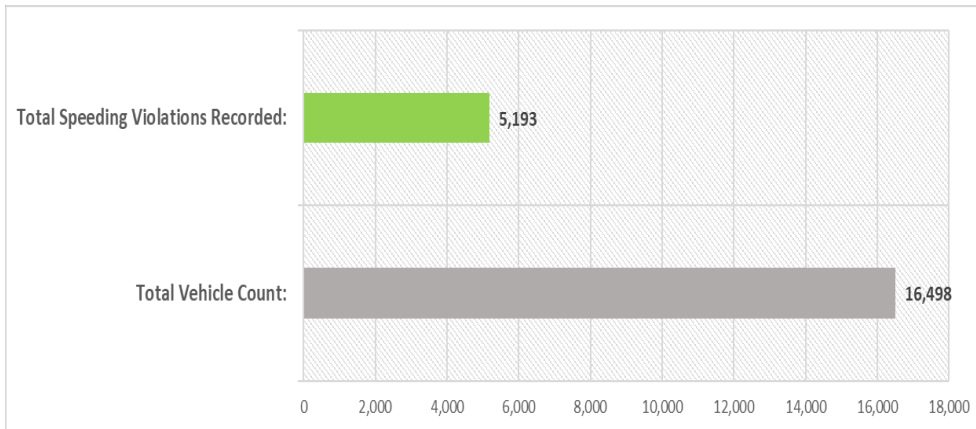
RedSpeed Florida, LLC (RedSpeed) conducted a 5-day speed study at **Pinecrest Elementary School** on **SW 104th Ave E/B & W/B** during the periods and times listed below.

This report was completed given the speed and time limit parameters of:

- School Zone Speed Limit: **15 MPH**
- Regular Zone Speed Limit: **30 MPH**

Speeding is defined as any recorded speed 1MPH over the school zone speed limit and 6MPH over the regular speed limit.

Date	6:00 AM – 7:30 AM			7:30 AM – 8:45 AM			8:45 AM - 1:45 PM			1:45 – 3:30 PM			3:30 PM – 6:00 PM		
	Vehicle Count	# of Violators	% Speeding	Vehicle Count	# of Violators	% Speeding	Vehicle Count	# of Violators	% Speeding	Vehicle Count	# of Violators	% Speeding	Vehicle Count	# of Violators	% Speeding
9/26/2023 - 10/2/2023	1,117	226	20.23%	2,755	1,387	50.34%	5,562	818	14.71%	2,544	1,333	52.40%	4,520	1,429	31.62%



RedSpeed®



School Zone Speed Study



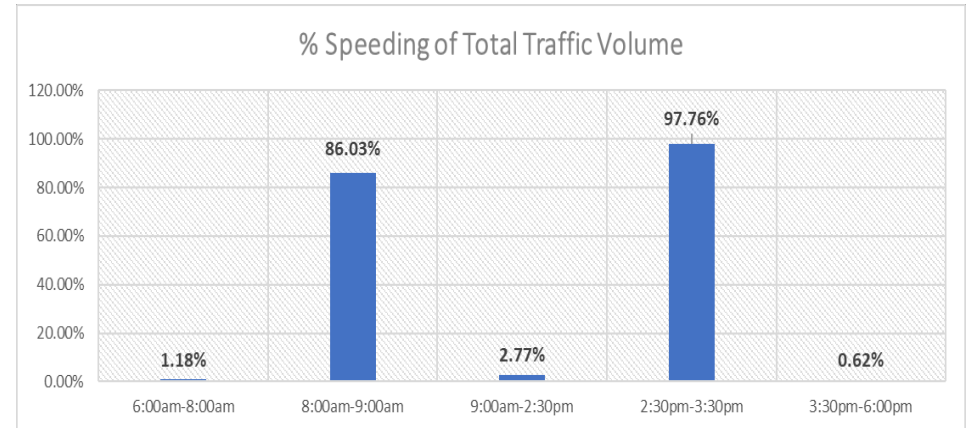
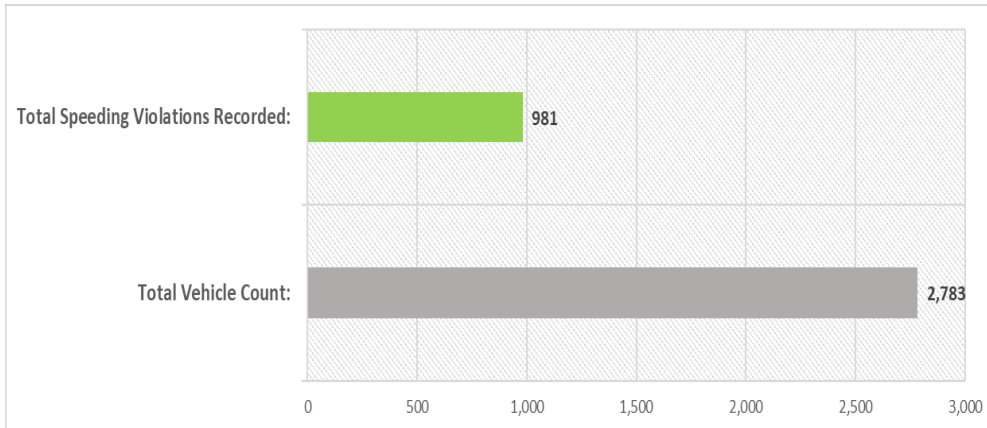
RedSpeed Florida, LLC (RedSpeed) conducted speed studies at **Temple Beth AM** on **SW 60th Ave NB and SB** during the periods and times listed below.

This report was completed given the speed and time limit parameters of:

- School Zone Speed Limit: **15 MPH**
- Regular Zone Speed Limit: **35 MPH**

Speeding is defined as any recorded speed 1MPH over the school zone speed limit and 6MPH over the regular speed limit.

Date	6:00 AM – 8:00 AM			8:00 AM - 9:00 AM			9:00 AM – 2:30 PM			2:30 – 3:30 PM			3:30 PM – 6:00 PM		
	Vehicle Count	# of Violators	% Speeding	Vehicle Count	# of Violators	% Speeding	Vehicle Count	# of Violators	% Speeding	Vehicle Count	# of Violators	% Speeding	Vehicle Count	# of Violators	% Speeding
9/26/2023 - 10/2/2023	509	6	1.18%	802	690	86.03%	722	20	2.77%	268	262	97.76%	482	3	0.62%



RedSpeed®



School Zone Speed Study



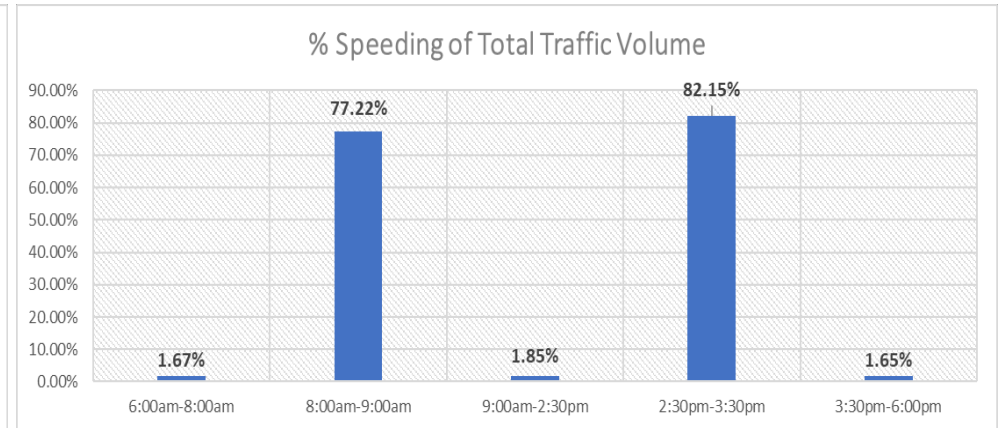
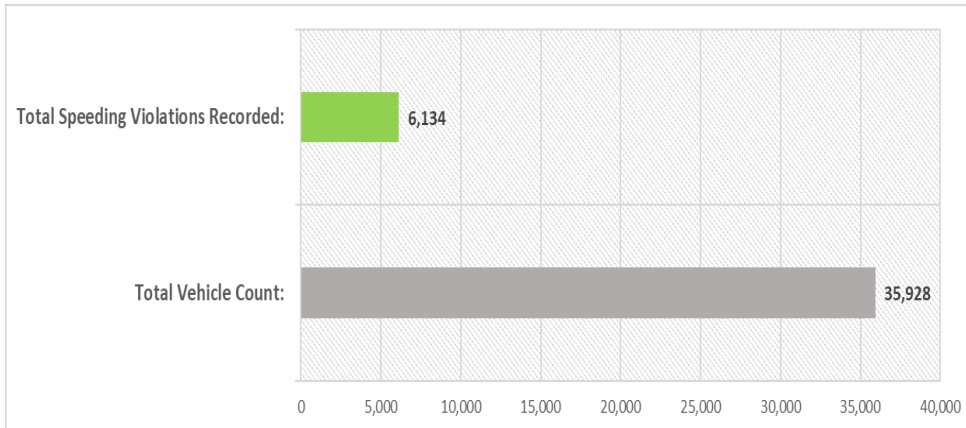
RedSpeed Florida, LLC (RedSpeed) conducted speed studies at **Temple Beth AM on SW 88th St EB and WB** during the periods and times listed below.

This report was completed given the speed and time limit parameters of:

- School Zone Speed Limit: **15 MPH**
- Regular Zone Speed Limit: **35 MPH**

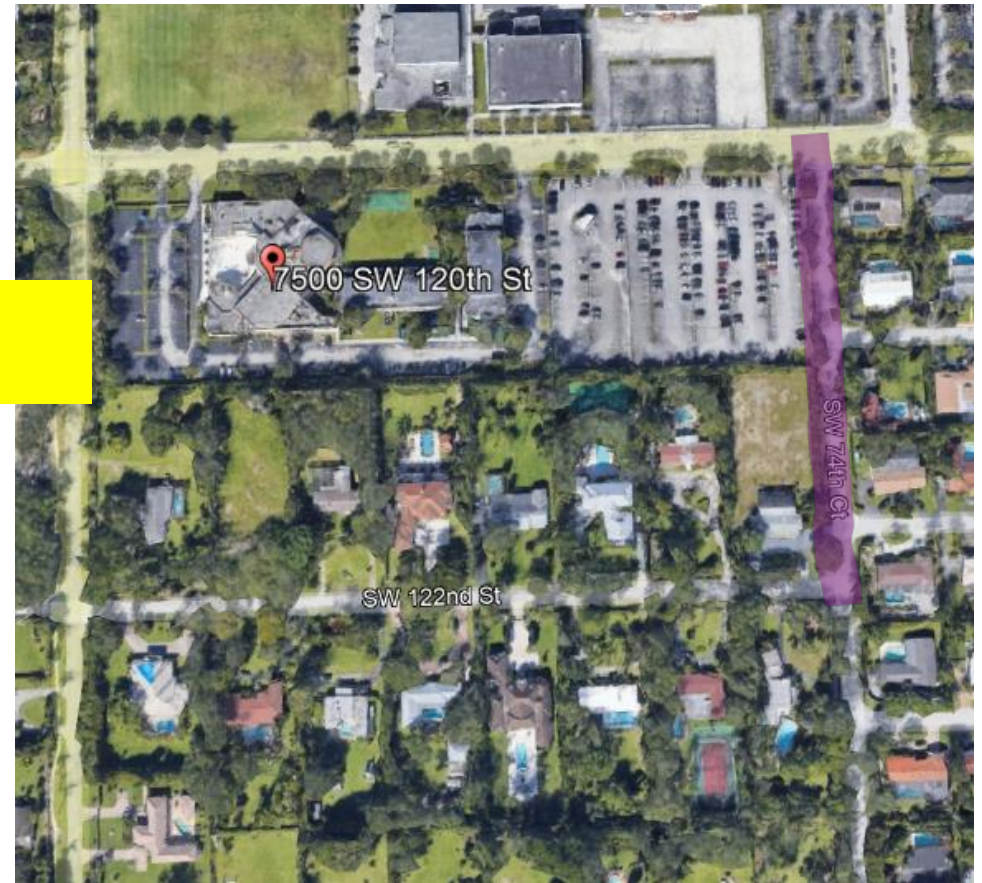
Speeding is defined as any recorded speed 1MPH over the school zone speed limit and 6MPH over the regular speed limit.

Date	6:00 AM – 8:00 AM			8:00 AM - 9:00 AM			9:00 AM – 2:30 PM			2:30 – 3:30 PM			3:30 PM – 6:00 PM		
	Vehicle Count	# of Violators	% Speeding	Vehicle Count	# of Violators	% Speeding	Vehicle Count	# of Violators	% Speeding	Vehicle Count	# of Violators	% Speeding	Vehicle Count	# of Violators	% Speeding
9/26/2023 - 10/2/2023	4,963	83	1.67%	3,306	2,553	77.22%	14,578	269	1.85%	3,743	3,075	72.15%	9,338	154	1.65%



RedSpeed®

School Zone Speed Study





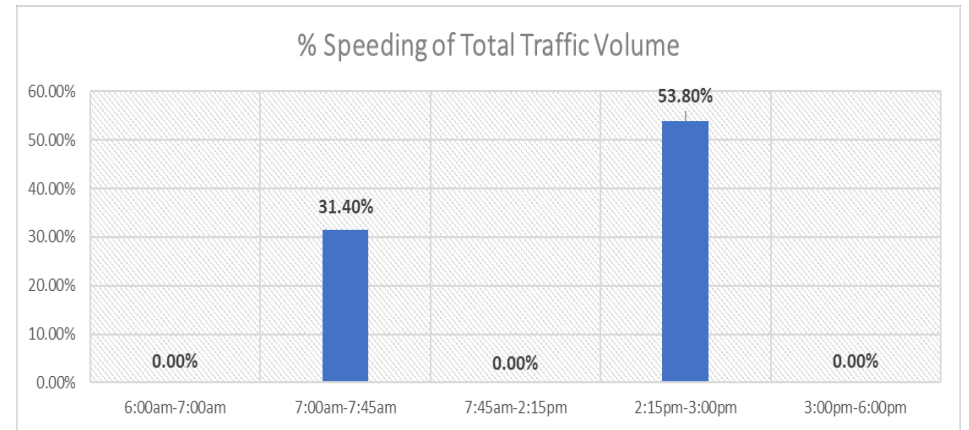
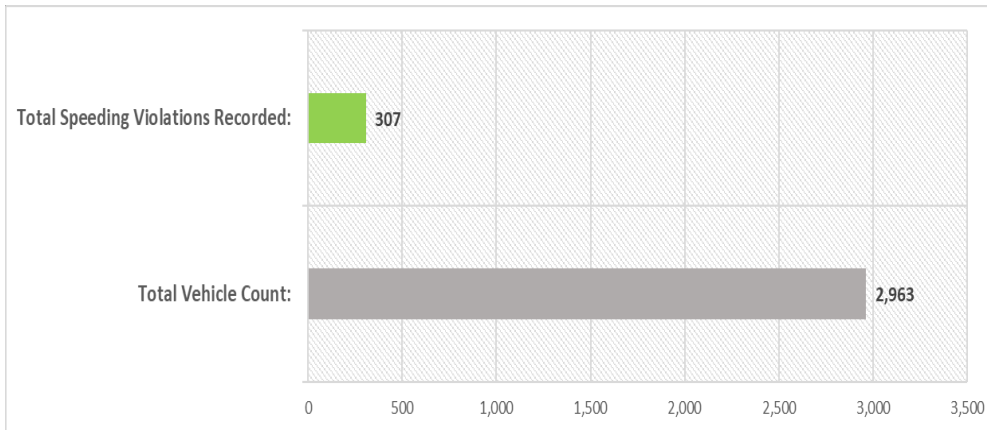
RedSpeed Florida, LLC (RedSpeed) conducted a 5-day speed study at **True North Classical Academy** on **SW 74th Ct N/B & S/B** during the periods and times listed below.

This report was completed given the speed and time limit parameters of:

- School Zone Speed Limit: **15 MPH**
- Regular Zone Speed Limit: **35 MPH**

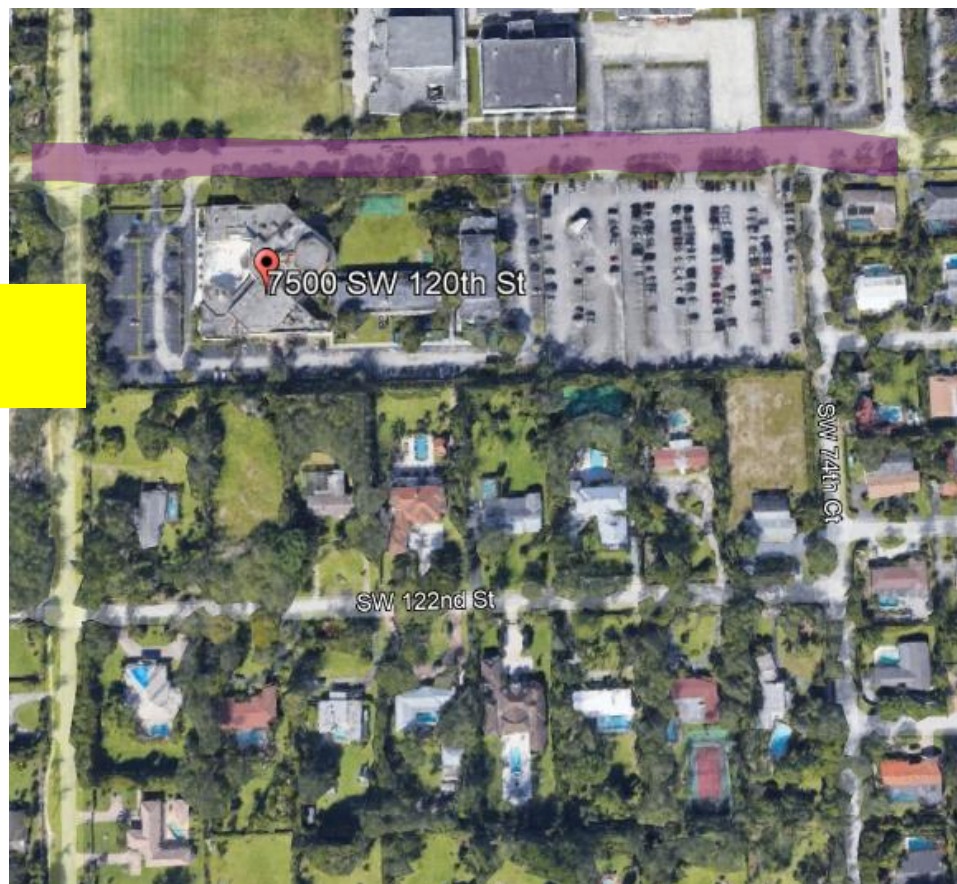
Speeding is defined as any recorded speed 1MPH over the school zone speed limit and 6MPH over the regular speed limit.

Date	6:00 AM – 7:00 AM			7:00 AM - 7:45 AM			7:45 AM - 2:15 PM			2:15 - 3:00 PM			3:00 PM – 6:00 PM		
	Vehicle Count	# of Violators	% Speeding	Vehicle Count	# of Violators	% Speeding	Vehicle Count	# of Violators	% Speeding	Vehicle Count	# of Violators	% Speeding	Vehicle Count	# of Violators	% Speeding
9/26/2023 - 10/2/2023	334	0	0.00%	414	130	31.40%	1,237	0	0.00%	329	177	53.80%	649	0	0.00%



RedSpeed®

School Zone Speed Study





RedSpeed Florida, LLC (RedSpeed) conducted a 5-day speed study at **True North Classical Academy** on **SW 120th St N/B & S/B** during the periods and times listed below.

This report was completed given the speed and time limit parameters of:

- School Zone Speed Limit: **15 MPH**
- Regular Zone Speed Limit: **35 MPH**

Speeding is defined as any recorded speed 1MPH over the school zone speed limit and 6MPH over the regular speed limit.

Date	6:00 AM – 7:00 AM			7:00 AM - 7:45 AM			7:45 AM - 2:15 PM			2:15 - 3:00 PM			3:00 PM – 6:00 PM		
	Vehicle Count	# of Violators	% Speeding	Vehicle Count	# of Violators	% Speeding	Vehicle Count	# of Violators	% Speeding	Vehicle Count	# of Violators	% Speeding	Vehicle Count	# of Violators	% Speeding
9/26/2023 - 10/2/2023	1,483	1	0.07%	1,322	357	27.00%	13,695	23	0.17%	1,404	408	29.06%	8,180	18	0.22%

