



Robert C. Mattes, CPRE
Parks and Recreation Director
parks@pinecrest-fl.gov

MEMORANDUM

Department of Parks and Recreation

DATE: December 2, 2022
TO: Yocelyn Galiano, ICMA-CM, Village Manager
FROM: Robert C. Mattes, CPRE, CPSI, Parks and Recreation Director
RE: Possible Pickleball Site Locations

Every weekday morning for the past two years, approximately 30-40 participants (roughly 300 active participants) gather at Suniland Park to utilize the temporary pickleball courts installed on the park's basketball courts. Pickleball has been at the forefront of many conversations in the Village, and there is a clear interest/need to establish permanent pickleball courts. Still, there is also a lack of available space which has caused the department to frequently assess new locations or try to repurpose existing areas within the parks.

Currently, two locations are being explored outside of Gary Matzner Park. Both locations have pros and cons that need to be considered. The Suniland Annex has been considered due to the available space; however, forty-five parking spaces would be sacrificed to install the courts, and the annex would no longer provide access to US 1 from 132 Street. This is not an ideal location, but it has been a consideration. The cost to install courts at this location is estimated at \$350,000 and includes reworking the drainage for the parking area. The timeframe to complete this project is unknown due to permitting requirements and construction considerations, but it is estimated at one year from design to completion.

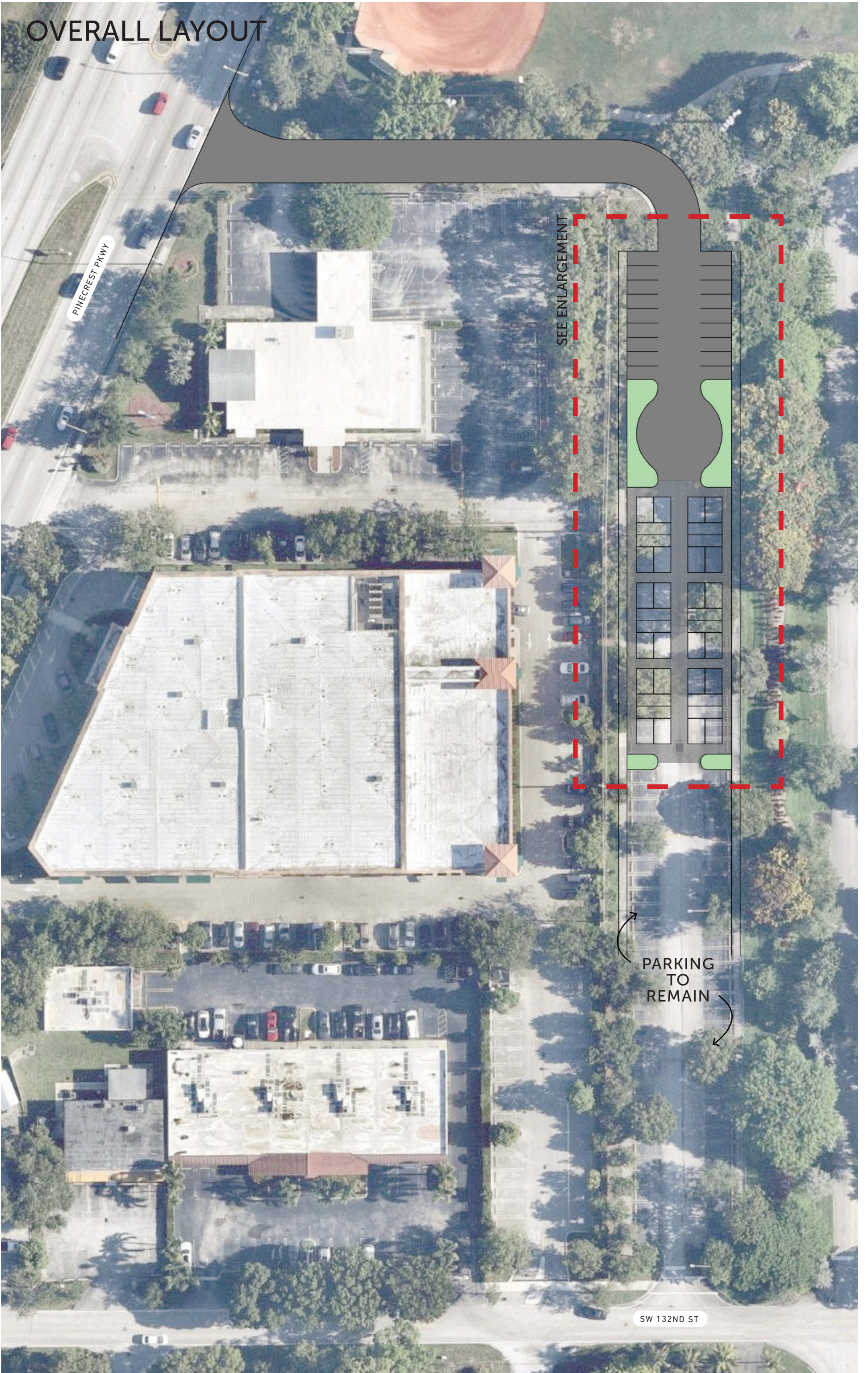
The second location that has recently become a possibility is resurfacing one of the tennis courts at Coral Pine Park into four pickleball courts. Previously, this has not been an option due to the amount of use the tennis facility has received; however, reviewing data over the past year shows a marked decline in tennis court use. During most days, there is at least one tennis court unused each hour. This is predominantly due to the reduced number of tennis pros instructing at the facility.



Converting one of the tennis courts into pickleball courts is fairly easy and can be reversed in the future if the need arises. Additionally, the courts would become active again and continue producing the revenue required to offset the facility's operations.

Currently, the department has \$16,800 budgeted for court surfacing, this could be used to resurface the court into four pickleball courts. The total cost to convert the court is approximately \$30,000. This project would not require permits and could be completed in a matter of weeks.

OVERALL LAYOUT



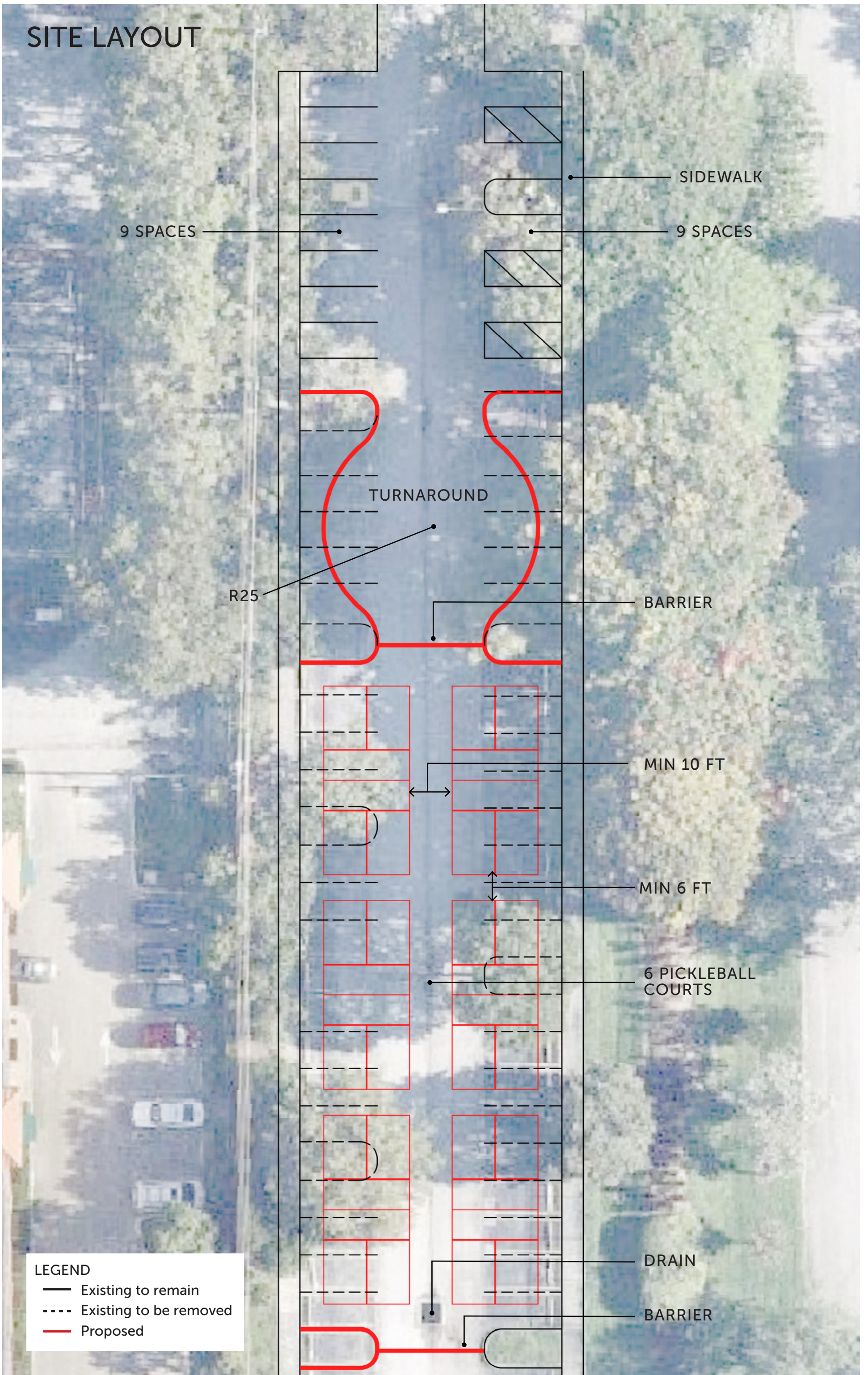
PINECREST PKWY

SEE ENLARGEMENT

PARKING TO REMAIN

SW 132ND ST

SITE LAYOUT





Example layout of four pickleball courts at Coral Pine Park

SW 69th Ave

SW 69th Ave

SW 69th

Coral Pine Park

6955

6955

David Ensogna Tennis Academy

Layers

Google