



Parks and Recreation Department

MEMORANDUM

DATE: May 2, 2025

TO: Yocelyn Galiano, ICMA-CM, Village Manager

FROM: Robert C. Mattes, CPRE, CPSI, Parks and Recreation Director

RE: Aleyda Mas Park Master Plan and Conceptual Design

Over the past nine months, the Parks and Recreation Department has collaborated closely with Urban Robot Associates to develop a comprehensive master plan and conceptual design for Aleyda Mas Park. This process has been driven by an inclusive and transparent approach, beginning with a series of community and stakeholder meetings and a robust community survey that received input from nearly one thousand participants, with 88% of those participants being residents of Pinecrest. A public meeting was held to review the survey results and gather additional feedback. Throughout the planning process, our team coordinated with multiple permitting agencies to ensure design feasibility and conducted numerous internal reviews to refine the concepts.

The final product reflects the collective input of residents, stakeholders, and technical experts, and it outlines two thoughtful conceptual design options for the park. You will notice that both designs include a small lap pool feature. This element was intentionally included as a visual placeholder to allow for proper evaluation within the design context. Should the pool not be included in the final plan, it can be removed without impacting the integrity of either concept. In that case, the corresponding locker room areas would be converted into flexible program space, allowing for other community-driven uses.

The department is proud of the results and excited to share these concepts with Council. We welcome your input on the proposed features and layout options. Following Council's direction on the final design elements, Urban Robot Associates will proceed with Phase II of the project and begin developing the construction documents. We appreciate your continued support and look forward to bringing this transformative community space to life.



ALEYDA MAS PARK

●●●●● MASTER PLAN DESIGN

MAY 1st, 2025



© 2025 URBAN ROBOT ASSOCIATES



MAY 1st, 2025

THE SANCTUARY



CONTENT

- 01 COMMUNITY WORKSHOP RESULTS p. 4
- 02 SITE INVENTORY & ANALYSIS p. 16
- 03 RENDERED PLANS p. 20
- 04 PROGRAM ELEMENTS p. 23
- 05 SITE PLANS p. 46
- 06 INTERIOR PLANS p. 49
- 07 HARDSCAPE PALETTE p. 52
- 08 LANDSCAPE LIGHTING p. 60
- 09 PLANTING PALETTE p. 62
- 10 SUMMARY p. 66



01 COMMUNITY WORKSHOP RESULTS

WATER FEATURES ZEN PEACEFUL

KID-FRIENDLY QUIET RELAXING

SHADE LAP POOL NATURE TRAILS SAFE

LOW-IMPACT PARK

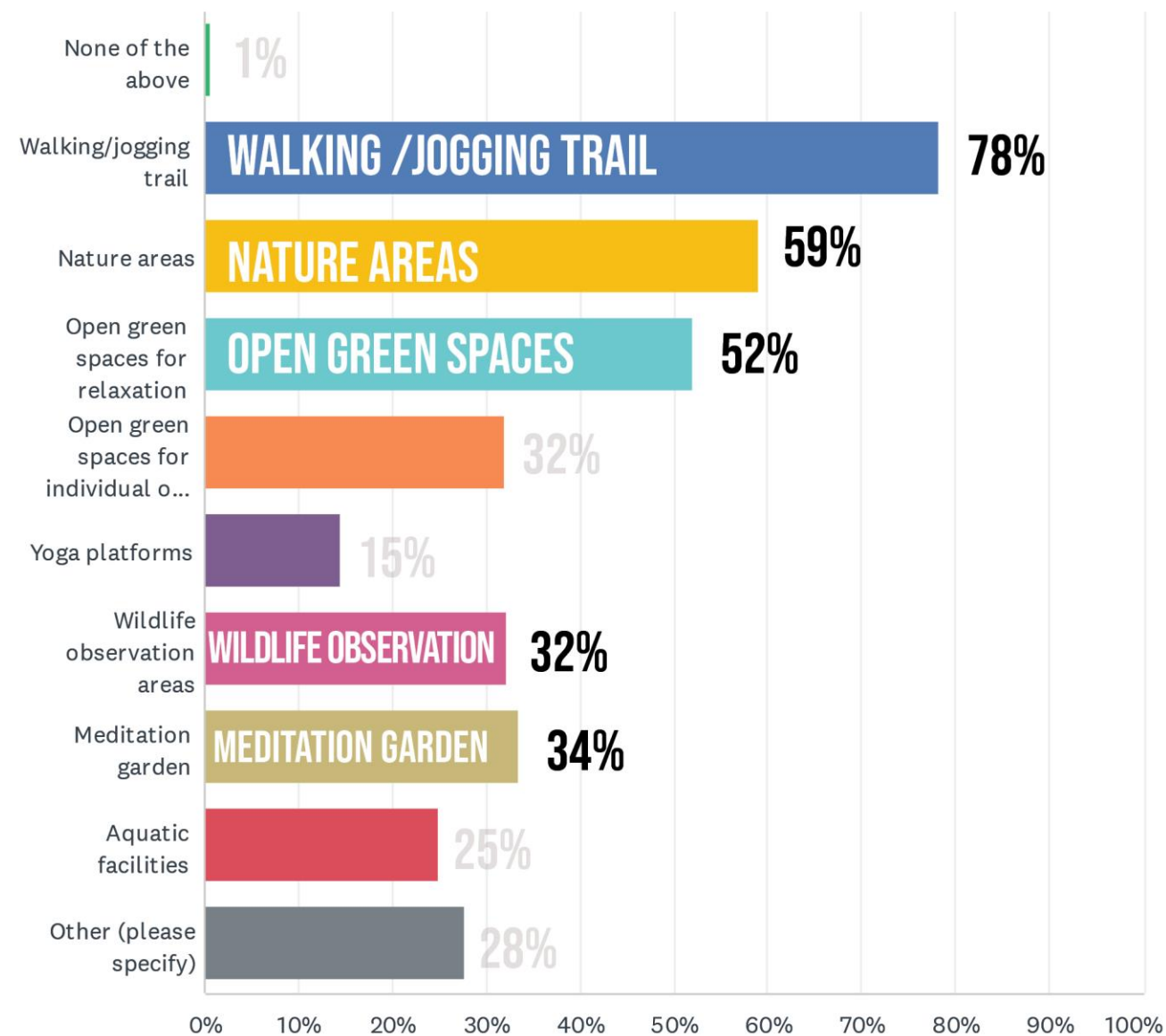
WELL-LIT TRANQUILITY PEACE

LIBRARY CLASSES GARDENING SEATING

PUBLIC SURVEY RESULTS

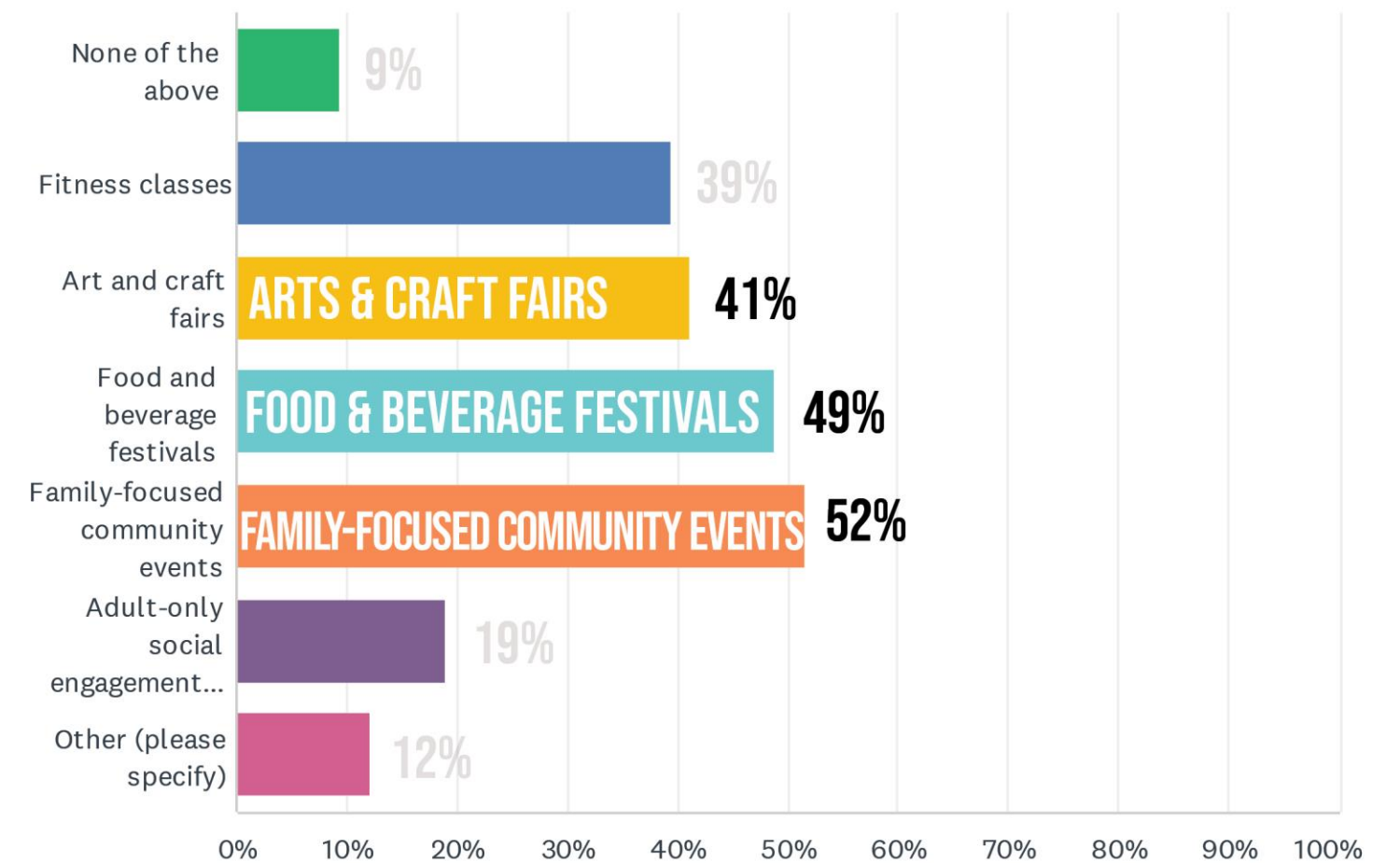
1

What type of recreational activities or areas would you like to see in Aleyda Mas Park?
Select 5



2

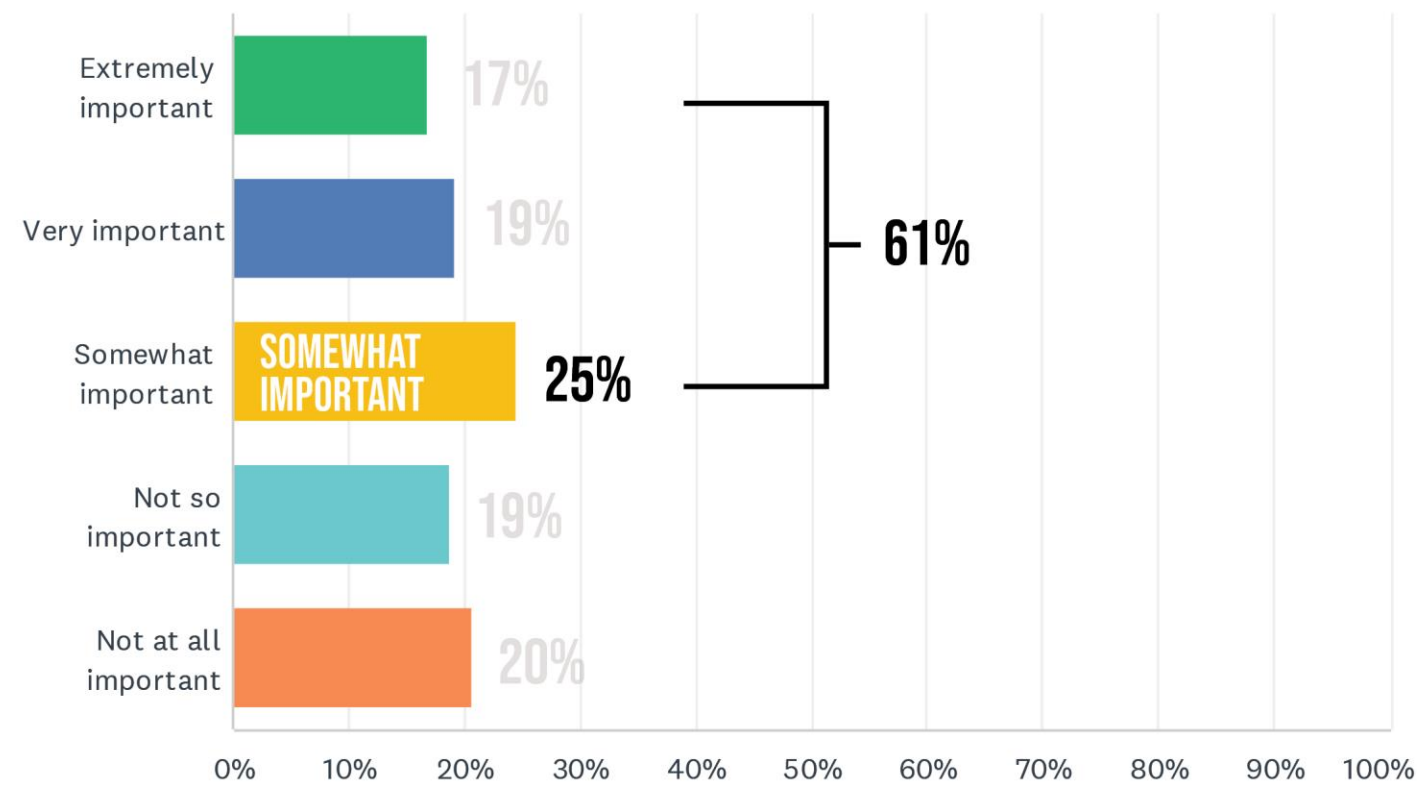
What type of community events or programs would you like the park to support? Select 3



PUBLIC SURVEY RESULTS

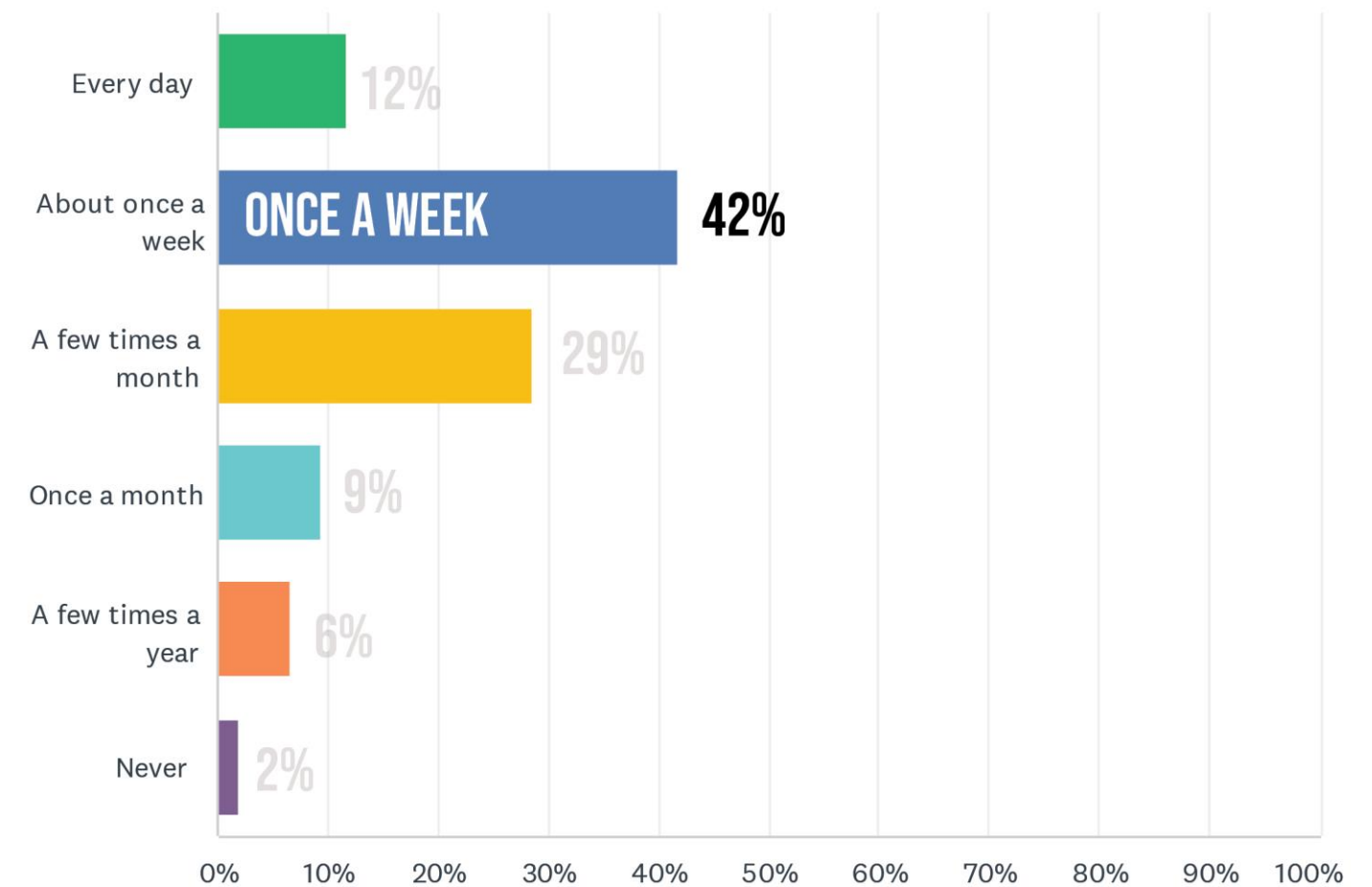
3

How important are wellness-focused classes or programs (e.g., yoga, pilates, meditation) to your use of the park?



4

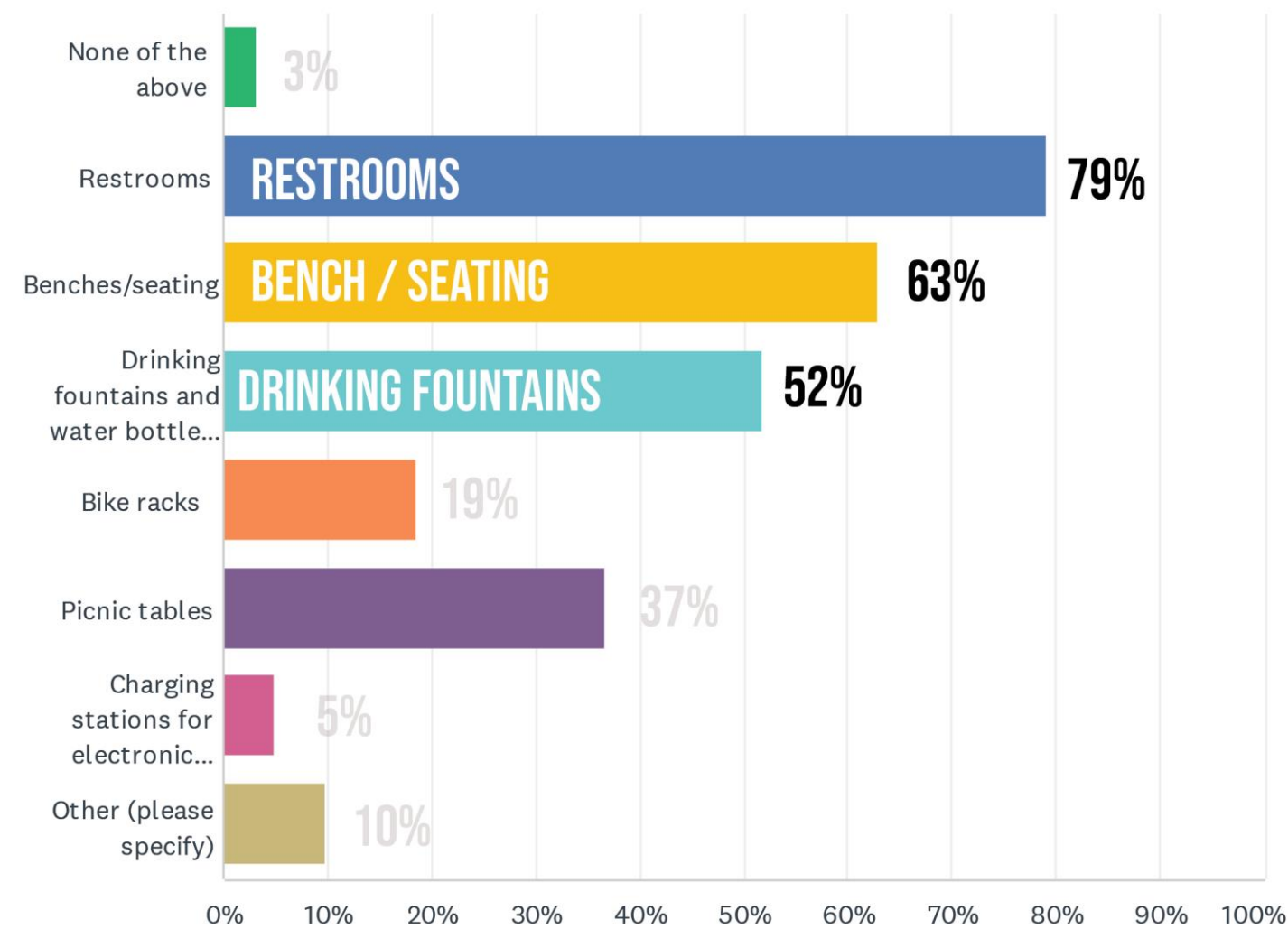
How often would you likely visit the park?



PUBLIC SURVEY RESULTS

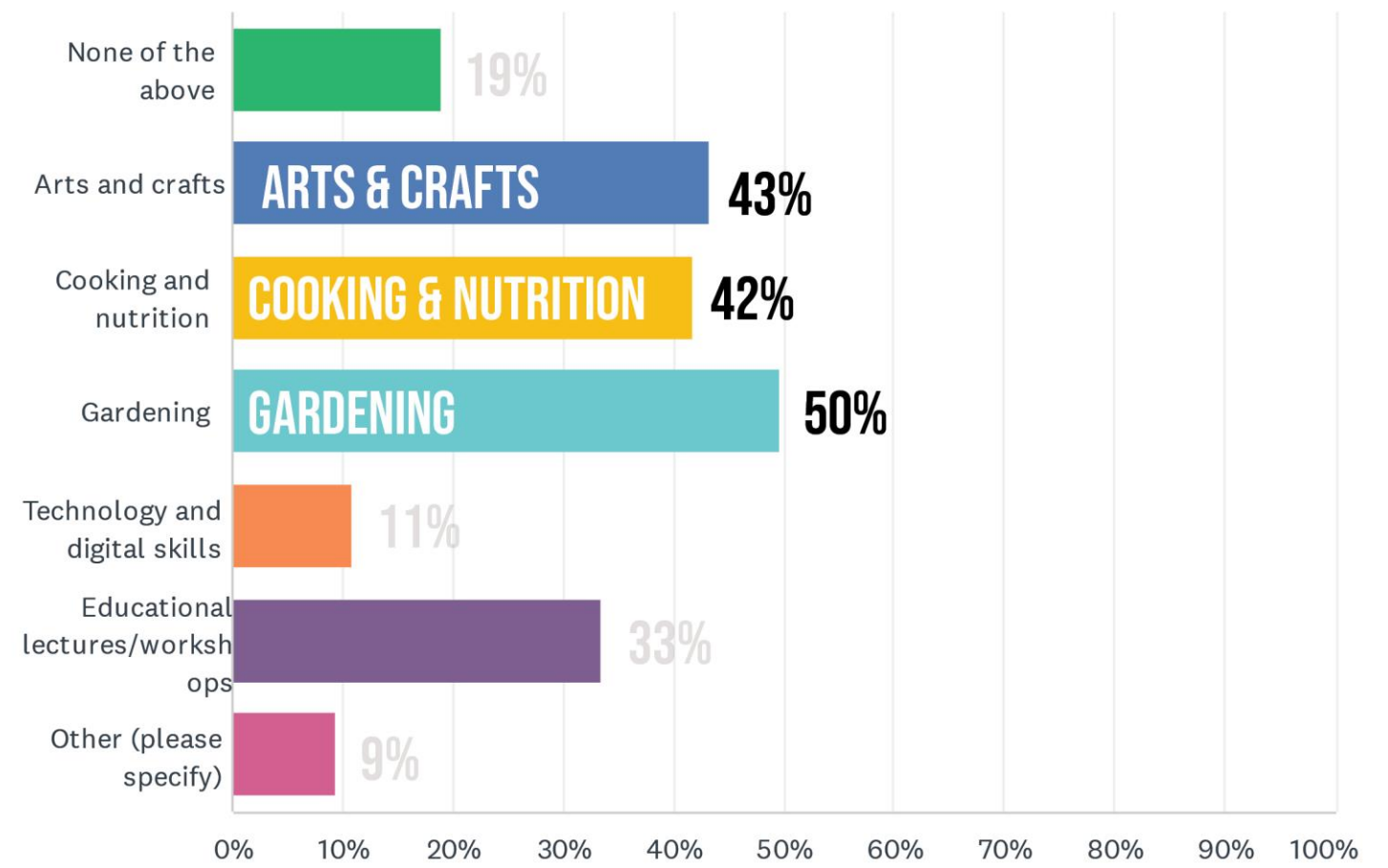
5

What type of amenities would improve your park experience? Select 3



6

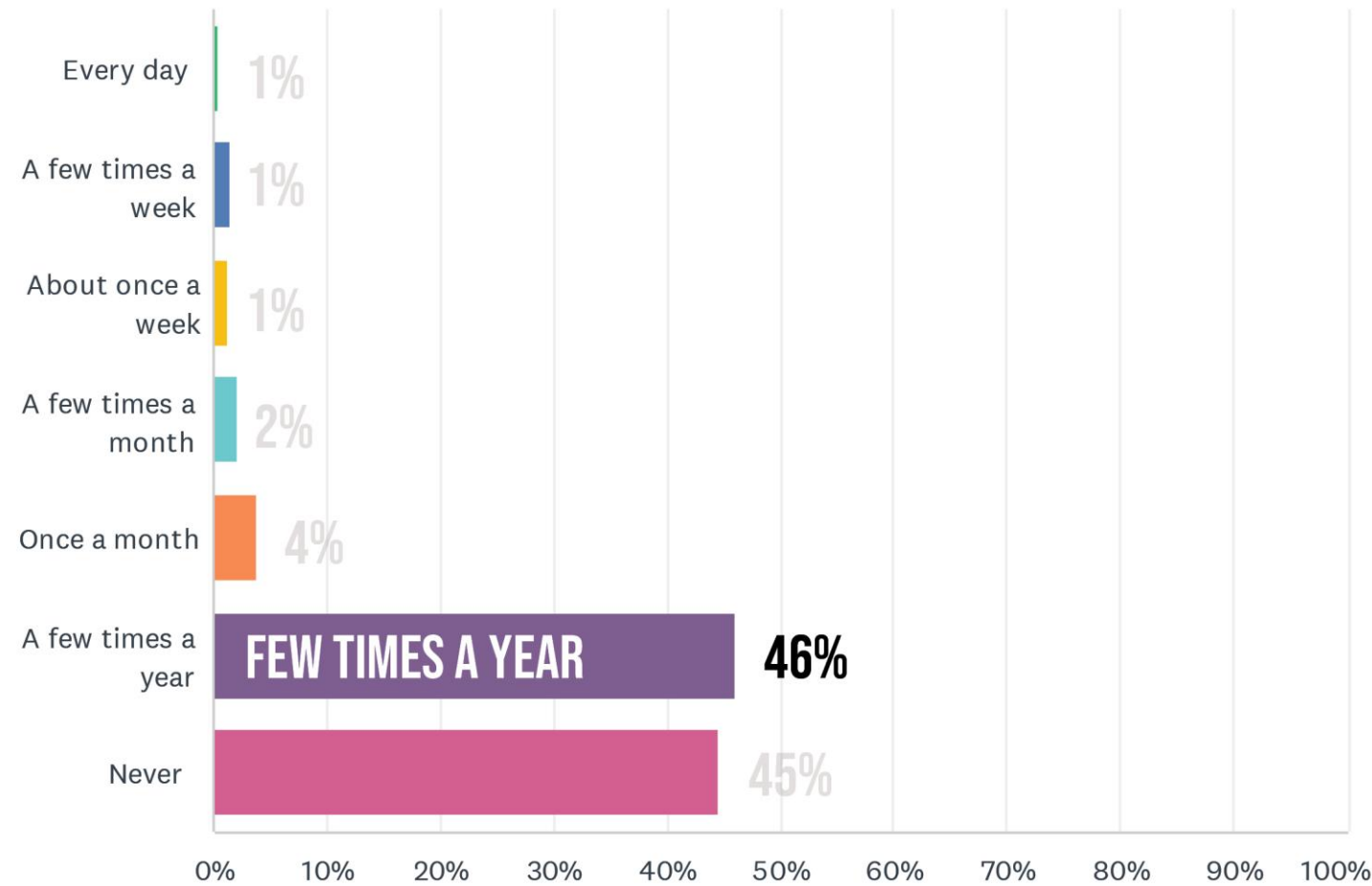
What kind of workshops or classes would you be interested in attending at this park? Select 3



PUBLIC SURVEY RESULTS

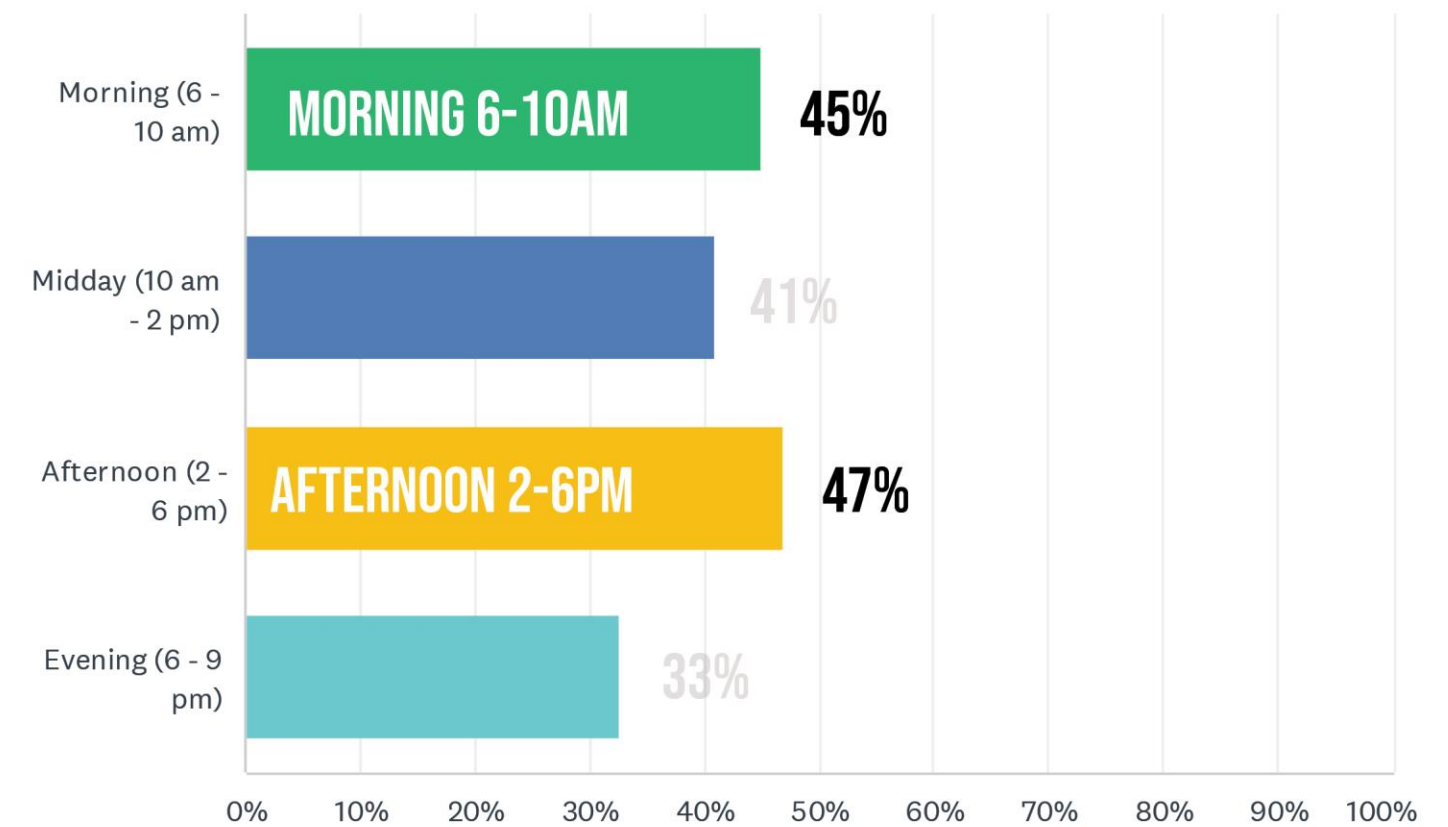
7

How often would you use small rental space (e.g., for private events, meetings, or workshops) if they were available



8

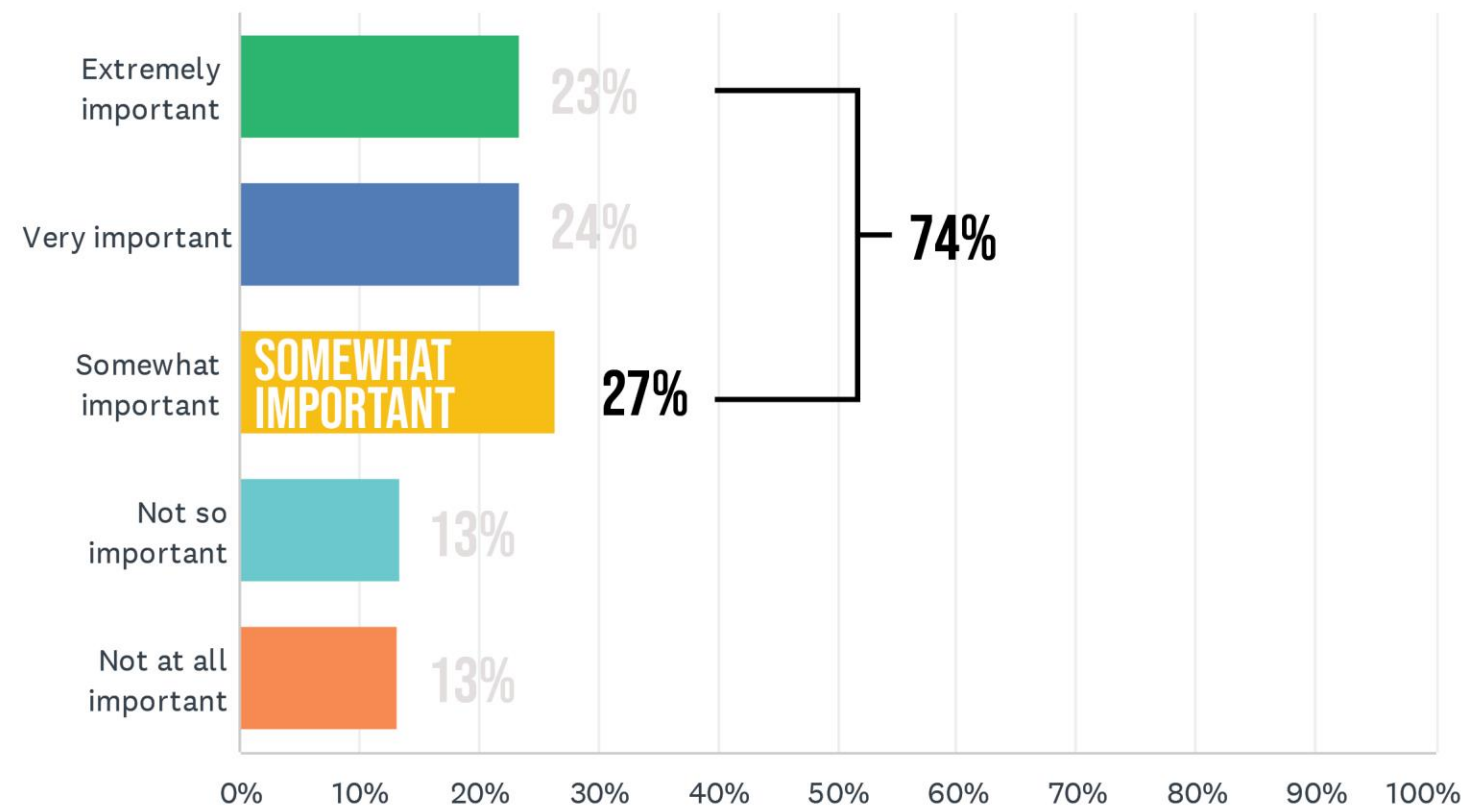
What hours would you most likely use the park if it were open? Select 2



PUBLIC SURVEY RESULTS

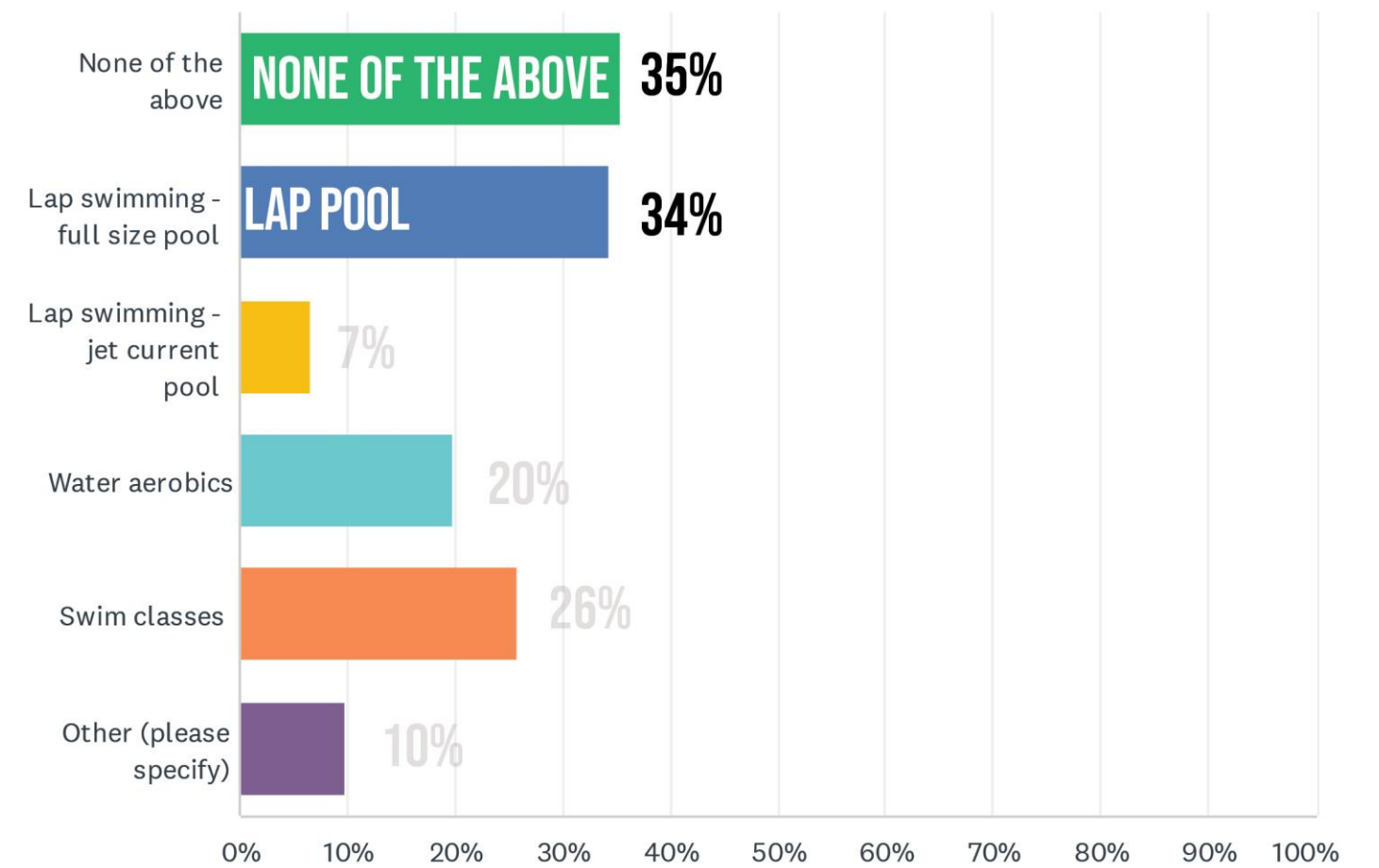
9

How important do you feel it is to focus on providing recreational opportunities specifically for adults?



10

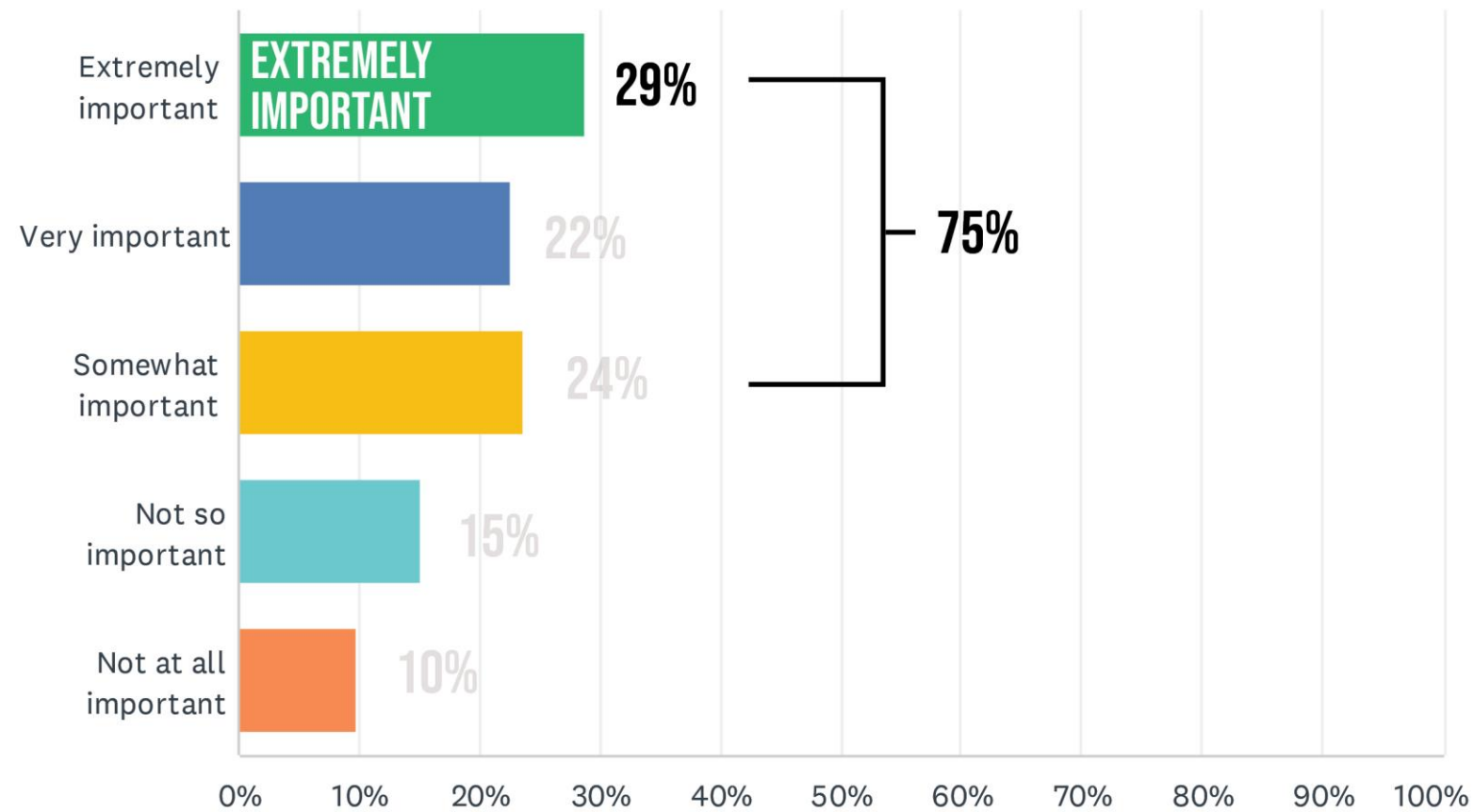
If a pool were on site, which of the following pool-related activities would you be most interested in?
Select 2



PUBLIC SURVEY RESULTS

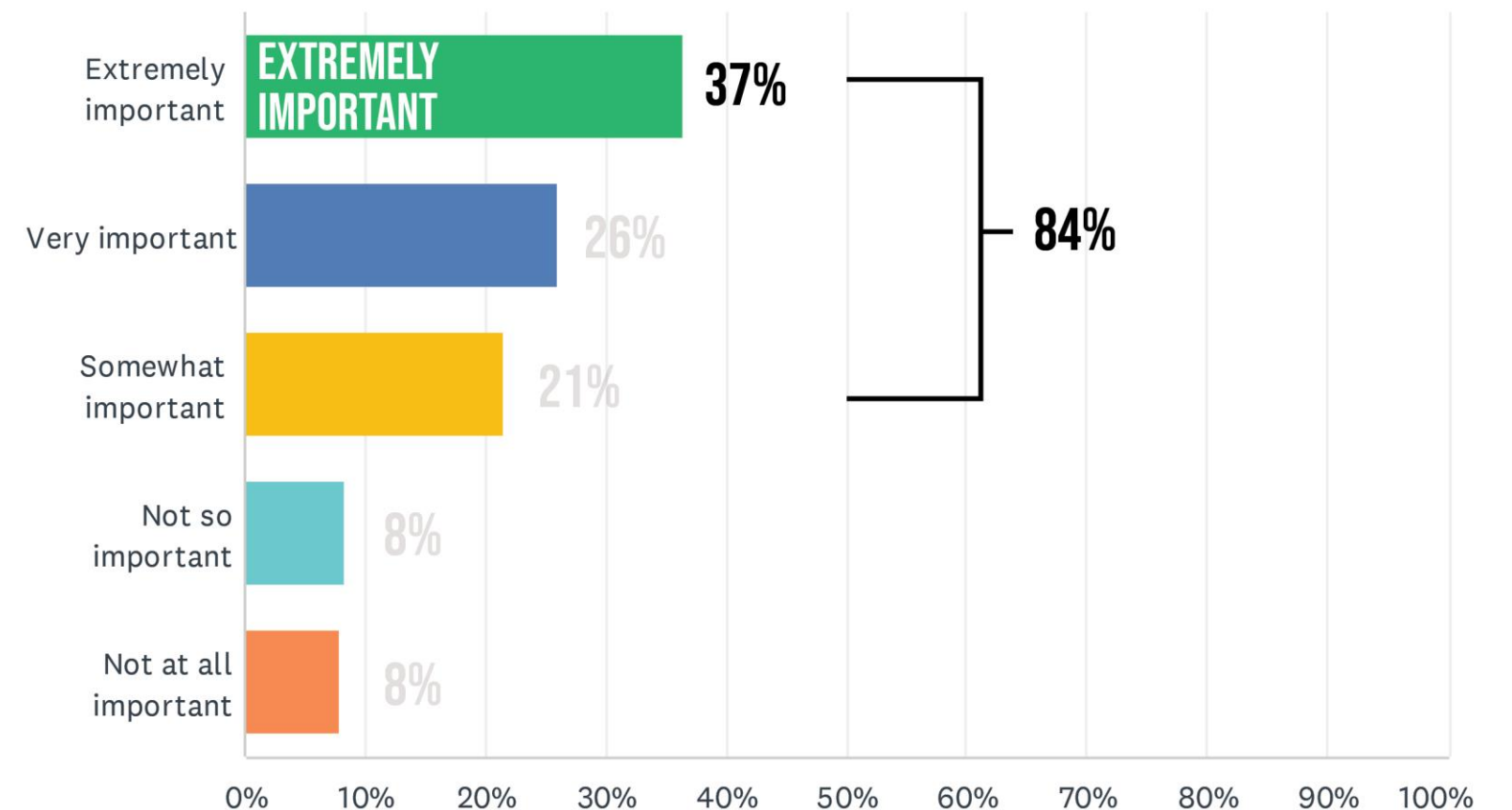
11

How important is it to you to include quiet, reflective spaces like meditation areas or nature retreats within Aleyda Mas Park?



12

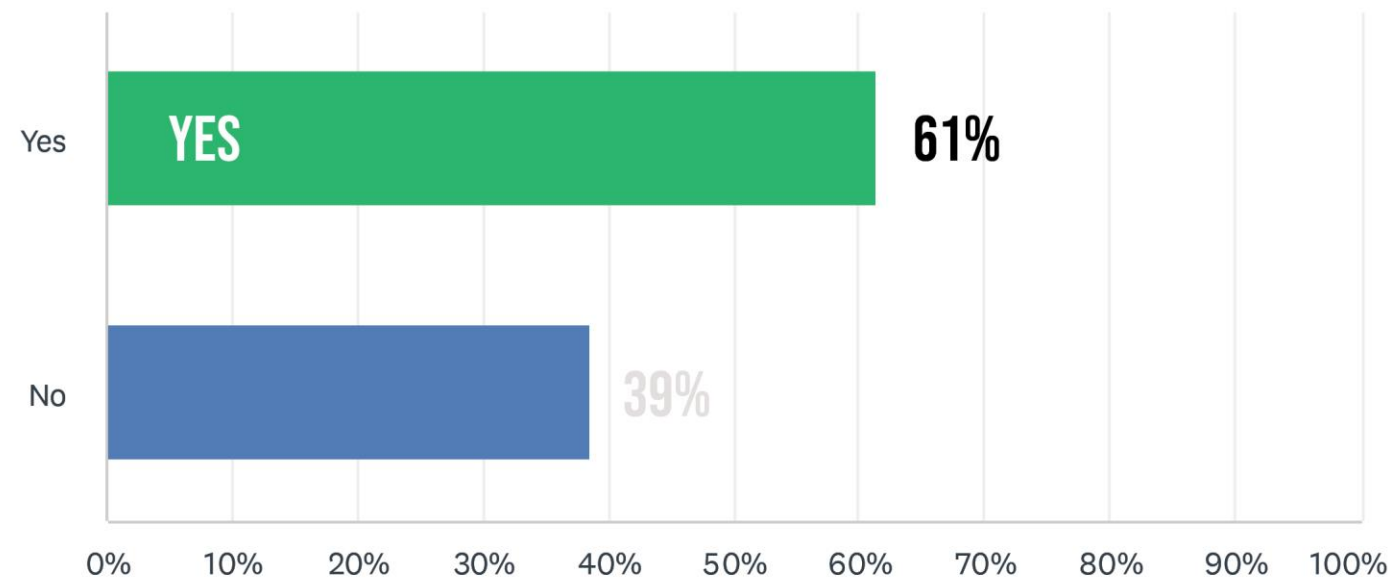
How important to you is sustainability (eco-friendly design, renewable energy sources) in the design of Aleyda Mas Park?



PUBLIC SURVEY RESULTS

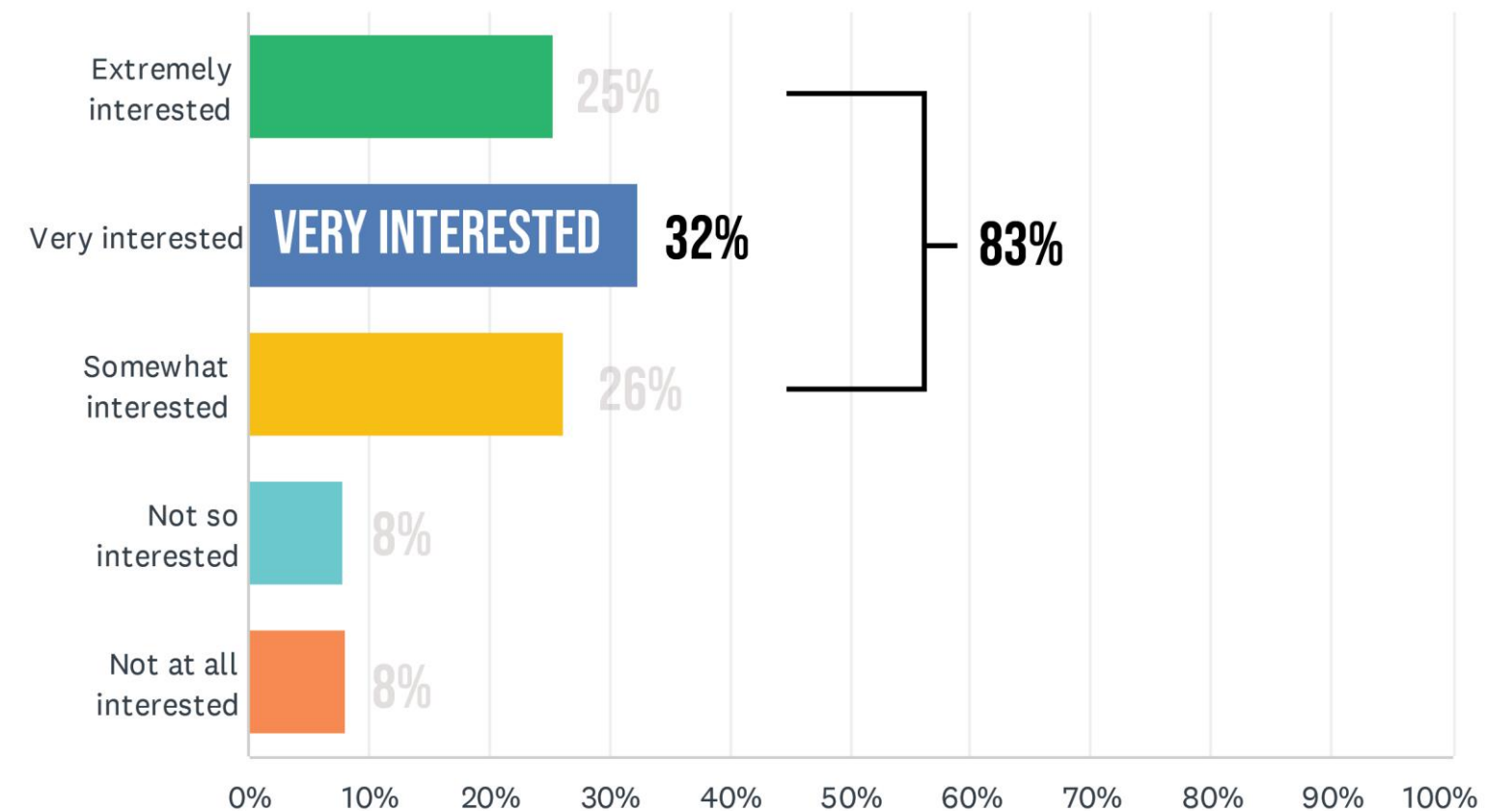
13

Would you participate in volunteer opportunities to help maintain Aleyda Mas Park (Community clean-up days, garden care)?



14

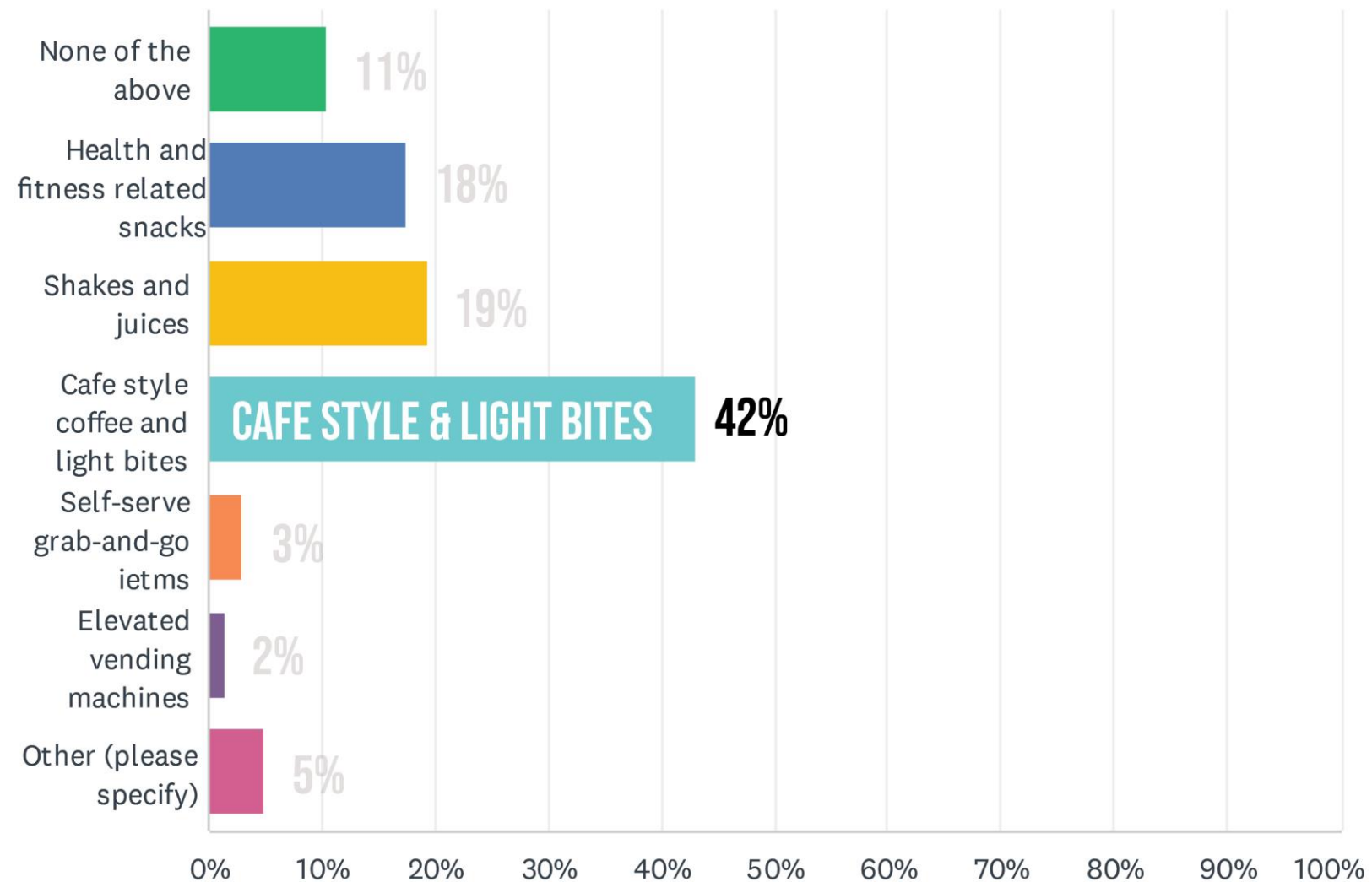
The garden that Aleyda Mas Park will be set within already has horticultural significance and unique botanical diversity. Would you be interested in learning more about the garden through signage and other gardening /nature programs



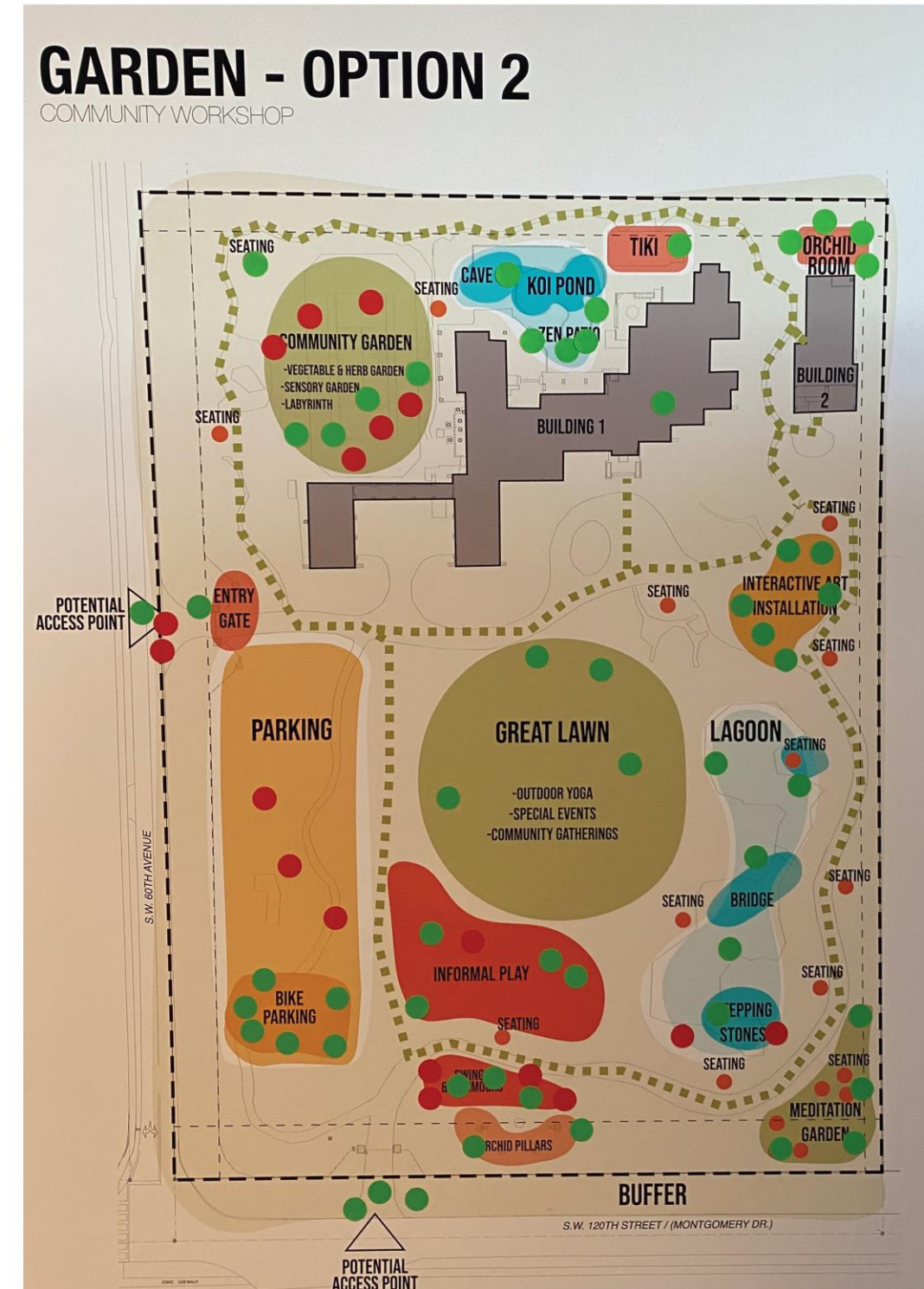
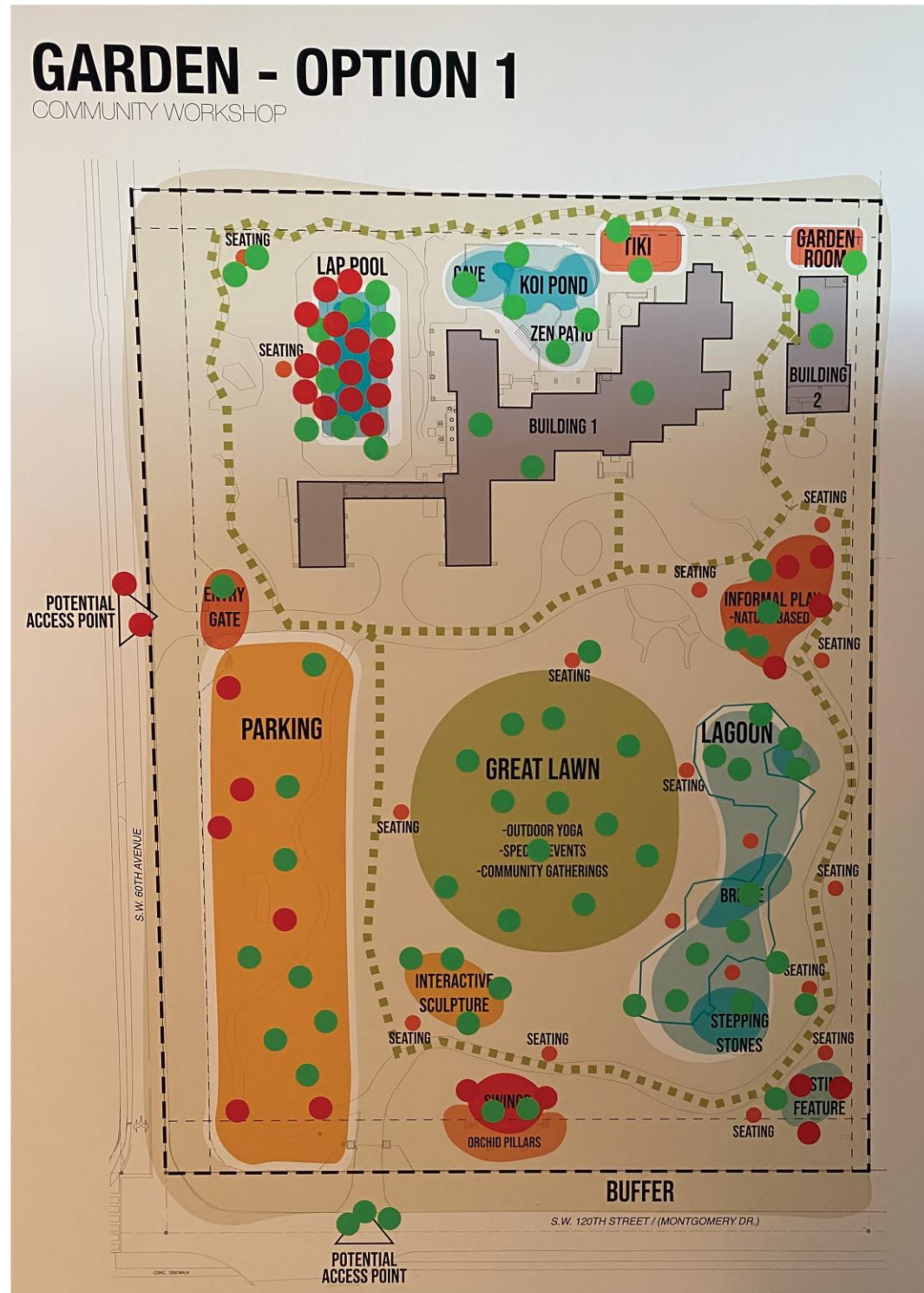
PUBLIC SURVEY RESULTS

15

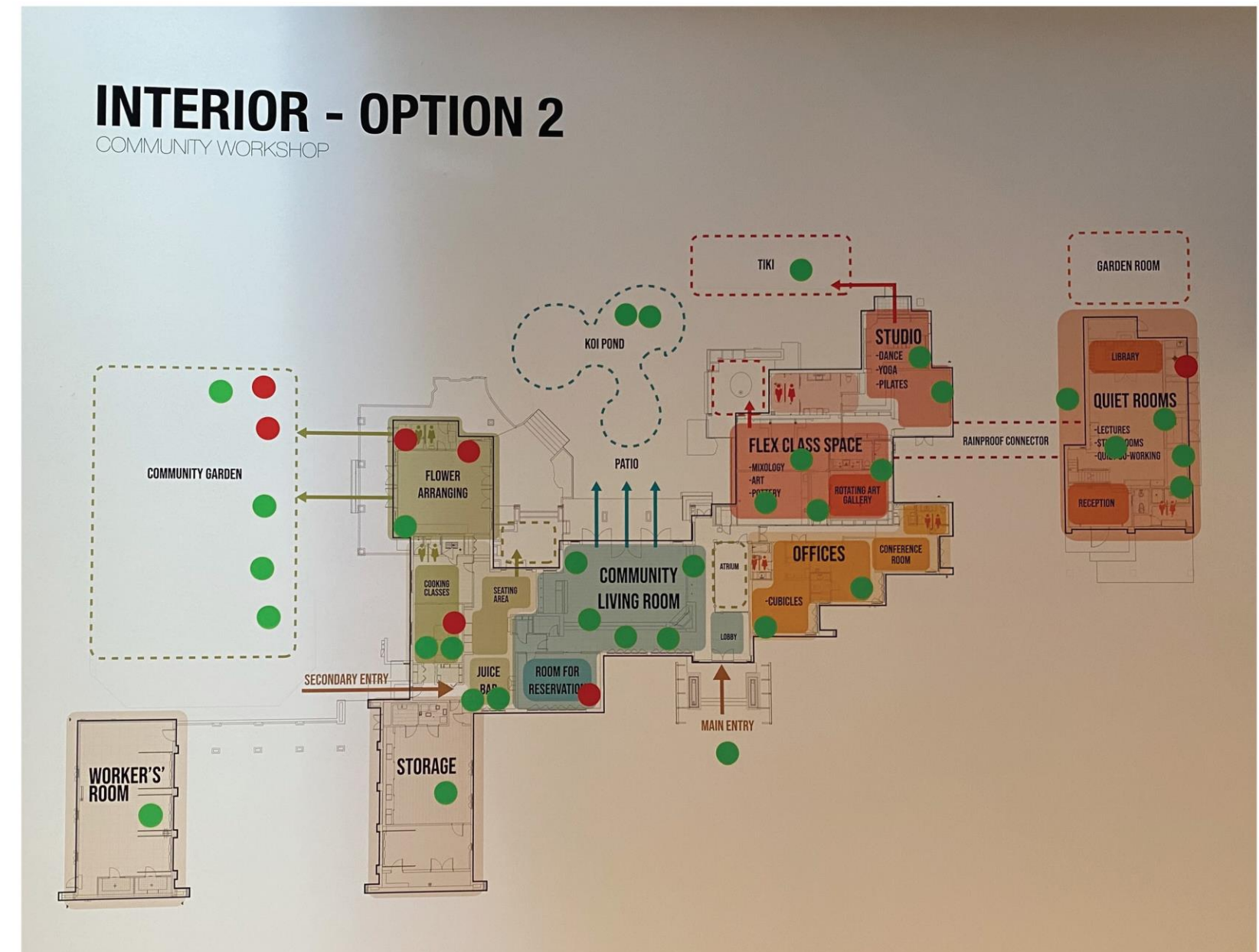
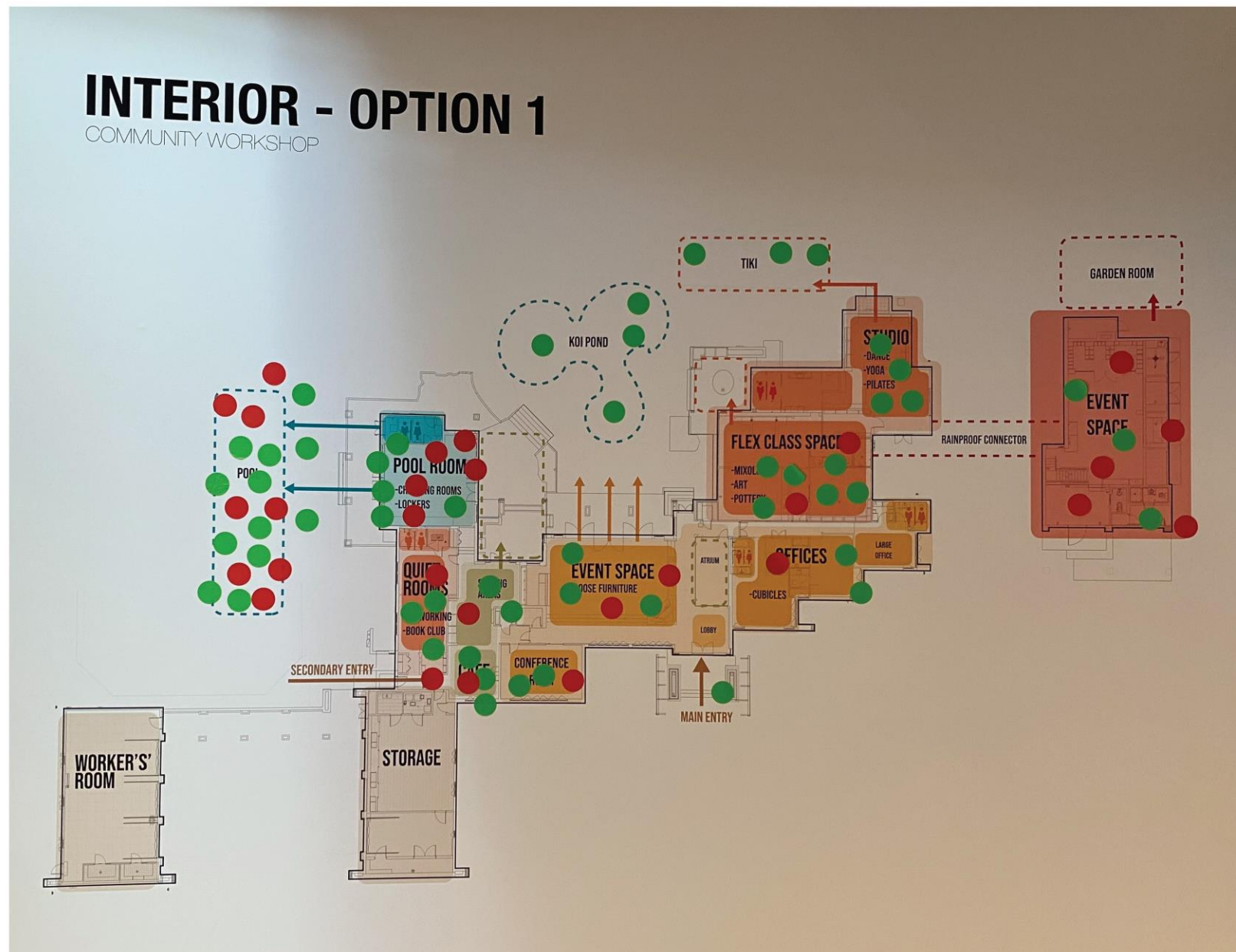
If there was an option to have food and drinks at Aleyda Mas Park, what type of establishment would best describe what you would like?



COMMUNITY WORKSHOP RESULTS



COMMUNITY WORKSHOP RESULTS

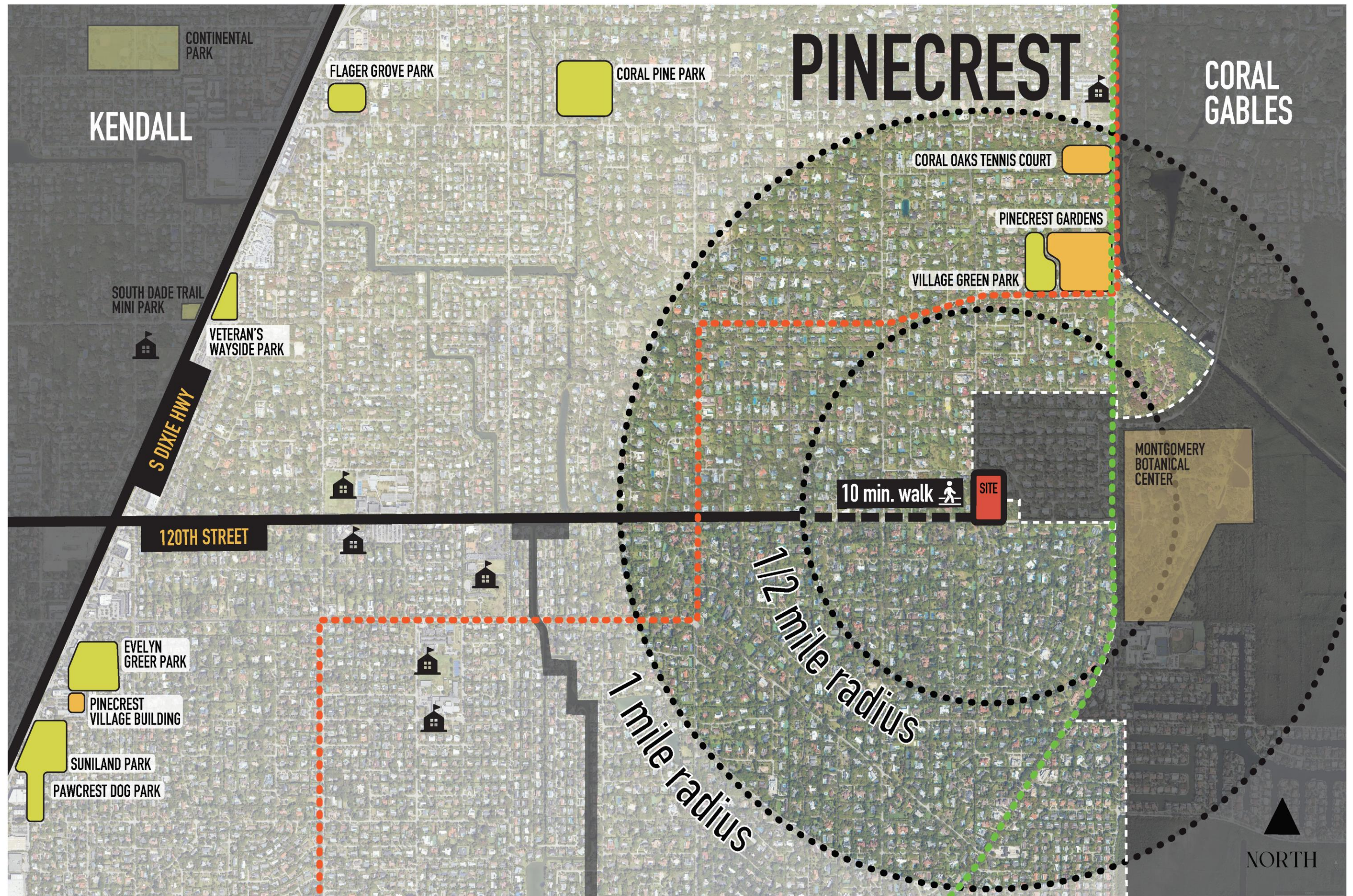


02

SITE INVENTORY & ANALYSIS

CONTEXT

-  SITE
-  COMMUNITY FACILITY
-  EXISTING PARK
-  BUS ROUTE
-  BICYCLE PATH
-  SCHOOL





EXISTING SITE PLAN

LEGAL DESCRIPTION			
FOLIO: 20-5012-008-0150			

ZONING DATA			
VILLAGE OF PINECREST			

ADDRESS:	11855 SW 60 AVE
YEAR BUILT:	1980

ZONING DATA	CRITERIA
ZONING DISTRICT	PR - PUBLIC AND PRIVATE PARKS AND RECREATION FACILITIES DISTRICT
HISTORIC DISTRICT	NONE
USES & OCCUPANCY CLASSIFICATION	PARK
	8940 MUNICIPAL : MUNICIPAL

SITE DATA	REQUIRED/ALLOWED	EXISTING	PROPOSED
TOTAL LOT AREA		217,800 SQ FT	N/A
TOTAL LOT AREA (ACRES)		5 ACRES GROSS	N/A
LOT WIDTH		400.005 FT	N/A
LOT DEPTH		544.5 FT	N/A
MAX. BUILDING COVERAGE	65,340 SQ FT (30%)	14,127 SQ FT	N/A
MAX. IMPERVIOUS SURFACE RATIO	141,570 SQ FT (65%)	59,243 SQ FT	N/A
MIN. GREEN SPACE	76,230 SQ FT (35%)	158,557 SQ FT	N/A
BUILDING DATA			
MAX. FLOOR AREA RATIO 1 STORY	0.40	N/A	N/A
MAX. FLOOR AREA RATIO 2 STORIES	0.51	N/A	N/A
BUILDING AREA		14,127 SQ FT	N/A
LIVING AREA		8,343 SQ FT	N/A
ADJUSTED AREA		11,084 SQ FT	N/A

SETBACKS:	REQUIRED/ALLOWED	EXISTING	PROPOSED
PRINCIPAL BUILDING			
FRONT (WEST)	25'-0"	COMPLY	N/A
SIDE (NORTH)	20'-0"	COMPLY	N/A
SIDE STREET (SOUTH)	30'-0"	COMPLY	N/A
REAR (EAST)	25'-0"	COMPLY	N/A
ACCESSORY BUILDING			
FRONT (WEST)	DISCRETIONARY	COMPLY	N/A
SIDE (NORTH)	20'-0"	NOT COMPLY	N/A
SIDE STREET (SOUTH)	30'-0"	COMPLY	N/A
REAR (EAST)	10'-0"	COMPLY	N/A </tr

BUILDING HEIGHT:	REQUIRED/ALLOWED	EXISTING	PROPOSED
ALLOWABLE:	35'-0" (2 STORIES)	COMPLY	N/A

LOCATED WITHIN A LOCAL HISTORIC DISTRICT?	NO		
DESIGNATED AS AN INDIVIDUAL HISTORIC SINGLE FAMILY SITE?	NO		
DETERMINED TO BE ARCHITECTURALLY SIGNIFICANT?	NO		

-  PROPERTY LINE
-  EXISTING SIDEWALK
-  BUILDING STRUCTURE
-  TREE CANOPIES
-  WATER FEATURES
-  PATHWAYS



03

RENDERED SITE PLANS

● MASTER PLAN OPTION 1



NORTH



● MASTER PLAN OPTION 2



NORTH





04 PROGRAM ELEMENTS

● ARRIVAL

PEDESTRIAN DROP-OFF

-Creates an **inviting and intuitive** threshold that welcomes pedestrians into the park.

-Provides **accessible**, gently sloped paths with smooth, non-slip surfaces for all users.

-Incorporates seating nodes, shade, and wayfinding to support **comfort and orientation**.

-Uses lighting, planting, and materials to define a **safe and legible** pedestrian approach.



● ARRIVAL

VEHICULAR DROP-OFF

- Establishes a strong first impression and sets a **welcoming** tone for all visitors.
- Ensures **safe and accessible** drop-off with clear, level surfaces and minimal transitions.
- Integrates seating, shade, and lighting to support **comfort** and visibility for seniors.
- Organizes **vehicular flow** to reduce conflicts and enhance pedestrian **safety** at entry.



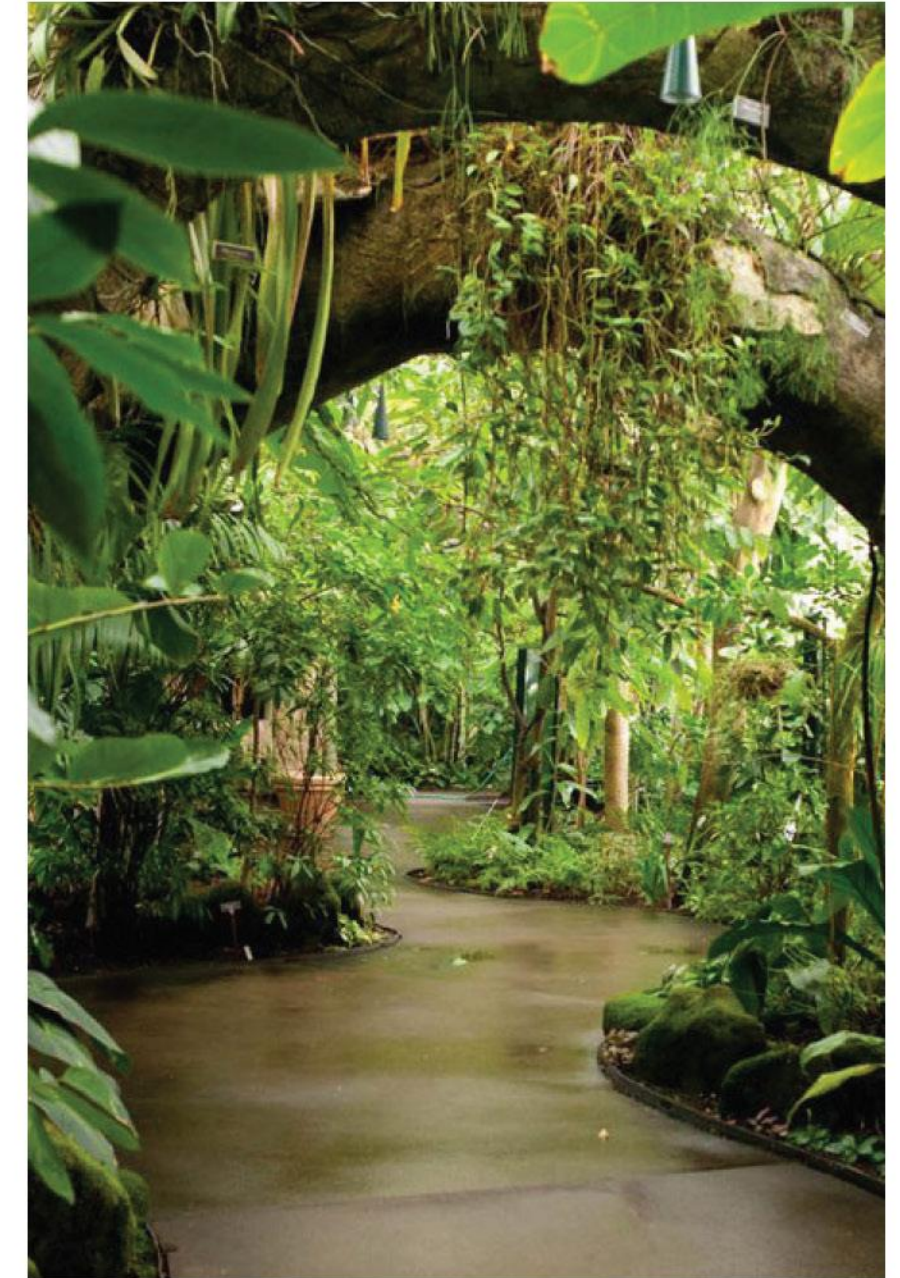


● FERN GULLY

-Suspends a lush **hanging garden** within the embrace of existing majestic live oaks, where ferns and epiphytes cascade like living tapestries.

-Unfolds a **dreamlike** atmosphere as gentle mists weave through the branches, evoking the magic of an early morning haze.

-Enriches the ecosystem, creating a **serene sanctuary** for native wildlife and an immersive retreat for visitors.



● FERN GULLY

-Suspends a lush **hanging garden** within the embrace of existing majestic live oaks, where ferns and epiphytes cascade like living tapestries.

-Unfolds a **dreamlike** atmosphere as gentle mists weave through the branches, evoking the magic of an early morning haze.

-Enriches the ecosystem, creating a **serene sanctuary** for native wildlife and an immersive retreat for visitors.



● WALKWAY TRELLIS / TUNNELS

-Creates **immersive** pathways that guide visitors through the space, enhancing both function and aesthetics.

-Designs to encourage exploration and discovery, offering visitors a sense of **journey** and transition through the space.

-Incorporates climbing plants or vines to naturally integrate greenery, providing **seasonal** variation and visual interest.



GAZEBOS

-Innovative, functional and aesthetic **shade solutions**, protecting visitors from the sun while enhancing the overall design.

-Incorporation of **versatile** canopy structures like gazebos, trellises, and pergolas, designed to meet a variety of site needs.



● FOLLY

-Innovative, functional and aesthetic **shade solution**, protecting visitors from the sun while enhancing the overall design.

-Incorporation of a **versatile** canopy structure - like gazebos, trellises, and pergolas, designed to meet a variety of site needs.



• INTERACTIVE ART

-Engages visitors through interactive art installations, such as a swing garden, **encouraging play** and participation.

-Fosters **creativity** and learning, offering dynamic experiences that evolve with user interaction and engagement.

-**Enhances** the site's identity, incorporating art that reflects the space's cultural, environmental, or thematic elements.



● SWING GARDEN

-Transforms spaces into **dynamic environments** where people of all ages can gather, interact, and engage with movement.

-Integrates swings with lush landscaping, artistic elements, and a **serene atmosphere** to promote relaxation and mindfulness.

-Enhances **site identity** by creating a visually striking and memorable destination that reflects the cultural and environmental character of the space.



TRAILS

-North & South **Loops**.

-Establishes clear circulation and **wayfinding** throughout site.

-ADA compliant pathways

-Encourages **physical activity** such as walking, jogging, or hiking while offering an immersive experience in the natural landscape and its nooks.





• NATURAL PLAY

- Informal play elements spark creativity, **exploration**, and active fun for kids in the park.

- Natural features like logs, boulders, and open spaces encourage **imaginative**, unstructured play.



● SEATING

- Thoughtfully designed seating layouts offer a balance between open spaces and intimate **nooks** for privacy and contemplation.
- Variety of seating options encourage rest and **social interaction**.
- Strategically placed seating areas offer opportunities for users to enjoy views, people-watch, or **relax** in shaded areas.



• LABYRINTH / COMMUNITY GARDEN

-Fosters community engagement by offering shared spaces to grow plants, herbs, and flowers, promoting collaboration and connection.

-Creates a peaceful and contemplative environment with a labyrinth design that encourages play, reflection, mindfulness, and personal growth.





● ORCHID PILLAR GARDEN

- Repurposes **existing** pillars to create a vibrant orchid display, adding visual and spatial depth.

- Maximizes vertical space, highlighting a variety of orchid species.

- Enhances biodiversity, **enriching** the site's ecological value.





● ENTRY GATE

-**Welcoming** focal point that marks the entrance and sets the tone for the visitor experience.

-Integrates with site design using complementary materials and clear signage for ease of **navigation**.

-Ensures **security** and accessibility with secure entry systems and ADA-compliant access points.



• LAP POOL

- Encourages **physical fitness** and promotes cardiovascular health.
- Offers a serene space for personal reflection and exercise.



● KOI POND

-Acts as a centerpiece of **tranquility**, encouraging mindfulness and **meditation**.

-It attracts local **wildlife**, creating opportunities for quiet observation and fostering a deeper connection to nature.





• OUTDOOR DINING

- Fosters community **gathering** with casual outdoor dining spaces that encourage social interaction in a relaxed, natural setting.
- Offers flexible seating options, including picnic tables and benches, to accommodate families, friends, and **local** groups.
- Creates a welcoming atmosphere, integrating nature and local character to provide an enjoyable dining **experience** for all park visitors.



• MEDITATION GARDEN

A **peaceful space** for creativity fosters community engagement through workshops and sustainable gardening practices.



LAGOON PLAZA & BRIDGE

-Provides a **picturesque** gathering spot that invites people to pause, reflect, or engage in conversations.

-The **calming** water views and shaded seating enhance community interaction while offering a peaceful escape from the hustle of daily life.



▲
NORTH





TIKI HUT

-A **flexible outdoor venue** ideal for yoga classes, small events, or cultural gatherings.

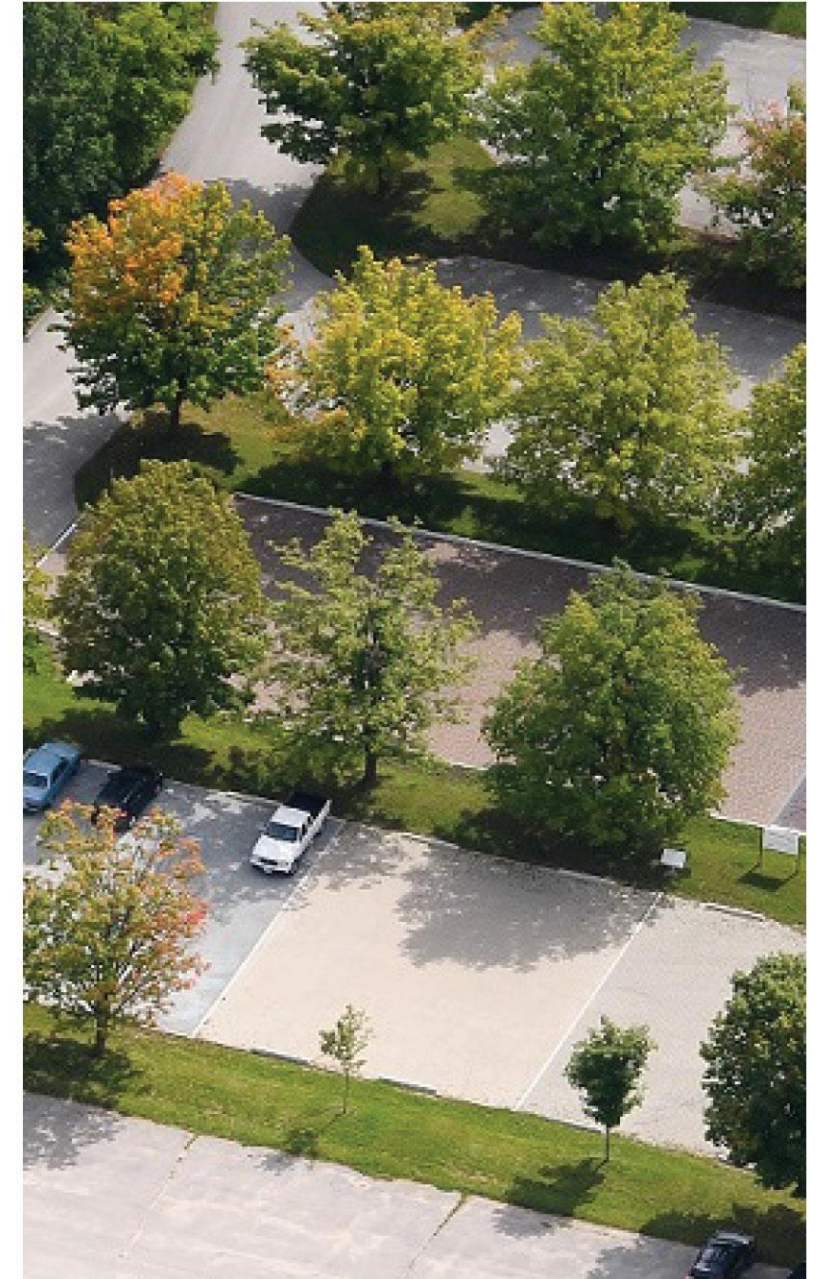
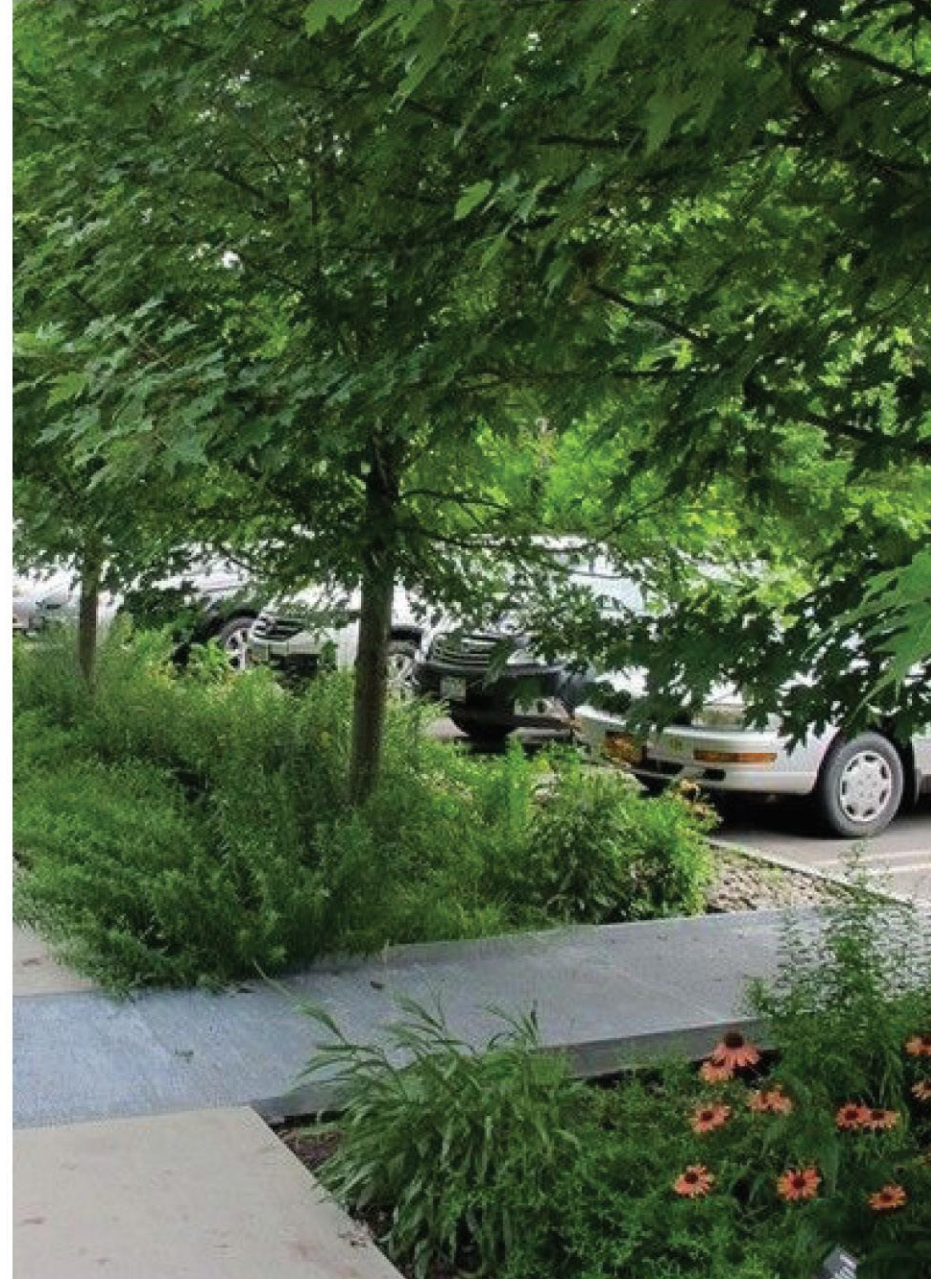




● PARKING

- **Shaded** areas reduce the urban heat island effect, keeping the space cooler and more comfortable for visitors.

- **Permeable** paving help manage stormwater naturally, reducing runoff and supporting groundwater recharge.



05

SITE PLANS



MASTER PLAN

OPTION 1

SITE STATS

- 2 = ADA PARKING SPACE
- 2 = EV PARKING SPACE
- 16 = BIKE PARKING SPACES
- 56 = TOTAL PARKING STALLS
- 990 LF = SOUTH LOOP
- 1,100 LF = NORTH LOOP

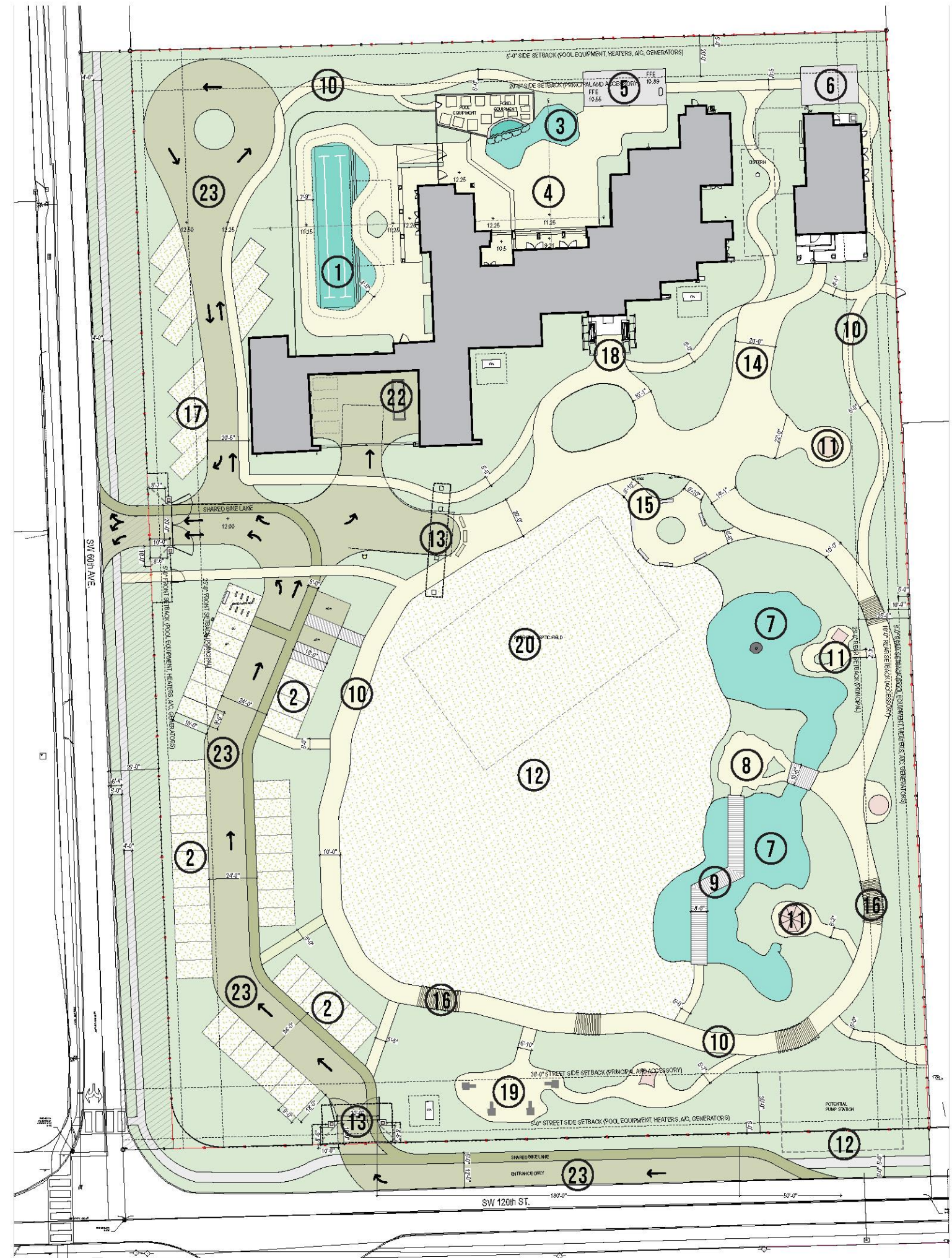
KEY FEATURES

- ① LAP POOL W/SUN DECKS
- ② PARKING LOTS
- ③ NEW KOI POND
- ④ EXPANDED OUTDOOR PAVILION
- ⑤ TIKI STRUCTURE & YOGA DECK
- ⑥ NURSERY GROW HOUSE
- ⑦ REFURBISHED LAGOON
- ⑧ LAGOON PERFORMANCE PATIO
- ⑨ LAGOON BOARDWALK
- ⑩ NORTH & SOUTH TRAIL LOOPS
- ⑪ GARDEN FOLLY OR GAZEBO
- ⑫ GREAT LAWN
- ⑬ ENTRY GATE W/ TRELLIS
- ⑭ FIRE TRUCK PARKING
- ⑮ DROP-OFF & FERN GULLY
- ⑯ GARDEN TUNNEL
- ⑰ STAFF PARKING / TWO-WAY DIAGONAL
- ⑱ COMMUNITY BUILDING MAIN ENTRANCE
- ⑲ ORCHID PILLAR GARDEN
- ⑳ POTENTIAL SEPTIC FIELD
- ㉑ POTENTIAL PUMP STATION
- ㉒ DUMPSTER
- ㉓ DRIVEWAYS



NORTH

NOTE: TREE REMOVAL AND TREE RELOCATION PLAN WILL BE PROVIDED AFTER THE PRELIMINARY SITE LAYOUT IS APPROVED. PROPOSED PLANTING PLANS WITH MITIGATION CALCULATIONS WILL ALSO BE COMPLETED AT THAT TIME.



MASTER PLAN

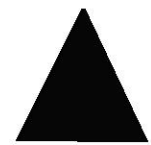
OPTION 2

SITE STATS

- 2 = ADA PARKING SPACE
- 2 = EV PARKING SPACE
- 30 = BIKE PARKING SPACES
- 56 = TOTAL PARKING STALLS
- 990 LF = SOUTH LOOP
- 1,100 LF = NORTH LOOP

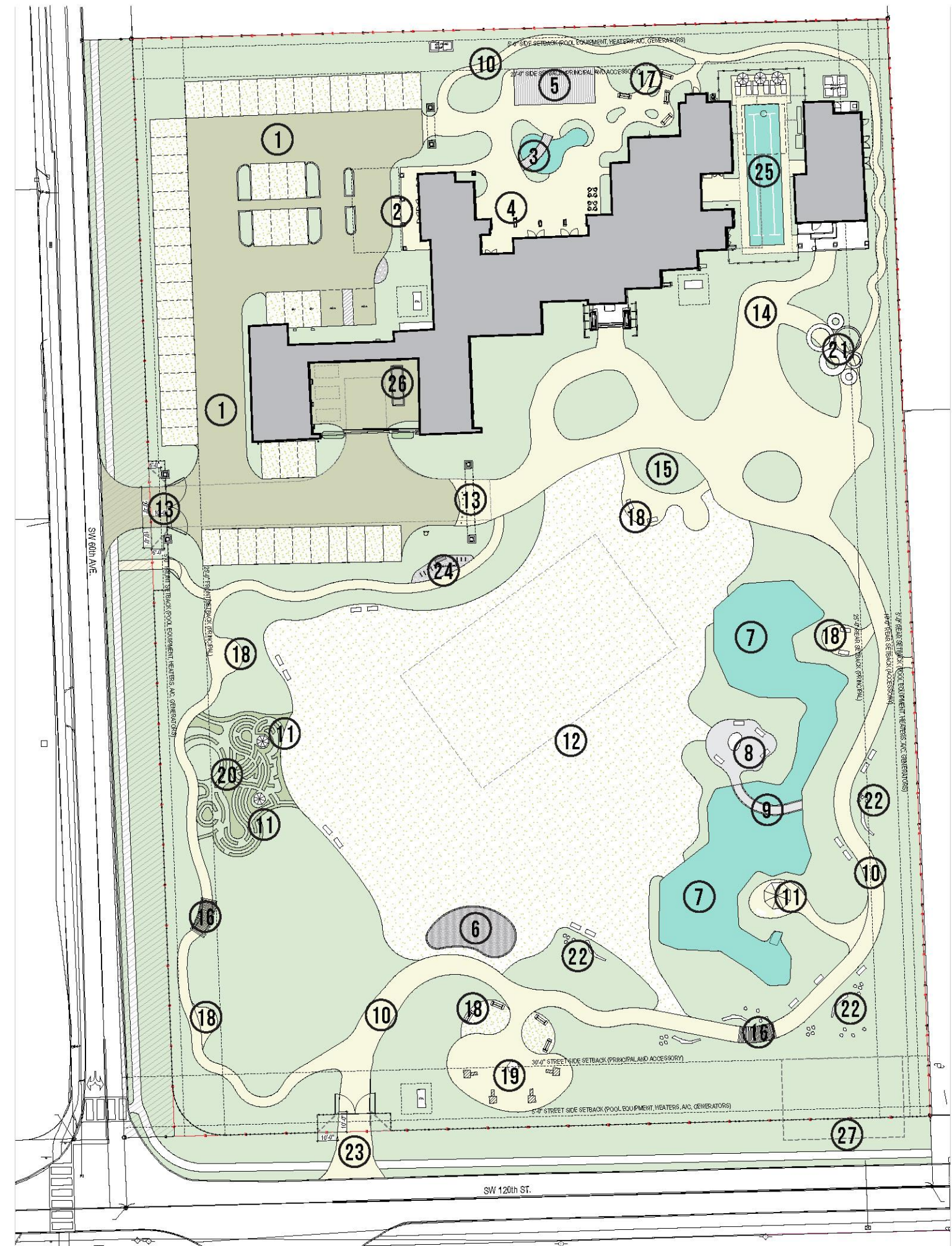
KEY FEATURES

- ① HIDDEN PARKING LOT
- ② BUILDING MAIN ENTRANCE & DROP OFF
- ③ NEW KOI POND
- ④ EXPANDED OUTDOOR PAVILION
- ⑤ TIKI STRUCTURE & YOGA DECK
- ⑥ GARDEN FOLLY
- ⑦ REFURBISHED LAGOON
- ⑧ LAGOON PERFORMANCE PATIO
- ⑨ LAGOON BOARDWALK
- ⑩ NORTH & SOUTH TRAIL LOOPS
- ⑪ GAZEBOS
- ⑫ GREAT LAWN
- ⑬ ENTRY TRELLISES
- ⑭ FIRE TRUCK PARKING
- ⑮ DROP-OFF & FERN GULLY
- ⑯ GARDEN TUNNELS
- ⑰ SWING GARDEN
- ⑱ SEATING NOOK
- ⑲ ORCHID PILLAR GARDEN
- ⑳ LABYRINTH GARDEN
- ㉑ INTERACTIVE ART
- ㉒ NATURAL PLAY AREAS
- ㉓ PEDESTRIAN / MAINTENANCE ENTRY
- ㉔ BIKE PARKING
- ㉕ LAP POOL
- ㉖ DUMPSTER
- ㉗ POTENTIAL PUMP STATION



NORTH

NOTE: TREE REMOVAL AND TREE RELOCATION PLAN WILL BE PROVIDED AFTER THE PRELIMINARY SITE LAYOUT IS APPROVED. PROPOSED PLANTING PLANS WITH MITIGATION CALCULATIONS WILL ALSO BE COMPLETED AT THAT TIME.



06

INTERIOR PLANS

INTERIOR PLAN

OPTION 1

STATS

COMMUNITY CENTER :

8,833 SQ FT

OFFICE :

1,225 SQ FT



● INTERIOR PLAN

OPTION 2

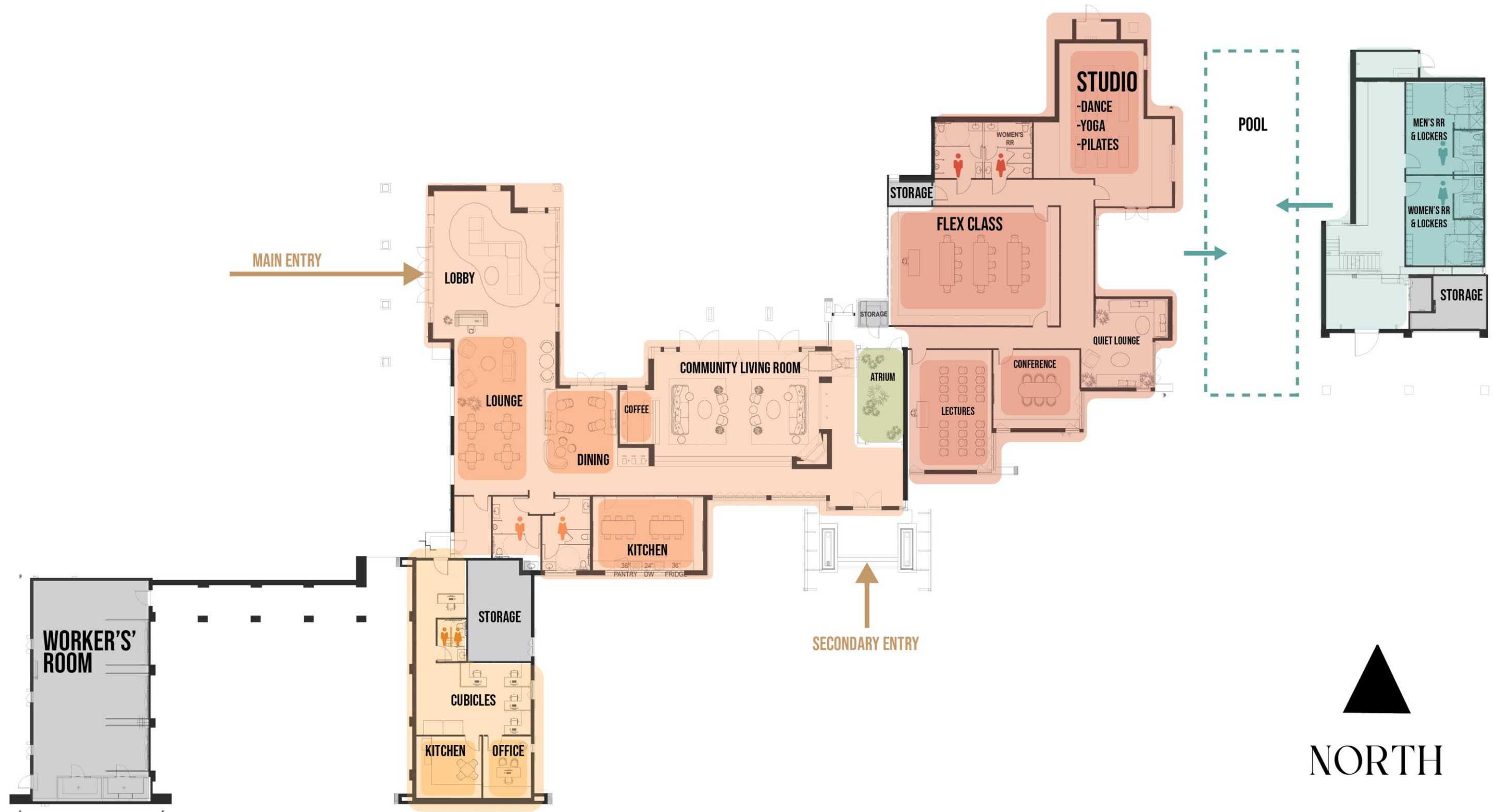
STATS

COMMUNITY CENTER :

9,565 SQ FT

OFFICE :

1,019 SQ FT



07

HARDSCAPE PALETTE



• VEHICULAR

DRIVEWAYS & PARKING SPOTS

- **Permeable Pavers**
- **Gravel Pavers**
- Rock Salt Concrete
- Pigmented Concrete
- Concrete Pavers
- Cobblestone



• VEHICULAR

DRIVEWAYS & PARKING SPOTS

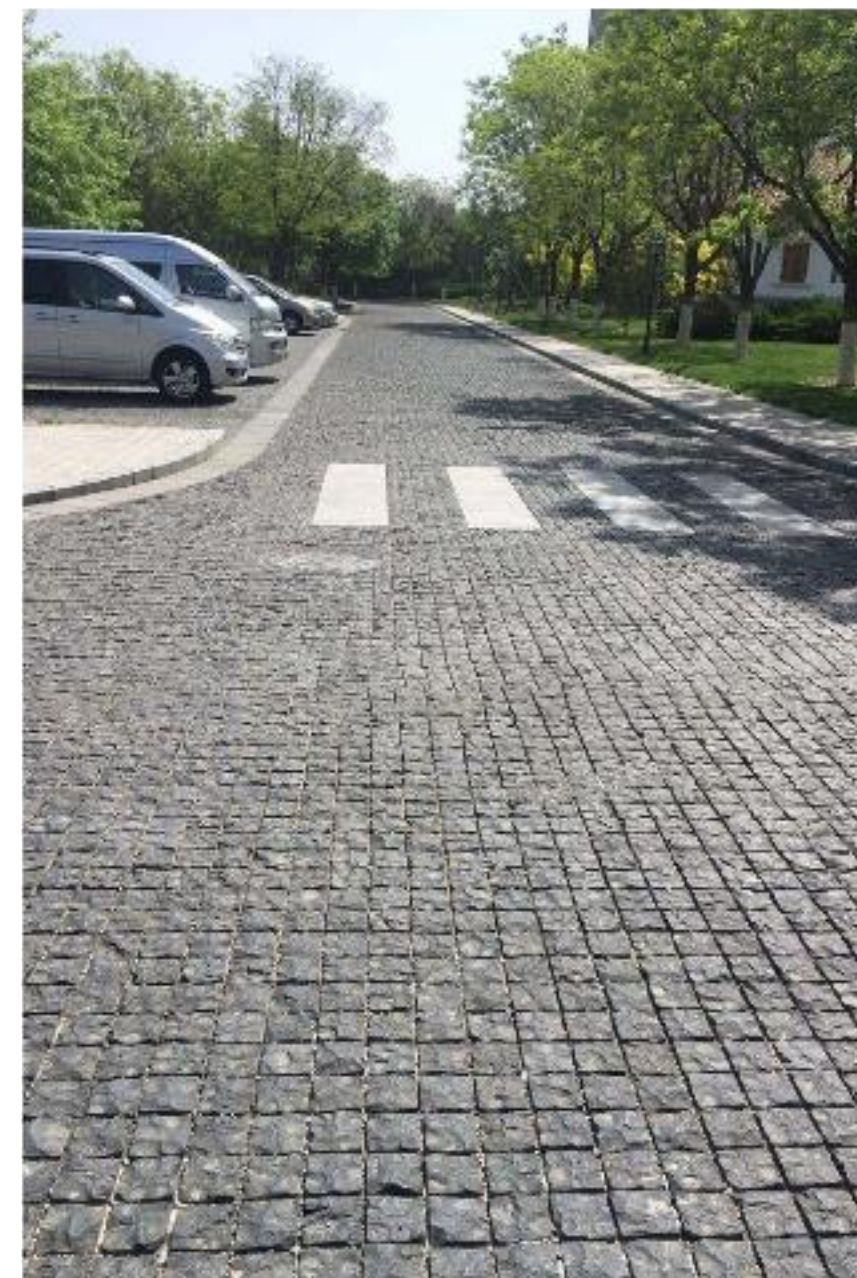
- **Permeable Pavers**
- Gravel Pavers
- Rock Salt Concrete
- Pigmented Concrete
- Concrete Pavers
- Cobblestone



• VEHICULAR

DRIVEWAYS & PARKING SPOTS

- Permeable Pavers
- Grass / Gravel Pavers
- Rock Salt Concrete
- Pigmented Concrete**
- Concrete Pavers
- Cobblestone**



● PEDESTRIAN

ADA PATHS & TRAILS

- Concrete Stencil / Pattern
- Imprinted Concrete**
- Pigmented Concrete
- Rock Salt Concrete**
- Concrete Pavers
- Stone Pavers
- Playful Ideas
- Illuminated Pavement



● PEDESTRIAN

ADA PATHS & TRAILS

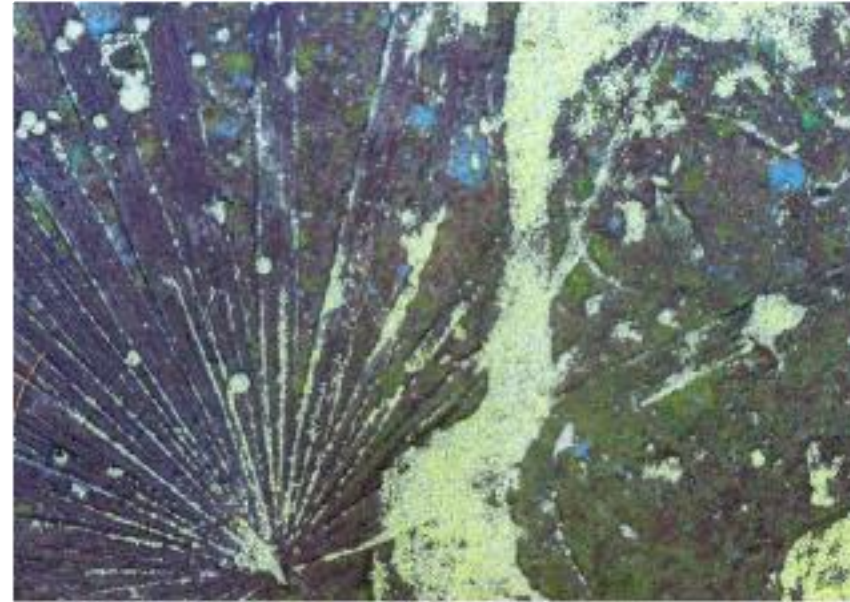
- Concrete Stencil / Pattern
- Imprinted Concrete
- Pigmented Concrete
- Rock Salt Concrete
- Concrete Pavers**
- Stone Pavers
- Playful Ideas



● PEDESTRIAN

ADA PATHS & TRAILS

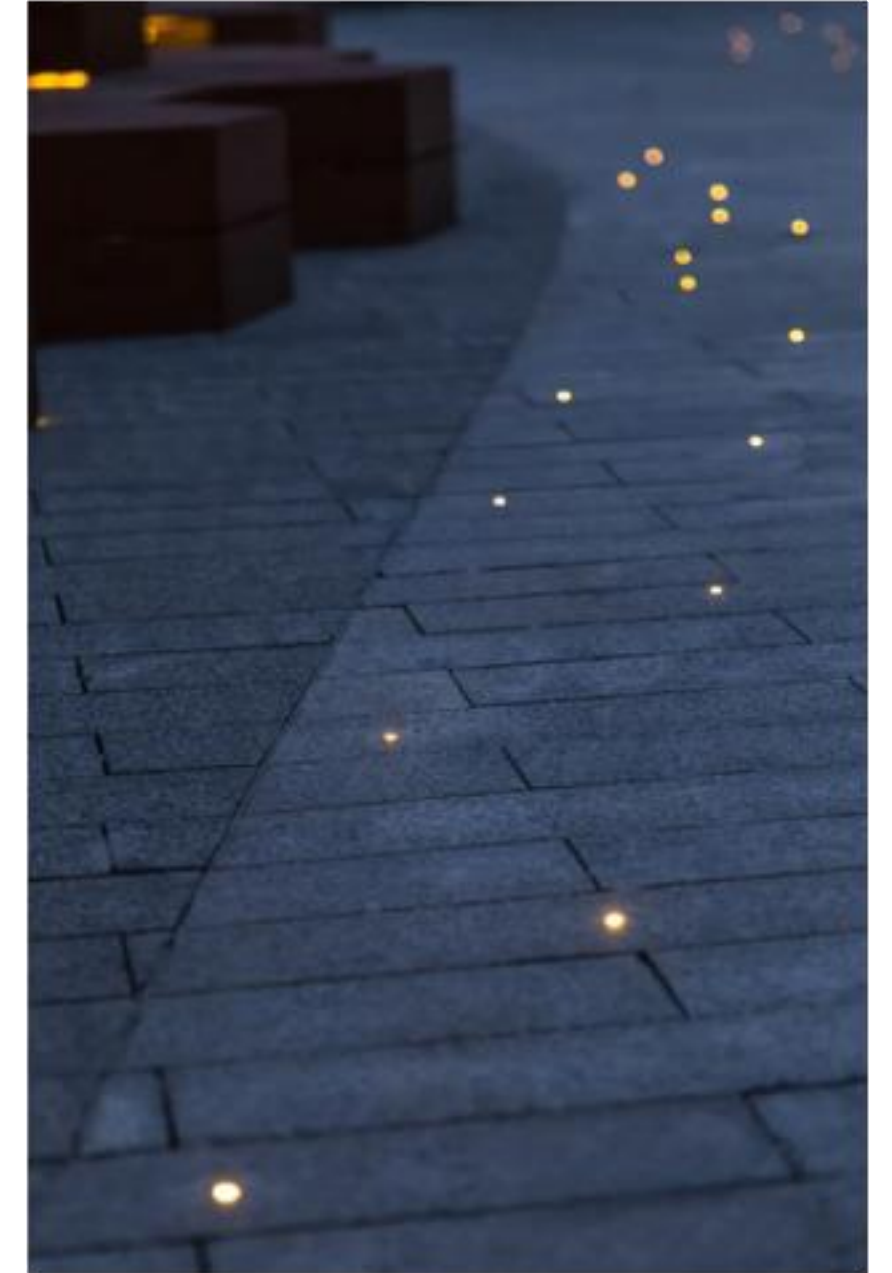
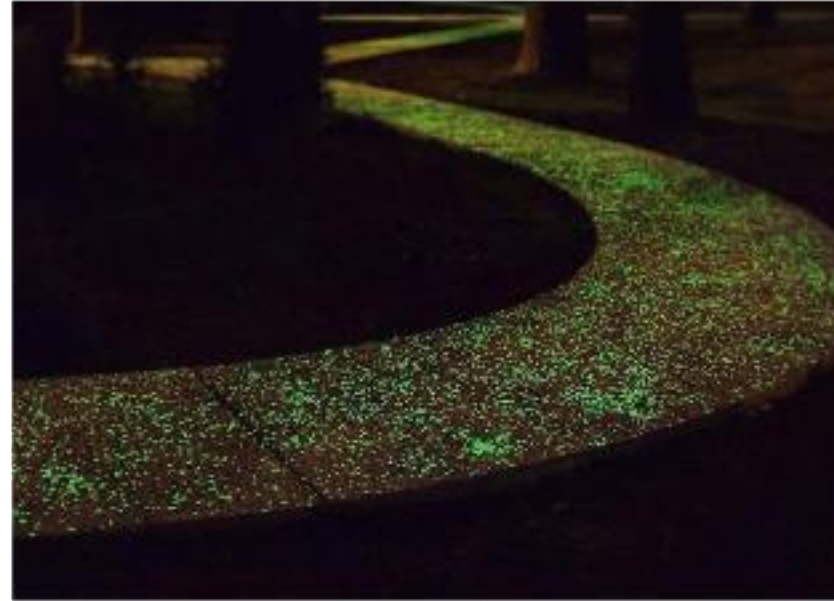
- Concrete Stencil / Pattern
- Imprinted Concrete
- Pigmented Concrete**
- Rock Salt Concrete
- Concrete Pavers
- Stone Pavers-Playful Ideas



● PEDESTRIAN

ADA PATHS & TRAILS

- Concrete Stencil / Pattern
- Imprinted Concrete
- Pigmented Concrete
- Rock Salt Concrete
- Concrete Pavers
- Stone Pavers
- Playful Ideas
- Illuminated Pavement**



08

LANDSCAPE
LIGHTING

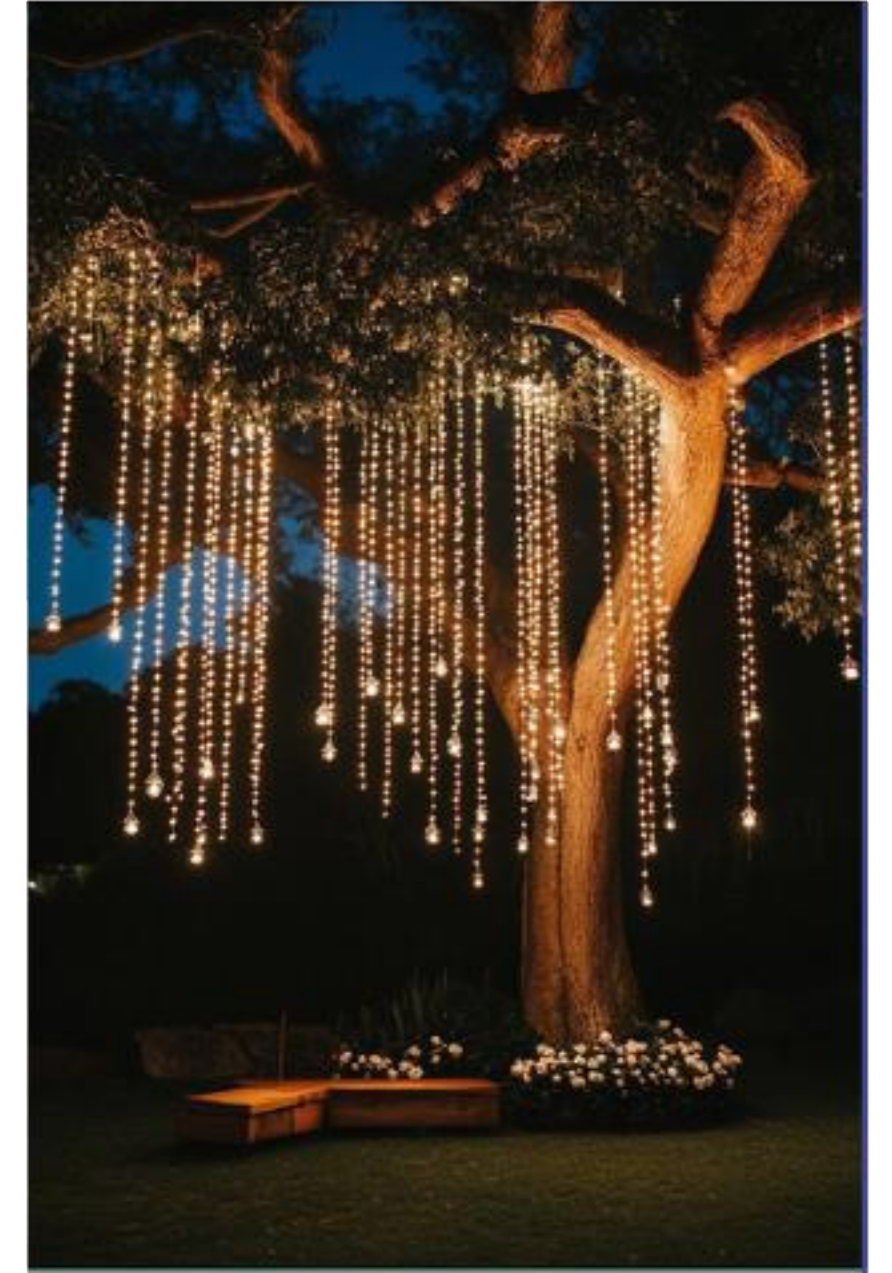
LANDSCAPE LIGHTING

-Enhances visual interest and **extends usability** of outdoor spaces into the evening.

-**Highlights** architectural elements, plant textures, and key circulation paths.

-Adds depth, contrast, and a **sense of drama** to the landscape.

-Defines **spatial hierarchy** and reinforces the overall design narrative.



09

PLANTING
PALETTE



- NATIVE GROUPINGS



• NATIVE WILDFLOWERS



• AQUATIC & SHORELINE



10

SUMMARY

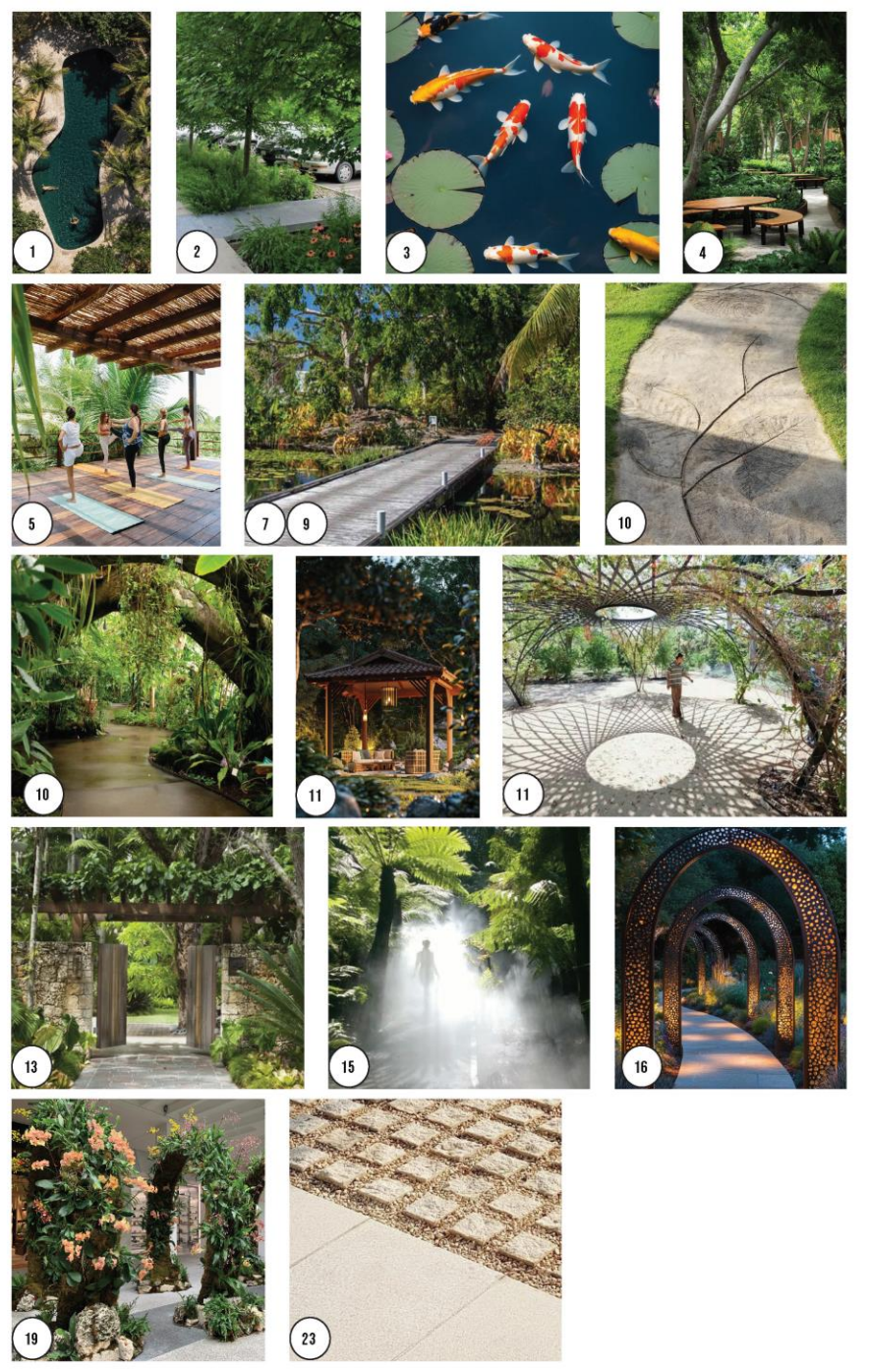


M
L
K
J
I
H
G
F
E
D
C
B
A

EXTERIOR OPTION 1

KEY FEATURES

- 1 LAP POOL W/SUN DECKS
- 2 PARKING LOTS
- 3 NEW KOI POND
- 4 EXPANDED OUTDOOR PAVILION
- 5 TIKI STRUCTURE & YOGA DECK
- 6 NURSERY GROW HOUSE
- 7 REFURBISHED LAGOON
- 8 LAGOON PERFORMANCE PATIO
- 9 LAGOON BOARDWALK
- 10 NORTH & SOUTH TRAIL LOOPS
- 11 GARDEN FOLLY OR GAZEBO
- 12 GREAT LAWN
- 13 ENTRY GATE W/ TRELLIS
- 14 FIRE TRUCK PARKING
- 15 DROP-OFF & FERN GULLY
- 16 GARDEN TUNNEL
- 17 STAFF PARKING / TWO-WAY DIAGONAL
- 18 COMMUNITY BUILDING MAIN ENTRANCE
- 19 ORCHID PILLAR GARDEN
- 20 POTENTIAL SEPTIC FIELD
- 21 POTENTIAL PUMP STATION
- 22 DUMPSTER
- 23 DRIVEWAYS



NOTE: TREE REMOVAL AND TREE RELOCATION PLAN WILL BE PROVIDED AFTER THE PRELIMINARY SITE LAYOUT IS APPROVED. PROPOSED PLANTING PLANS WITH MITIGATION CALCULATIONS WILL ALSO BE COMPLETED AT THAT TIME.



1 SITE HARDSCAPE PLAN
SCALE: 1/32" = 1'-0"

ARCHITECT
LANDSCAPE ARCHITECT

URBAN ROBOT LLC
420 LINCOLN ROAD, S. 600
MIAMI BEACH, FL 33139
T. 786.246.4857
AR 95912 LA 6667391

ALEYDA MAS PARK

11855 SW 60th AVE
Pinecrest, FL 33156

WRITTEN DIMENSIONS ON THIS DRAWING SHALL HAVE PRECEDENCE OVER SCALED DIMENSIONS. CONTRACTOR SHALL VERIFY AND BE RESPONSIBLE FOR ALL DIMENSIONS AND CONDITIONS ON THE JOB AND THIS OFFICE MUST BE NOTIFIED OF ANY VARIATION FROM THE DIMENSIONS.

SEAL

URBANROBOT LLC
REGISTERED PROFESSIONAL LANDSCAPE ARCHITECT
LICENSE NO. LC2000010

ID	DATE	DESCRIPTION

2434
PROJECT

4/7/25

DS, AJ / JV
DRAWN / CHECKED

SITE HARDSCAPE PLAN

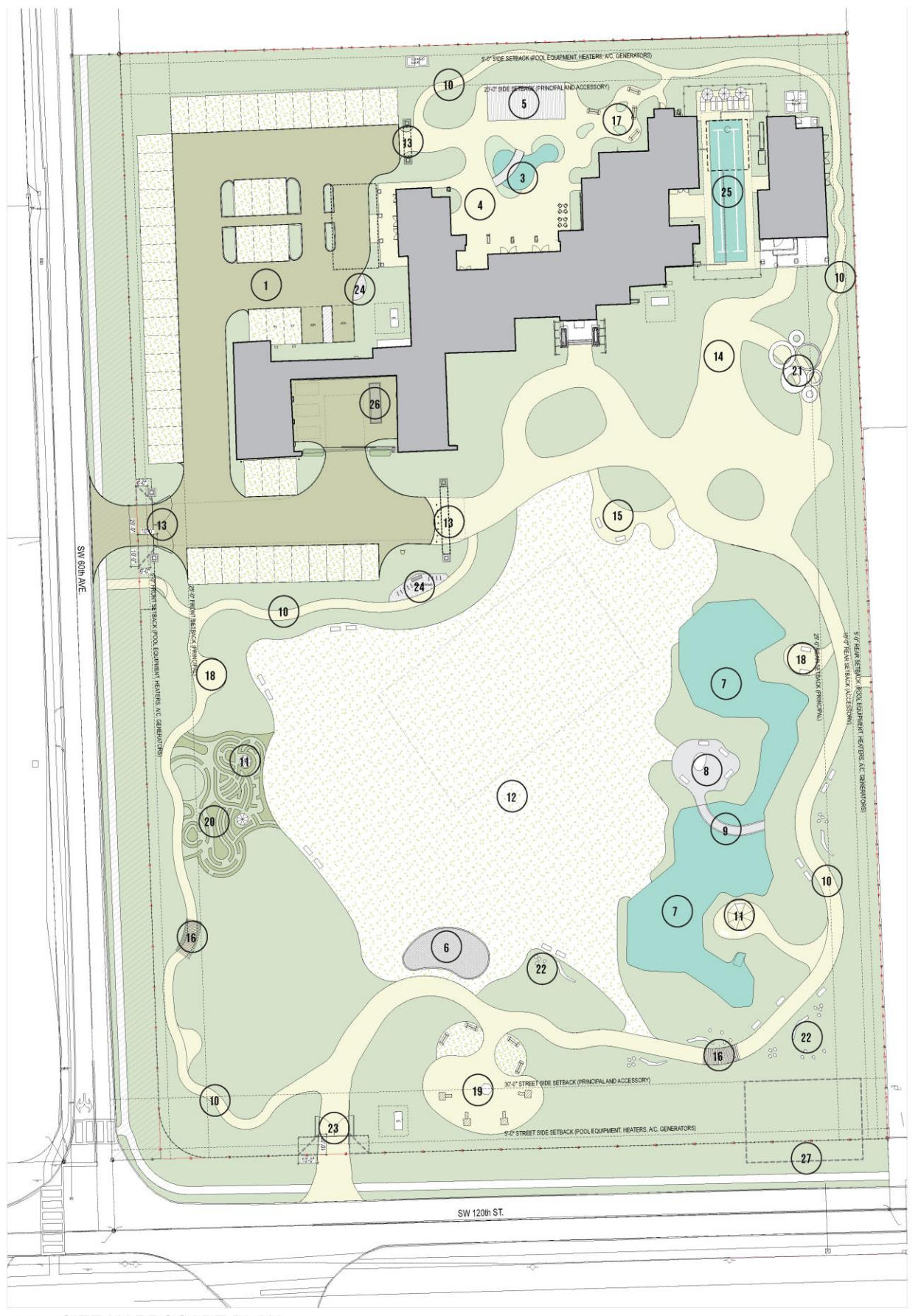
M
L
K
J
I
H
G
F
E
D
C
B
A

EXTERIOR OPTION 2

- KEY FEATURES**
- 1 HIDDEN PARKING LOT
 - 2 BUILDING MAIN ENTRANCE & DROP OFF
 - 3 NEW KOI POND
 - 4 EXPANDED OUTDOOR PAVILION
 - 5 TIKI STRUCTURE & YOGA DECK
 - 6 GARDEN FOLLY
 - 7 REFURBISHED LAGOON
 - 8 LAGOON PERFORMANCE PATIO
 - 9 LAGOON BOARDWALK
 - 10 NORTH & SOUTH TRAIL LOOPS
 - 11 GAZEBOS
 - 12 GREAT LAWN
 - 13 ENTRY TRELLISES
 - 14 FIRE TRUCK PARKING
 - 15 DROP-OFF & FERN GULLY
 - 16 GARDEN TUNNELS
 - 17 SWING GARDEN
 - 18 SEATING NOOK
 - 19 ORCHID PILLAR GARDEN
 - 20 LABYRINTH GARDEN
 - 21 INTERACTIVE ART
 - 22 NATURAL PLAY AREAS
 - 23 PEDESTRIAN / MAINTENANCE ENTRY
 - 24 BIKE PARKING
 - 25 LAP POOL
 - 26 DUMPSTER
 - 27 POTENTIAL PUMP STATION



NOTE: TREE REMOVAL AND TREE RELOCATION PLAN WILL BE PROVIDED AFTER THE PRELIMINARY SITE LAYOUT IS APPROVED. PROPOSED PLANTING PLANS WITH MITIGATION CALCULATIONS WILL ALSO BE COMPLETED AT THAT TIME.



1 SITE HARDSCAPE PLAN
SCALE: 1/32" = 1'-0"

ARCHITECT
LANDSCAPE ARCHITECT

URBAN ROBOT LLC
420 LINCOLN ROAD, S. 600
MIAMI BEACH, FL 33139
T. 786.246.4857
AR 95912 LA 6667391

ALEYDA MAS PARK

11855 SW 60th AVE
Pinecrest, FL 33156

WRITTEN DIMENSIONS ON THIS DRAWING SHALL HAVE PRECEDENCE OVER SCALED DIMENSIONS. CONTRACTOR SHALL VERIFY AND BE RESPONSIBLE FOR ALL DIMENSIONS AND CONDITIONS ON THE JOB AND THIS OFFICE MUST BE NOTIFIED OF ANY VARIATION FROM THE DIMENSIONS.

SEAL

URBANROBOT LLC
ARCH00017610 03/20/15M LCR000010

REVISIONS

ID	DATE	DESCRIPTION

2434
PROJECT

4/7/25

DS, AJ / JV
DRAWN / CHECKED

SITE HARDSCAPE PLAN



THANK YOU



Parks and Recreation Department

MEMORANDUM

DATE: May 2, 2025

TO: Yocelyn Galiano, ICMA-CM, Village Manager

FROM: Robert C. Mattes, CPRE, CPSI, Parks and Recreation Director

RE: Aleyda Mas Park Master Plan and Conceptual Design

Over the past nine months, the Parks and Recreation Department has collaborated closely with Urban Robot Associates to develop a comprehensive master plan and conceptual design for Aleyda Mas Park. This process has been driven by an inclusive and transparent approach, beginning with a series of community and stakeholder meetings and a robust community survey that received input from nearly one thousand participants, with 88% of those participants being residents of Pinecrest. A public meeting was held to review the survey results and gather additional feedback. Throughout the planning process, our team coordinated with multiple permitting agencies to ensure design feasibility and conducted numerous internal reviews to refine the concepts.

The final product reflects the collective input of residents, stakeholders, and technical experts, and it outlines two thoughtful conceptual design options for the park. You will notice that both designs include a small lap pool feature. This element was intentionally included as a visual placeholder to allow for proper evaluation within the design context. Should the pool not be included in the final plan, it can be removed without impacting the integrity of either concept. In that case, the corresponding locker room areas would be converted into flexible program space, allowing for other community-driven uses.

The department is proud of the results and excited to share these concepts with Council. We welcome your input on the proposed features and layout options. Following Council's direction on the final design elements, Urban Robot Associates will proceed with Phase II of the project and begin developing the construction documents. We appreciate your continued support and look forward to bringing this transformative community space to life.